

## **Appendix L**

### Environmental Justice Screening Tool

*This Page Intentionally Blank*



# ***Environmental Justice Report***

---

*66 MW Solway Solar project*



*This Page Intentionally Blank*

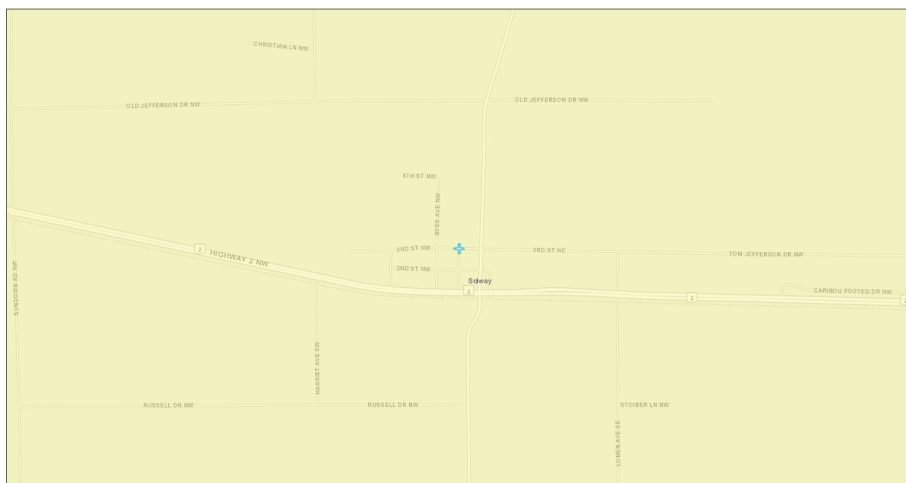
**This report provides environmental and socioeconomic information for user-defined areas, and combines that data into environmental justice and supplemental indexes.**

# Solway, MN

### 5 miles Ring Centered at 47.521200,-95.130744

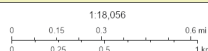
**Population: 1,425**

**Area in square miles: 78.53**



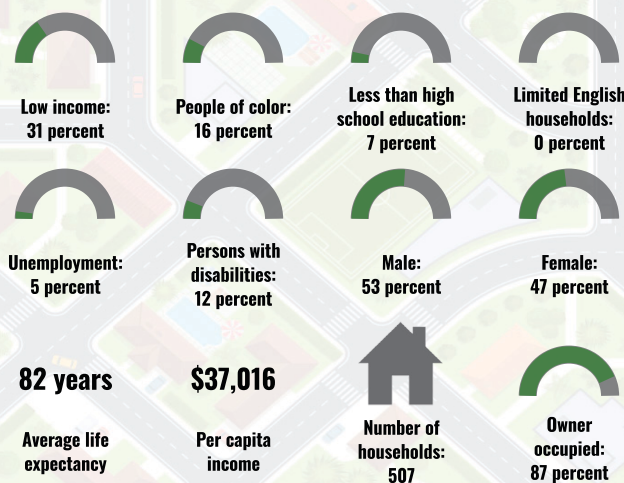
August 9, 2024

✦ Solway MN Buffer

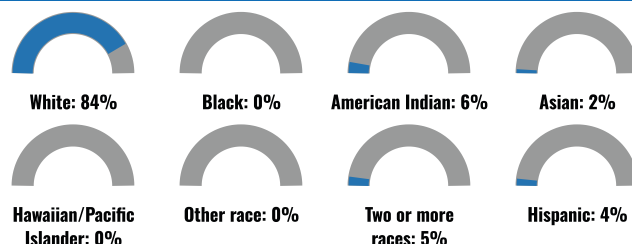


Esri, HERE, Esri, HERE, Garmin, GeoTechnologies, Inc.,  
USGS, EPA

## COMMUNITY INFORMATION



## BREAKDOWN BY RACE



## BREAKDOWN BY AGE



## LIMITED ENGLISH SPEAKING BREAKDOWN



## LANGUAGES SPOKEN AT HOME

LANGUAGE	PERCENT
English	99%
German or other West Germanic	1%
Total Non-English	1%

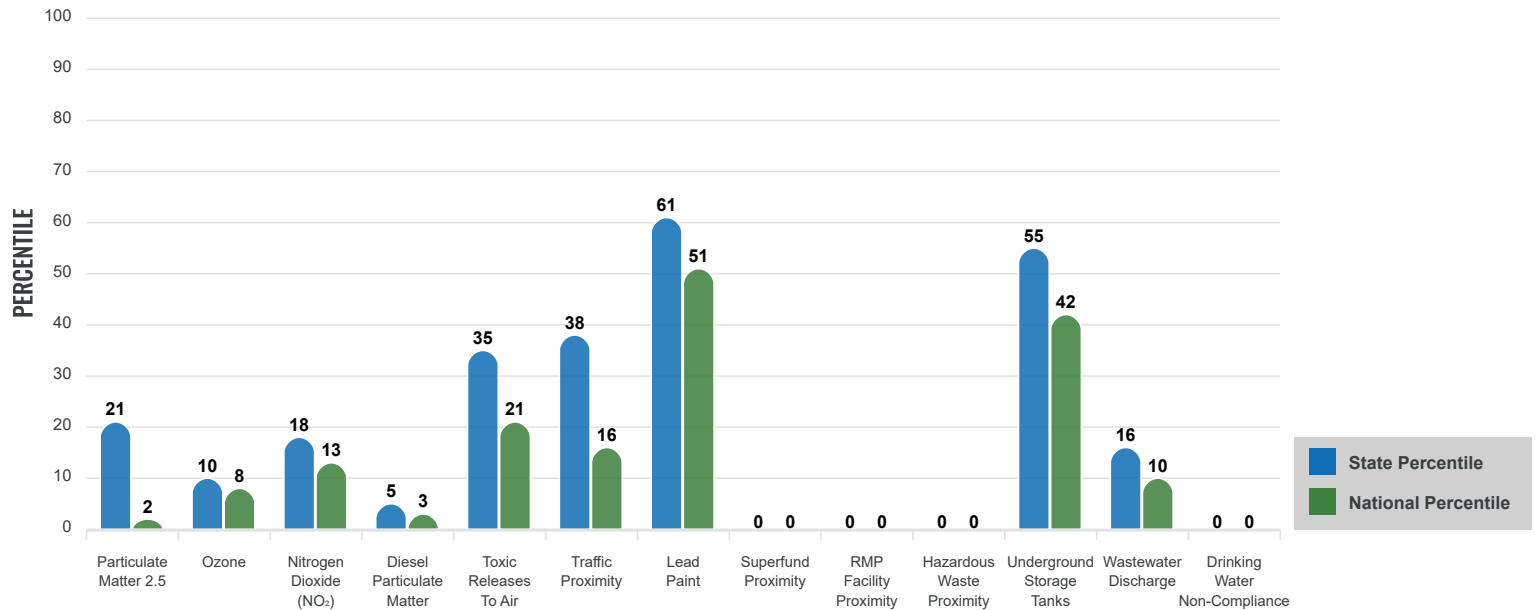
# Environmental Justice & Supplemental Indexes

The environmental justice and supplemental indexes are a combination of environmental and socioeconomic information. There are thirteen EJ indexes and supplemental indexes in EJScreen reflecting the 13 environmental indicators. The indexes for a selected area are compared to those for all other locations in the state or nation. For more information and calculation details on the EJ and supplemental indexes, please visit the [EJScreen website](#).

## EJ INDEXES

The EJ indexes help users screen for potential EJ concerns. To do this, the EJ index combines data on low income and people of color populations with a single environmental indicator.

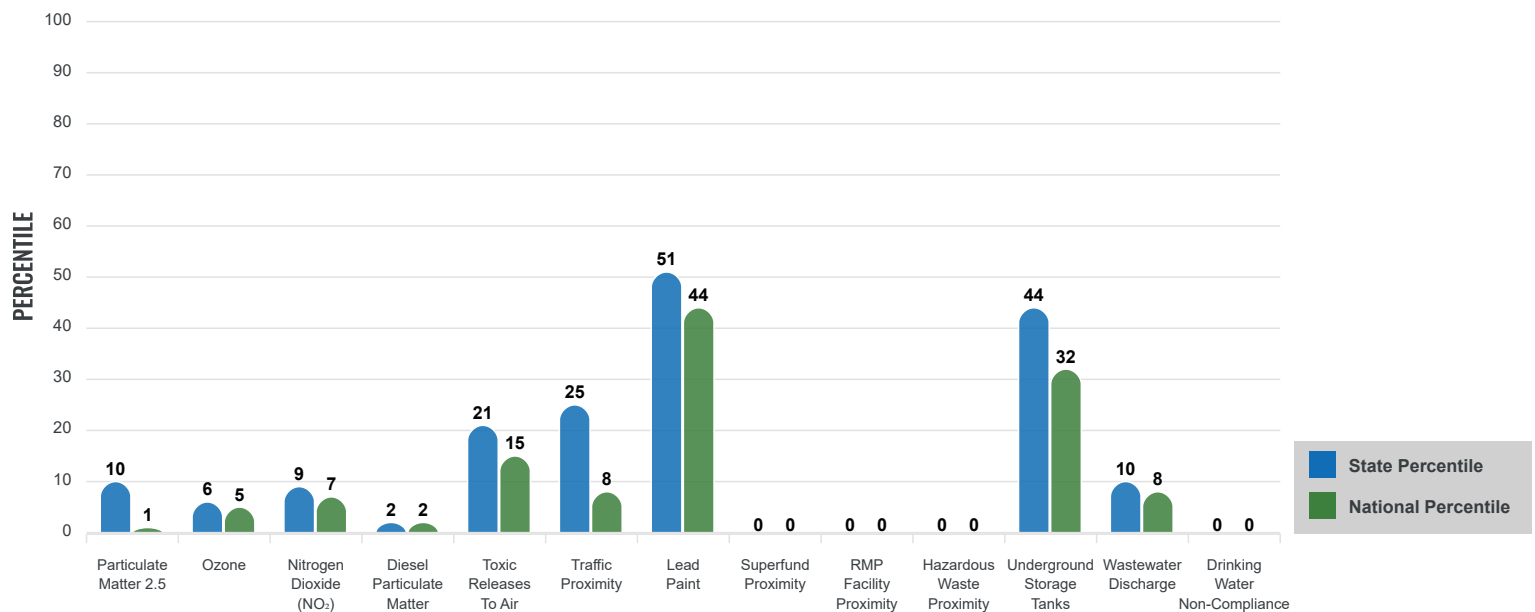
### EJ INDEXES FOR THE SELECTED LOCATION



## SUPPLEMENTAL INDEXES

The supplemental indexes offer a different perspective on community-level vulnerability. They combine data on percent low income, percent persons with disabilities, percent less than high school education, percent limited English speaking, and percent low life expectancy with a single environmental indicator.

### SUPPLEMENTAL INDEXES FOR THE SELECTED LOCATION



Report for 5 miles Ring Centered at 47.521200,-95.130744

Report produced August 9, 2024 using EJScreen Version 2.3

# EJScreen Environmental and Socioeconomic Indicators Data

SELECTED VARIABLES	VALUE	STATE AVERAGE	PERCENTILE IN STATE	USA AVERAGE	PERCENTILE IN USA
<b>ENVIRONMENTAL BURDEN INDICATORS</b>					
Particulate Matter 2.5 ( $\mu\text{g}/\text{m}^3$ )	5.1	6.63	9	8.45	1
Ozone (ppb)	51.8	55.8	6	61.8	5
Nitrogen Dioxide ( $\text{NO}_2$ ) (ppbv)	3.1	8.4	6	7.8	7
Diesel Particulate Matter ( $\mu\text{g}/\text{m}^3$ )	0.0314	0.168	2	0.191	2
Toxic Releases to Air (toxicity-weighted concentration)	46	1,500	17	4,600	17
Traffic Proximity (daily traffic count/distance to road)	42,000	1,300,000	19	1,700,000	11
Lead Paint (% Pre-1960 Housing)	0.23	0.32	46	0.3	52
Superfund Proximity (site count/km distance)	0	0.54	0	0.39	0
RMP Facility Proximity (facility count/km distance)	0	0.66	0	0.57	0
Hazardous Waste Proximity (facility count/km distance)	0	2.5	0	3.5	0
Underground Storage Tanks (count/ $\text{km}^2$ )	0.049	1.8	35	3.6	31
Wastewater Discharge (toxicity-weighted concentration/m distance)	4.8E-06	730	8	700000	7
Drinking Water Non-Compliance (points)	0	0.81	0	2.2	0
<b>SOCIOECONOMIC INDICATORS</b>					
Demographic Index USA	0.98	N/A	N/A	1.34	41
Supplemental Demographic Index USA	1.27	N/A	N/A	1.64	33
Demographic Index State	1.29	1.17	68	N/A	N/A
Supplemental Demographic Index State	1.37	1.37	57	N/A	N/A
People of Color	16%	21%	54	40%	30
Low Income	31%	23%	75	30%	57
Unemployment Rate	5%	4%	70	6%	59
Limited English Speaking Households	0%	2%	65	5%	56
Less Than High School Education	7%	6%	67	11%	46
Under Age 5	7%	6%	72	5%	72
Over Age 64	14%	17%	39	18%	41

\*Diesel particulate matter index is from the EPA's Air Toxics Data Update, which is the Agency's ongoing, comprehensive evaluation of air toxics in the United States. This effort aims to prioritize air toxics, emission sources, and locations of interest for further study. It is important to remember that the air toxics data presented here provide broad estimates of health risks over geographic areas of the country, not definitive risks to specific individuals or locations. More information on the Air Toxics Data Update can be found at: <https://www.epa.gov/haps/air-toxics-data-update>.

## Sites reporting to EPA within defined area:

Superfund .....	0
Hazardous Waste, Treatment, Storage, and Disposal Facilities .....	0
Water Dischargers .....	1
Air Pollution .....	3
Brownfields .....	0
Toxic Release Inventory .....	1

## Other community features within defined area:

Schools .....	1
Hospitals .....	0
Places of Worship .....	2

## Other environmental data:

Air Non-attainment .....	No
Impaired Waters .....	Yes

Selected location contains American Indian Reservation Lands* .....	No
Selected location contains a "Justice40 (CEJST)" disadvantaged community .....	Yes
Selected location contains an EPA IRA disadvantaged community .....	Yes

# EJScreen Environmental and Socioeconomic Indicators Data

HEALTH INDICATORS					
INDICATOR	VALUE	STATE AVERAGE	STATE PERCENTILE	US AVERAGE	US PERCENTILE
Low Life Expectancy	16%	17%	34	20%	19
Heart Disease	5.6	5.2	64	5.8	50
Asthma	10.2	9.5	84	10.3	49
Cancer	6.6	6.7	49	6.4	53
Persons with Disabilities	12.3%	11.6%	61	13.7%	46

CLIMATE INDICATORS					
INDICATOR	VALUE	STATE AVERAGE	STATE PERCENTILE	US AVERAGE	US PERCENTILE
Flood Risk	13%	8%	83	12%	75
Wildfire Risk	21%	4%	94	14%	83

CRITICAL SERVICE GAPS					
INDICATOR	VALUE	STATE AVERAGE	STATE PERCENTILE	US AVERAGE	US PERCENTILE
Broadband Internet	11%	11%	57	13%	54
Lack of Health Insurance	8%	5%	86	9%	59
Housing Burden	No	N/A	N/A	N/A	N/A
Transportation Access Burden	Yes	N/A	N/A	N/A	N/A
Food Desert	Yes	N/A	N/A	N/A	N/A

Report for 5 miles Ring Centered at 47.521200,-95.130744

Report produced August 9, 2024 using EJScreen Version 2.3