



# EJScreen Community Report

This report provides environmental and socioeconomic information for user-defined areas, and combines that data into environmental justice and supplemental indexes.

## Chippewa County, MN

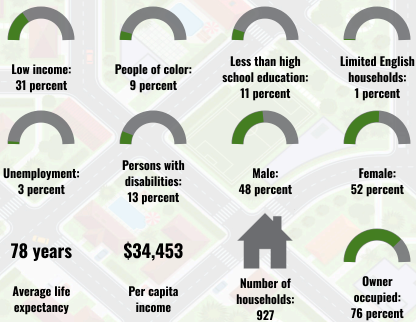
Tract: 27023950400  
Population: 2,405  
Area in square miles: 138.30

Dynamic map initially showing the user-selected area

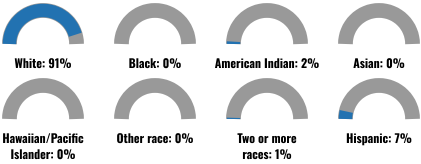
### LANGUAGES SPOKEN AT HOME

LANGUAGE	PERCENT
English	95%
Spanish	4%
Total Non-English	5%

### COMMUNITY INFORMATION



### BREAKDOWN BY RACE



### BREAKDOWN BY AGE



### LIMITED ENGLISH SPEAKING BREAKDOWN



Notes: Numbers may not sum to totals due to rounding. Hispanic population can be of any race. Source: U.S. Census Bureau, American Community Survey (ACS) 2018-2022. Life expectancy data comes from the Centers for Disease Control.

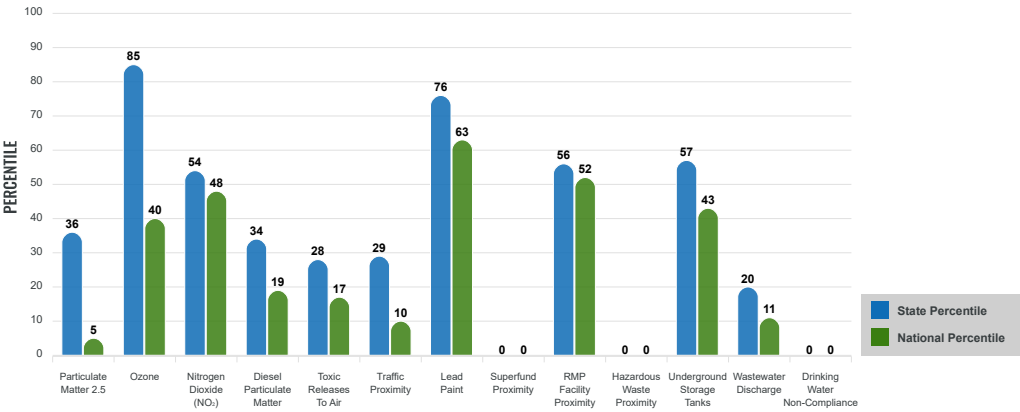
Environmental Justice & Supplemental Indexes

The environmental justice and supplemental indexes are a combination of environmental and socioeconomic information. There are thirteen EJ indexes and supplemental indexes in EJScreen reflecting the 13 environmental indicators. The indexes for a selected area are compared to those for all other locations in the state or nation. For more information and calculation details on the EJ and supplemental indexes, please visit the [EJScreen website](#).

EJ INDEXES

The EJ indexes help users screen for potential EJ concerns. To do this, the EJ index combines data on low income and people of color populations with a single environmental indicator.

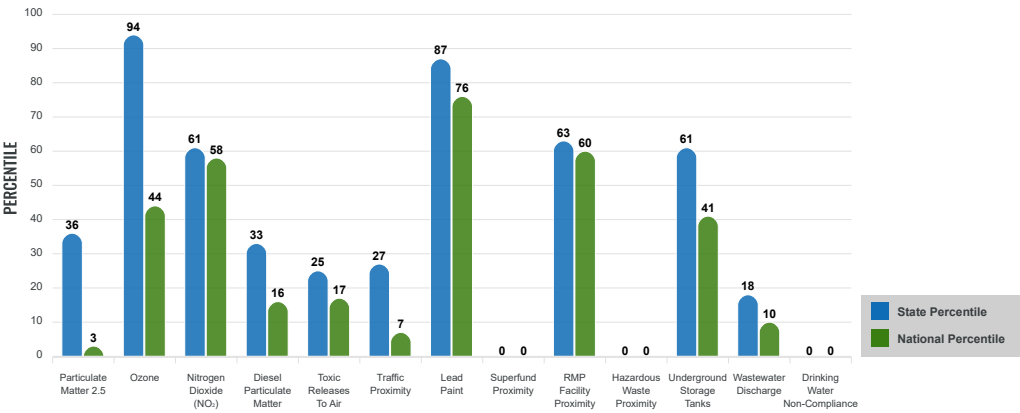
EJ INDEXES FOR THE SELECTED LOCATION



SUPPLEMENTAL INDEXES

The supplemental indexes offer a different perspective on community-level vulnerability. They combine data on percent low-income, percent linguistically isolated, percent less than high school education, percent unemployed, and low life expectancy with a single environmental indicator.

SUPPLEMENTAL INDEXES FOR THE SELECTED LOCATION



These percentiles provide perspective on how the selected block group or buffer area compares to the entire state or nation.  
Report for Tract: 27023950400

EJScreen Environmental and Socioeconomic Indicators Data

SELECTED VARIABLES	VALUE	STATE AVERAGE	PERCENTILE IN STATE	USA AVERAGE	PERCENTILE IN USA
ENVIRONMENTAL BURDEN INDICATORS					
Particulate Matter 2.5 (µg/m³)	5.71	6.63	20	8.45	3
Ozone (ppb)	38.8	37.2	87	41	38
Nitrogen Dioxide (NO₂) (ppbv)	7.7	8.4	38	7.8	51
Diesel Particulate Matter (µg/m³)	0.0677	0.168	18	0.191	15
Toxic Releases to Air (toxicity-weighted concentration)	35	1,500	15	4,600	15
Traffic Proximity (daily traffic count/distance to road)	26,000	1,300,000	15	1,700,000	8
Lead Paint (% Pre-1960 Housing)	0.59	0.32	80	0.3	80
Superfund Proximity (site count/km distance)	0	0.54	0	0.39	0
RMP Facility Proximity (facility count/km distance)	0.34	0.66	41	0.57	54
Hazardous Waste Proximity (facility count/km distance)	0	2.5	0	3.5	0
Underground Storage Tanks (count/km²)	0.15	1.8	41	3.6	35
Wastewater Discharge (toxicity-weighted concentration/m distance)	0.00014	730	10	700000	8
Drinking Water Non-Compliance (points)	0	0.81	0	2.2	0
SOCIOECONOMIC INDICATORS					
Demographic Index USA	0.88	N/A	N/A	1.34	36
Supplemental Demographic Index USA	1.58	N/A	N/A	1.64	52
Demographic Index State	1.14	1.17	62	N/A	N/A
Supplemental Demographic Index State	1.77	1.37	77	N/A	N/A
People of Color	9%	21%	37	40%	20
Low Income	31%	23%	75	30%	57
Unemployment Rate	3%	4%	54	6%	45
Limited English Speaking Households	1%	2%	73	5%	60
Less Than High School Education	11%	6%	83	11%	62
Under Age 5	7%	6%	69	5%	70
Over Age 64	21%	17%	67	18%	67

\*Diesel particulate matter index is from the EPA's Air Toxics Data Update, which is the Agency's ongoing, comprehensive evaluation of air toxics in the United States. This effort aims to prioritize air toxics, emission sources, and locations of interest for further study. It is important to remember that the air toxics data presented here provide broad estimates of health risks over geographic areas of the country, not definitive risks to specific individuals or locations. More information on the Air Toxics Data Update can be found at: <https://www.epa.gov/napca/air-toxics-data-update>.

Sites reporting to EPA within defined area:

Superfund .....	0
Hazardous Waste, Treatment, Storage, and Disposal Facilities .....	0
Water Dischargers .....	6
Air Pollution .....	4
Brownfields .....	0
Toxic Release Inventory .....	1

Other community features within defined area:

Schools .....	2
Hospitals .....	4
Places of Worship .....	10

Other environmental data:

Air Non-attainment .....	No
Impaired Waters .....	Yes

Selected location contains American Indian Reservation Lands* .....	No
Selected location contains a "Justice40 (CEJST)" disadvantaged community .....	No
Selected location contains an EPA IRA disadvantaged community .....	Yes

Report for Tract: 27023950400

EJScreen Environmental and Socioeconomic Indicators Data

HEALTH INDICATORS					
INDICATOR	VALUE	STATE AVERAGE	STATE PERCENTILE	US AVERAGE	US PERCENTILE
Low Life Expectancy	20%	17%	82	20%	57
Heart Disease	7.6	5.2	91	5.8	84
Asthma	9.7	9.5	67	10.3	34
Cancer	9	6.7	93	6.4	94
Persons with Disabilities	12.8%	11.6%	65	13.7%	49

CLIMATE INDICATORS					
INDICATOR	VALUE	STATE AVERAGE	STATE PERCENTILE	US AVERAGE	US PERCENTILE
Flood Risk	11%	8%	76	12%	71
Wildfire Risk	0%	4%	0	14%	0

CRITICAL SERVICE GAPS					
INDICATOR	VALUE	STATE AVERAGE	STATE PERCENTILE	US AVERAGE	US PERCENTILE
Broadband Internet	13%	11%	64	13%	60
Lack of Health Insurance	3%	5%	36	9%	20
Housing Burden	No	N/A	N/A	N/A	N/A
Transportation Access Burden	Yes	N/A	N/A	N/A	N/A
Food Desert	No	N/A	N/A	N/A	N/A

Report for Tract: 27023950400  
Report produced July 16, 2024 using EJScreen Version 2.3



# EJScreen Community Report

This report provides environmental and socioeconomic information for user-defined areas, and combines that data into environmental justice and supplemental indexes.

## Redwood County, MN

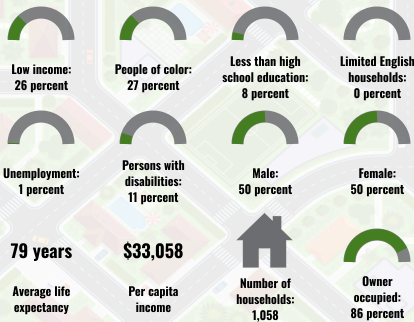
Tract: 27127750100  
Population: 2,821  
Area in square miles: 208.98

Dynamic map initially showing the user-selected area

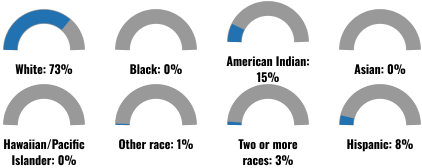
### LANGUAGES SPOKEN AT HOME

LANGUAGE	PERCENT
English	96%
Spanish	1%
Other and Unspecified	2%
Total Non-English	4%

### COMMUNITY INFORMATION



### BREAKDOWN BY RACE



### BREAKDOWN BY AGE



### LIMITED ENGLISH SPEAKING BREAKDOWN



Notes: Numbers may not sum to totals due to rounding. Hispanic population can be of any race. Source: U.S. Census Bureau, American Community Survey (ACS) 2018-2022. Life expectancy data comes from the Centers for Disease Control.

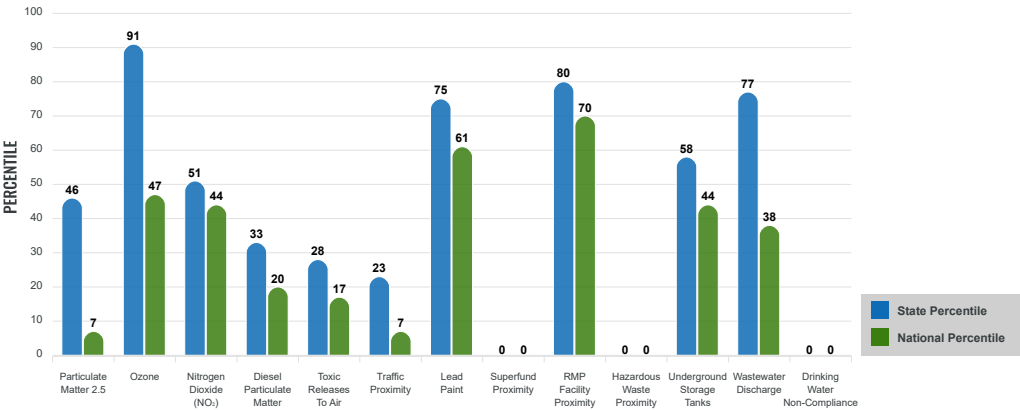
Environmental Justice & Supplemental Indexes

The environmental justice and supplemental indexes are a combination of environmental and socioeconomic information. There are thirteen EJ indexes and supplemental indexes in EJScreen reflecting the 13 environmental indicators. The indexes for a selected area are compared to those for all other locations in the state or nation. For more information and calculation details on the EJ and supplemental indexes, please visit the [EJScreen website](#).

EJ INDEXES

The EJ indexes help users screen for potential EJ concerns. To do this, the EJ index combines data on low income and people of color populations with a single environmental indicator.

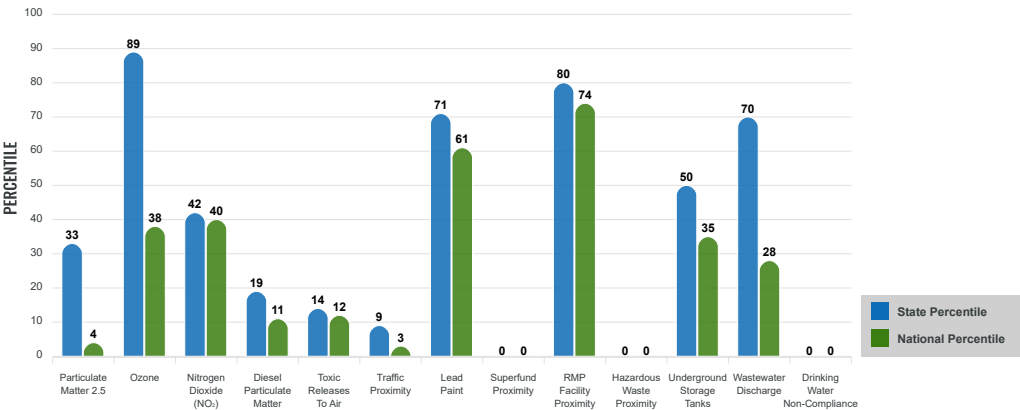
EJ INDEXES FOR THE SELECTED LOCATION



SUPPLEMENTAL INDEXES

The supplemental indexes offer a different perspective on community-level vulnerability. They combine data on percent low-income, percent linguistically isolated, percent less than high school education, percent unemployed, and low life expectancy with a single environmental indicator.

SUPPLEMENTAL INDEXES FOR THE SELECTED LOCATION



These percentiles provide perspective on how the selected block group or buffer area compares to the entire state or nation.  
Report for Tract: 27127750100

EJScreen Environmental and Socioeconomic Indicators Data

SELECTED VARIABLES	VALUE	STATE AVERAGE	PERCENTILE IN STATE	USA AVERAGE	PERCENTILE IN USA
ENVIRONMENTAL BURDEN INDICATORS					
Particulate Matter 2.5 (µg/m³)	5.86	6.63	23	8.45	4
Ozone (ppb)	39	37.2	90	41	39
Nitrogen Dioxide (NO2) (ppbv)	6.5	8.4	29	7.8	38
Diesel Particulate Matter (µg/m³)	0.0629	0.168	15	0.191	13
Toxic Releases to Air (toxicity-weighted concentration)	21	1,500	11	4,600	12
Traffic Proximity (daily traffic count/distance to road)	9,500	1,300,000	8	1,700,000	4
Lead Paint (% Pre-1960 Housing)	0.46	0.32	69	0.3	71
Superfund Proximity (site count/km distance)	0	0.54	0	0.39	0
RMP Facility Proximity (facility count/km distance)	2.1	0.66	95	0.57	95
Hazardous Waste Proximity (facility count/km distance)	0	2.5	0	3.5	0
Underground Storage Tanks (count/km²)	0.17	1.8	42	3.6	36
Wastewater Discharge (toxicity-weighted concentration/m distance)	5	730	70	700000	31
Drinking Water Non-Compliance (points)	0	0.81	0	2.2	0
SOCIOECONOMIC INDICATORS					
Demographic Index USA	1.04	N/A	N/A	1.34	44
Supplemental Demographic Index USA	1.34	N/A	N/A	1.64	37
Demographic Index State	1.41	1.17	72	N/A	N/A
Supplemental Demographic Index State	1.44	1.37	61	N/A	N/A
People of Color	27%	21%	72	40%	45
Low Income	26%	23%	66	30%	49
Unemployment Rate	1%	4%	32	6%	30
Limited English Speaking Households	0%	2%	0	5%	0
Less Than High School Education	8%	6%	73	11%	51
Under Age 5	6%	6%	62	5%	64
Over Age 64	18%	17%	59	18%	59

\*Diesel particulate matter index is from the EPA's Air Toxics Data Update, which is the Agency's ongoing, comprehensive evaluation of air toxics in the United States. This effort aims to prioritize air toxics, emission sources, and locations of interest for further study. It is important to remember that the air toxics data presented here provide broad estimates of health risks over geographic areas of the country, not definitive risks to specific individuals or locations. More information on the Air Toxics Data Update can be found at: <https://www.epa.gov/napca/air-toxics-data-update>.

Sites reporting to EPA within defined area:

Superfund .....	0
Hazardous Waste, Treatment, Storage, and Disposal Facilities .....	0
Water Dischargers .....	9
Air Pollution .....	4
Brownfields .....	0
Toxic Release Inventory .....	0

Other community features within defined area:

Schools .....	1
Hospitals .....	2
Places of Worship .....	15

Other environmental data:

Air Non-attainment .....	No
Impaired Waters .....	Yes

Selected location contains American Indian Reservation Lands* .....	Yes
Selected location contains a "Justice40 (CEJST)" disadvantaged community .....	No
Selected location contains an EPA IRA disadvantaged community .....	Yes

Report for Tract: 27127750100

EJScreen Environmental and Socioeconomic Indicators Data

HEALTH INDICATORS					
INDICATOR	VALUE	STATE AVERAGE	STATE PERCENTILE	US AVERAGE	US PERCENTILE
Low Life Expectancy	19%	17%	69	20%	45
Heart Disease	6.9	5.2	84	5.8	74
Asthma	9.7	9.5	67	10.3	34
Cancer	8	6.7	77	6.4	83
Persons with Disabilities	10.9%	11.6%	48	13.7%	36

CLIMATE INDICATORS					
INDICATOR	VALUE	STATE AVERAGE	STATE PERCENTILE	US AVERAGE	US PERCENTILE
Flood Risk	15%	8%	87	12%	78
Wildfire Risk	0%	4%	0	14%	0

CRITICAL SERVICE GAPS					
INDICATOR	VALUE	STATE AVERAGE	STATE PERCENTILE	US AVERAGE	US PERCENTILE
Broadband Internet	22%	11%	90	13%	82
Lack of Health Insurance	10%	5%	93	9%	69
Housing Burden	No	N/A	N/A	N/A	N/A
Transportation Access Burden	Yes	N/A	N/A	N/A	N/A
Food Desert	Yes	N/A	N/A	N/A	N/A

Report for Tract: 27127750100  
Report produced July 16, 2024 using EJScreen Version 2.3



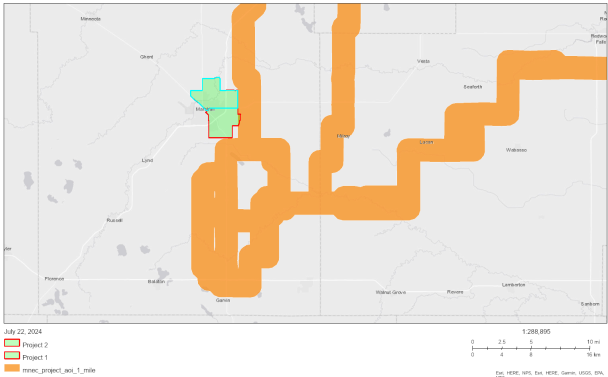


# EJScreen Community Report

This report provides environmental and socioeconomic information for user-defined areas, and combines that data into environmental justice and supplemental indexes.

## Marshall, MN

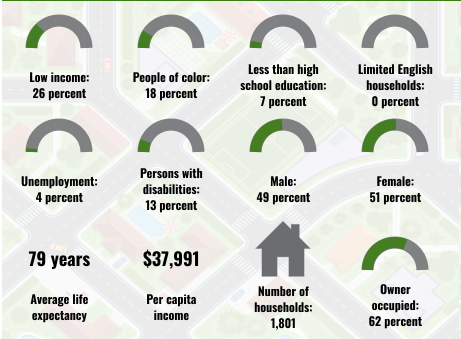
Tract: 27083360500  
Population: 4,558  
Area in square miles: 5.98



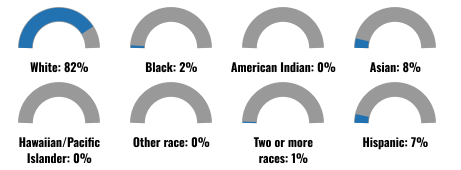
### LANGUAGES SPOKEN AT HOME

LANGUAGE	PERCENT
English	89%
Spanish	5%
Other Asian and Pacific Island	5%
Other and Unspecified	1%
Total Non-English	11%

### COMMUNITY INFORMATION



### BREAKDOWN BY RACE



### BREAKDOWN BY AGE



### LIMITED ENGLISH SPEAKING BREAKDOWN



Notes: Numbers may not sum to totals due to rounding. Hispanic population can be of any race. Source: U.S. Census Bureau, American Community Survey (ACS) 2018-2022. Life expectancy data comes from the Centers for Disease Control.

Report for Tract: 27083360500  
Report produced July 22, 2024 using EJScreen Version 2.3

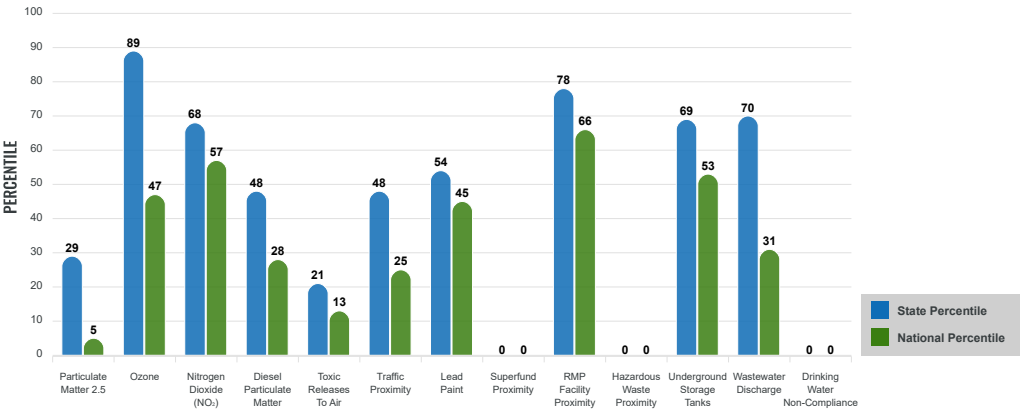
Environmental Justice & Supplemental Indexes

The environmental justice and supplemental indexes are a combination of environmental and socioeconomic information. There are thirteen EJ indexes and supplemental indexes in EJScreen reflecting the 13 environmental indicators. The indexes for a selected area are compared to those for all other locations in the state or nation. For more information and calculation details on the EJ and supplemental indexes, please visit the [EJScreen website](#).

EJ INDEXES

The EJ indexes help users screen for potential EJ concerns. To do this, the EJ index combines data on low income and people of color populations with a single environmental indicator.

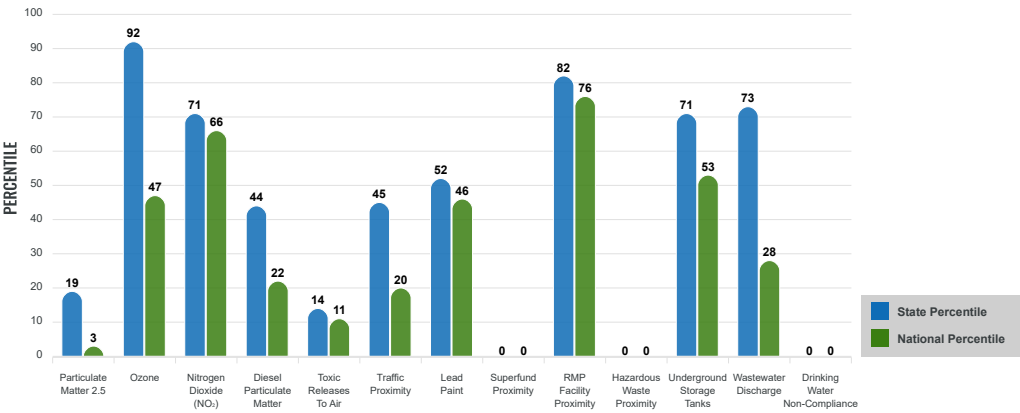
EJ INDEXES FOR THE SELECTED LOCATION



SUPPLEMENTAL INDEXES

The supplemental indexes offer a different perspective on community-level vulnerability. They combine data on percent low-income, percent linguistically isolated, percent less than high school education, percent unemployed, and low life expectancy with a single environmental indicator.

SUPPLEMENTAL INDEXES FOR THE SELECTED LOCATION



Report for Tract: 27083360500  
Report produced July 22, 2024 using EJScreen Version 2.3

EJScreen Environmental and Socioeconomic Indicators Data

SELECTED VARIABLES	VALUE	STATE AVERAGE	PERCENTILE IN STATE	USA AVERAGE	PERCENTILE IN USA
ENVIRONMENTAL BURDEN INDICATORS					
Particulate Matter 2.5 (µg/m³)	5.55	6.63	15	8.45	3
Ozone (ppb)	40.1	37.2	96	41	46
Nitrogen Dioxide (NO₂) (ppbv)	9.7	8.4	60	7.8	71
Diesel Particulate Matter (µg/m³)	0.0867	0.168	29	0.191	23
Toxic Releases to Air (toxicity-weighted concentration)	18	1,500	10	4,600	11
Traffic Proximity (daily traffic count/distance to road)	140,000	1,300,000	31	1,700,000	20
Lead Paint (% Pre-1960 Housing)	0.23	0.32	46	0.3	52
Superfund Proximity (site count/km distance)	0	0.54	0	0.39	0
RMP Facility Proximity (facility count/km distance)	1.6	0.66	89	0.57	90
Hazardous Waste Proximity (facility count/km distance)	0	2.5	0	3.5	0
Underground Storage Tanks (count/km²)	1.4	1.8	67	3.6	57
Wastewater Discharge (toxicity-weighted concentration/m distance)	3.3	730	64	700000	28
Drinking Water Non-Compliance (points)	0	0.81	0	2.2	0
SOCIOECONOMIC INDICATORS					
Demographic Index USA	0.89	N/A	N/A	1.34	37
Supplemental Demographic Index USA	1.38	N/A	N/A	1.64	39
Demographic Index State	1.19	1.17	64	N/A	N/A
Supplemental Demographic Index State	1.49	1.37	64	N/A	N/A
People of Color	18%	21%	58	40%	34
Low Income	26%	23%	65	30%	49
Unemployment Rate	4%	4%	64	6%	53
Limited English Speaking Households	0%	2%	67	5%	57
Less Than High School Education	7%	6%	68	11%	47
Under Age 5	9%	6%	81	5%	80
Over Age 64	19%	17%	61	18%	61

\*Diesel particulate matter index is from the EPA's Air Toxics Data Update, which is the Agency's ongoing, comprehensive evaluation of air toxics in the United States. This effort aims to prioritize air toxics, emission sources, and locations of interest for further study. It is important to remember that the air toxics data presented here provide broad estimates of health risks over geographic areas of the country, not definitive risks to specific individuals or locations. More information on the Air Toxics Data Update can be found at: <https://www.epa.gov/napca/air-toxics-data-update>.

Sites reporting to EPA within defined area:

Superfund .....	0
Hazardous Waste, Treatment, Storage, and Disposal Facilities .....	0
Water Dischargers .....	0
Air Pollution .....	1
Brownfields .....	0
Toxic Release Inventory .....	0

Other community features within defined area:

Schools .....	5
Hospitals .....	4
Places of Worship .....	4

Other environmental data:

Air Non-attainment .....	No
Impaired Waters .....	Yes

Selected location contains American Indian Reservation Lands* .....	No
Selected location contains a "Justice40 (CEJST)" disadvantaged community .....	No
Selected location contains an EPA IRA disadvantaged community .....	Yes

Report for Tract: 27083360500  
Report produced July 22, 2024 using EJScreen Version 2.3

EJScreen Environmental and Socioeconomic Indicators Data

HEALTH INDICATORS					
INDICATOR	VALUE	STATE AVERAGE	STATE PERCENTILE	US AVERAGE	US PERCENTILE
Low Life Expectancy	19%	17%	72	20%	48
Heart Disease	6	5.2	71	5.8	57
Asthma	9.7	9.5	67	10.3	34
Cancer	7.2	6.7	60	6.4	66
Persons with Disabilities	11.9%	11.6%	58	13.7%	44

CLIMATE INDICATORS					
INDICATOR	VALUE	STATE AVERAGE	STATE PERCENTILE	US AVERAGE	US PERCENTILE
Flood Risk	9%	8%	65	12%	63
Wildfire Risk	0%	4%	0	14%	0

CRITICAL SERVICE GAPS					
INDICATOR	VALUE	STATE AVERAGE	STATE PERCENTILE	US AVERAGE	US PERCENTILE
Broadband Internet	10%	11%	56	13%	52
Lack of Health Insurance	4%	5%	45	9%	25
Housing Burden	No	N/A	N/A	N/A	N/A
Transportation Access Burden	Yes	N/A	N/A	N/A	N/A
Food Desert	No	N/A	N/A	N/A	N/A

Report for Tract: 27083360500  
Report produced July 22, 2024 using EJScreen Version 2.3