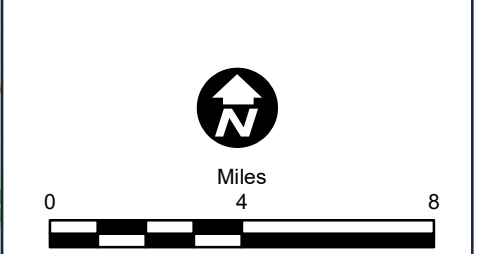
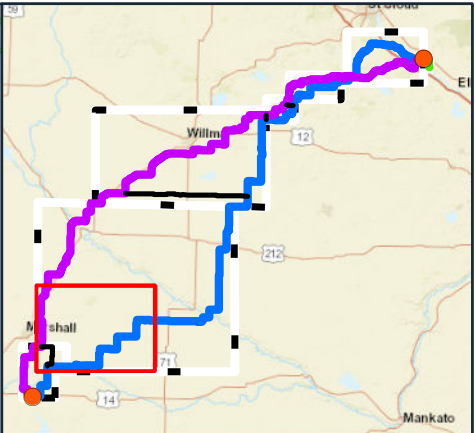
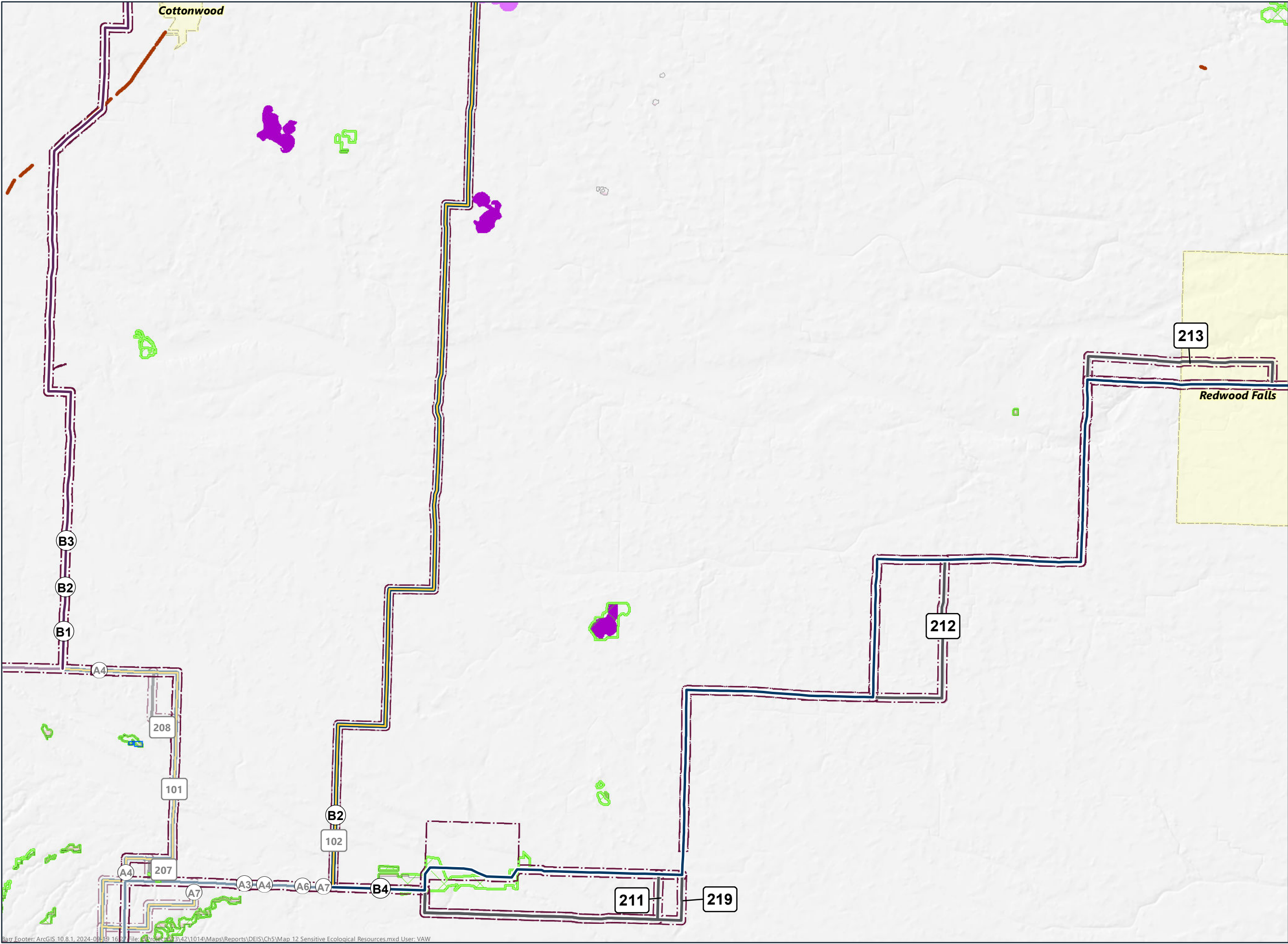


- (A1) Route Segment Label
- 200 Refinement Label
- Route Segment B1 (Purple Route)
- Route Segment B4 (Blue Route)
- Route Segment (incorporates alternative[s])
- Refinement
- Route Connector
- Proposed Route
- Municipal Boundary
- Railroad Right-of-Way
- Prairies
- Native Prairie Bank Easement
- Native Plant Community
- Scientific and Natural Area Boundaries
- Site of Biodiversity Significance**
  - Outstanding Significance
  - High Significance
  - Moderate Significance
- Lakes of Biological Significance**
  - High
  - Moderate







A1

Route Segment Label

200

Refinement Label

Route Segment B1  
(Purple Route)

Route Segment B4  
(Blue Route)

Route Segment  
(incorporates alternative[s])

Refinement

Route Connector

Proposed Route

Municipal Boundary

Railroad Right-of-Way  
Prairies

Native Prairie  
Bank Easement

Native Plant Community

Site of Biodiversity Significance

Moderate Significance

Lakes of Biological Significance

High

Moderate

N

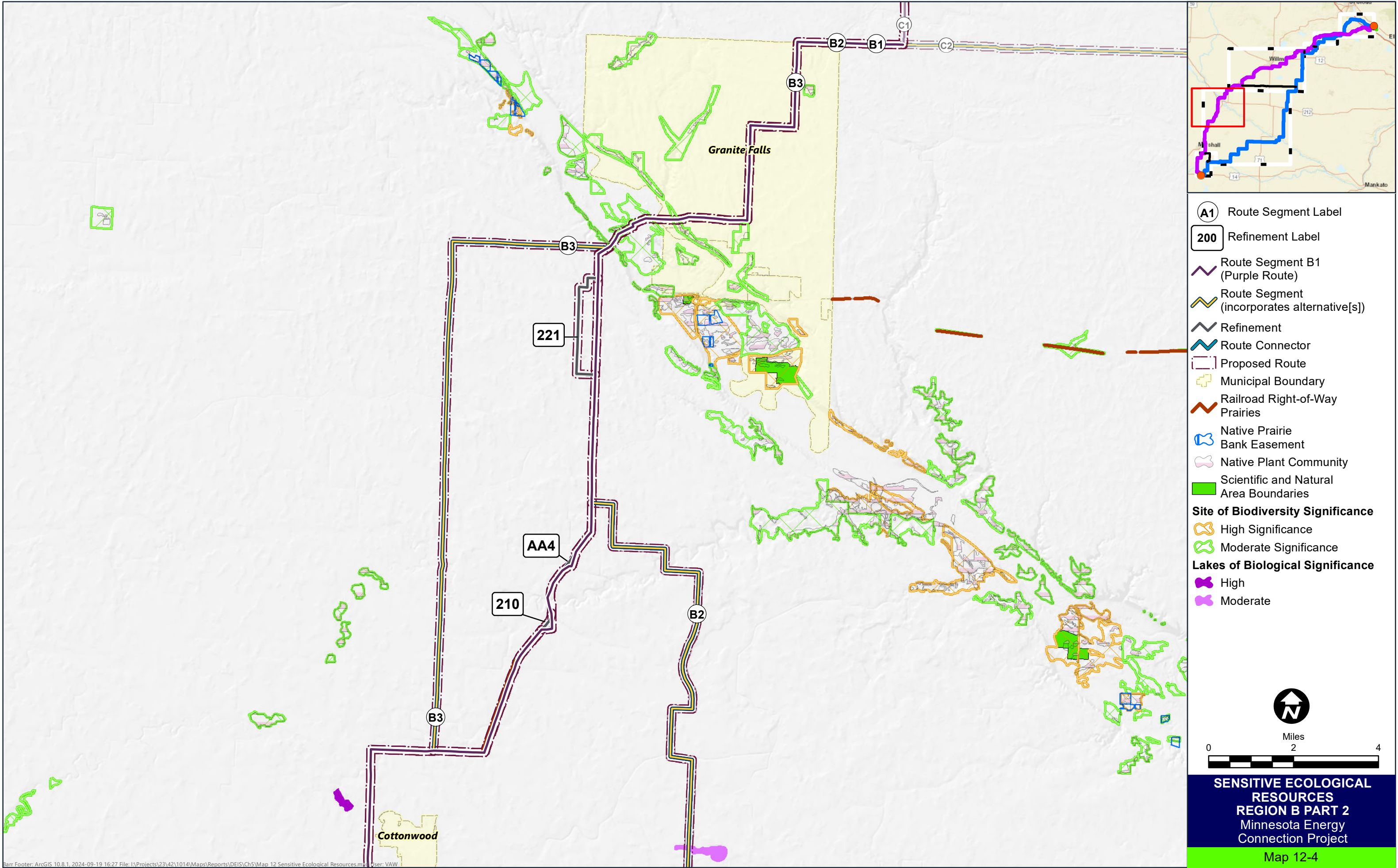
Miles  
0 2 4

SENSITIVE ECOLOGICAL  
RESOURCES  
REGION B PART 1  
Minnesota Energy  
Connection Project

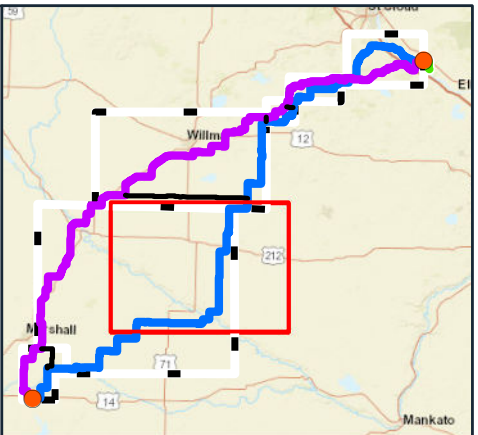
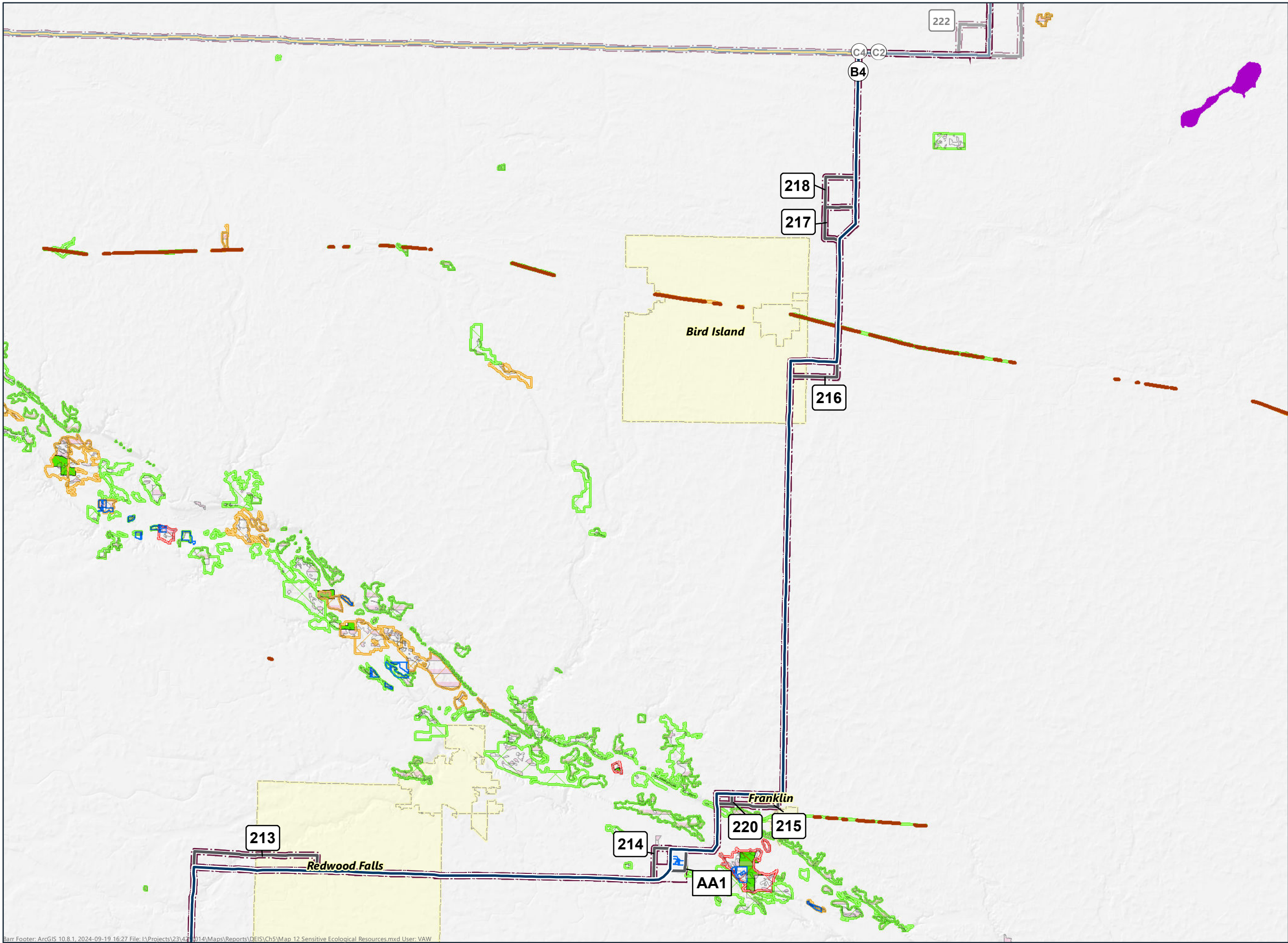
Map 12-3

Barr Footer: ArcGIS 10.8.1, 2024-09-19 16:27 File: C:\Projects\3142\1014\Maps\Reports\DEIS\Ch5\Map 12 Sensitive Ecological Resources.mxd User: VAW

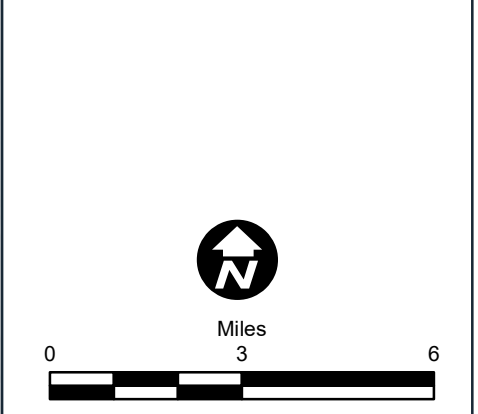




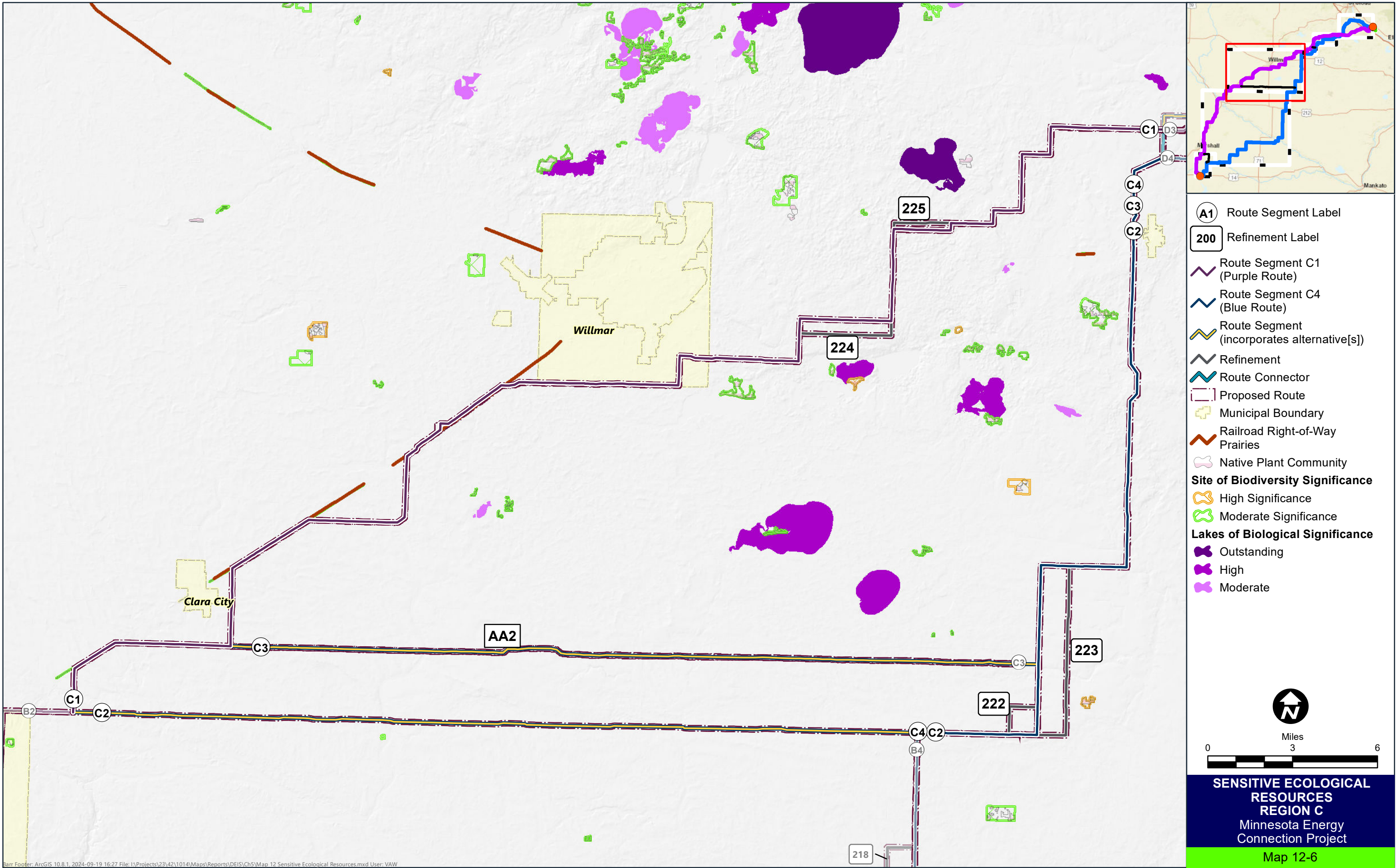




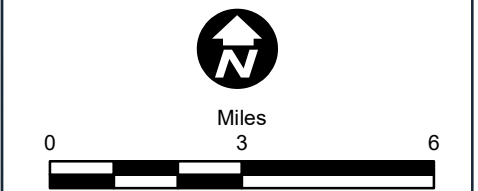
- (A1)** Route Segment Label
- 200** Refinement Label
- Route Segment B4 (Blue Route)
- Route Segment (incorporates alternative[s])
- Refinement
- Proposed Route
- Municipal Boundary
- Railroad Right-of-Way
- Prairies
- Native Prairie Bank Easement
- Native Plant Community
- Scientific and Natural Area Boundaries
- Site of Biodiversity Significance**
  - Outstanding Significance
  - High Significance
  - Moderate Significance
- Lakes of Biological Significance**
  - High

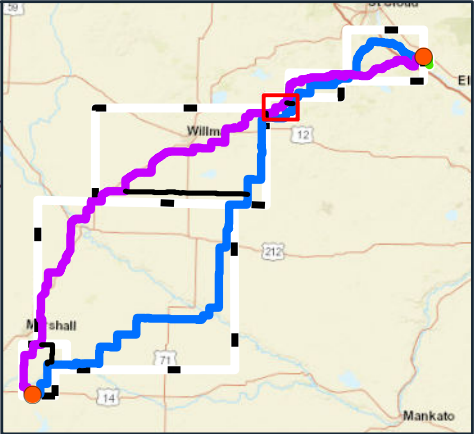
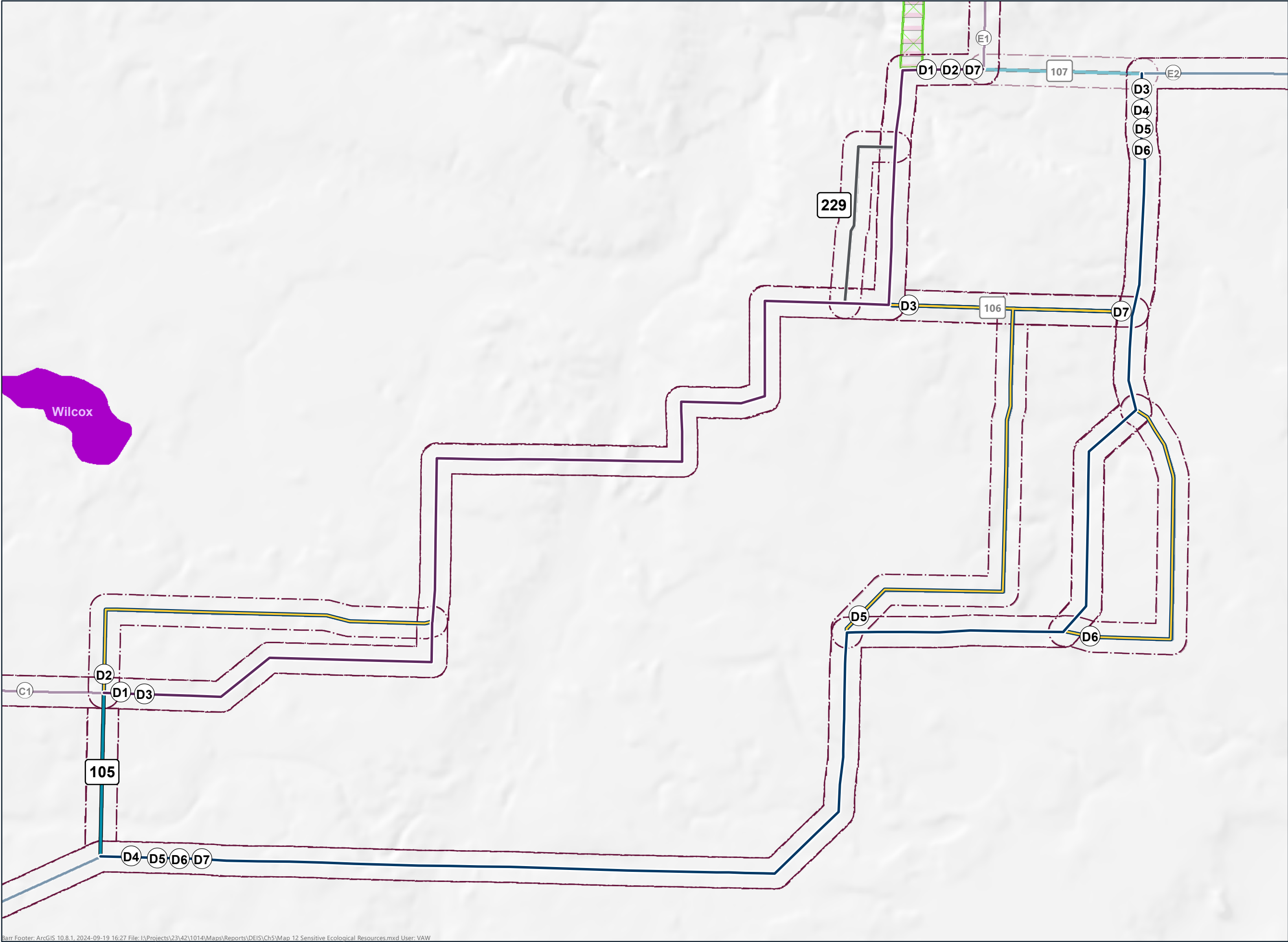




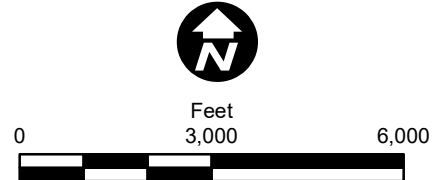


- A1** Route Segment Label
- 200** Refinement Label
- Route Segment C1 (Purple Route)
- Route Segment C4 (Blue Route)
- Route Segment (incorporates alternative[s])
- Refinement
- Route Connector
- Proposed Route
- Municipal Boundary
- Railroad Right-of-Way
- Prairies
- Native Plant Community
- Site of Biodiversity Significance**
  - High Significance
  - Moderate Significance
- Lakes of Biological Significance**
  - Outstanding
  - High
  - Moderate



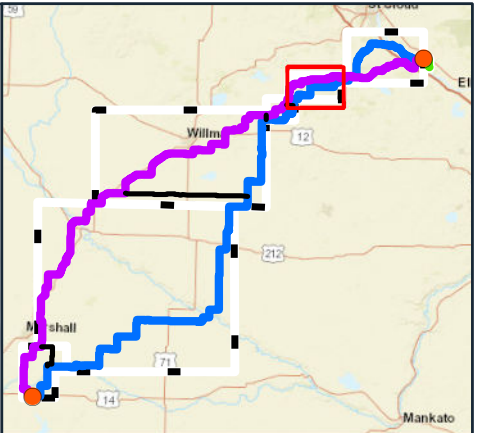
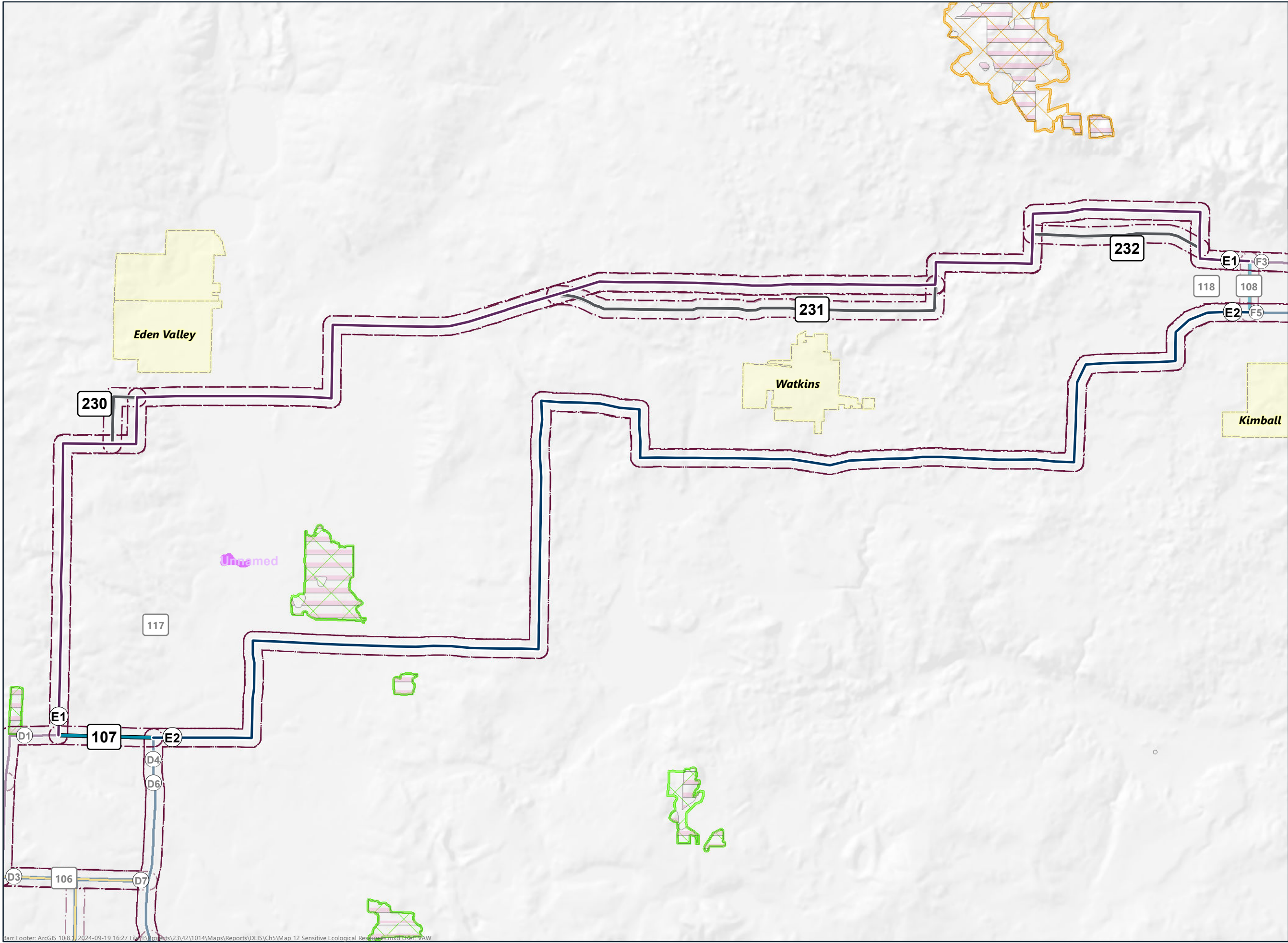


- (A1)** Route Segment Label
- 200** Refinement Label
- Route Segment D1 (Purple Route)
- Route Segment D4 (Blue Route)
- Route Segment (incorporates alternative[s])
- Refinement
- Route Connector
- Proposed Route
- Native Plant Community
- Site of Biodiversity Significance**
- Moderate Significance
- Lakes of Biological Significance**
- High



**SENSITIVE ECOLOGICAL  
RESOURCES  
REGION D**  
Minnesota Energy  
Connection Project





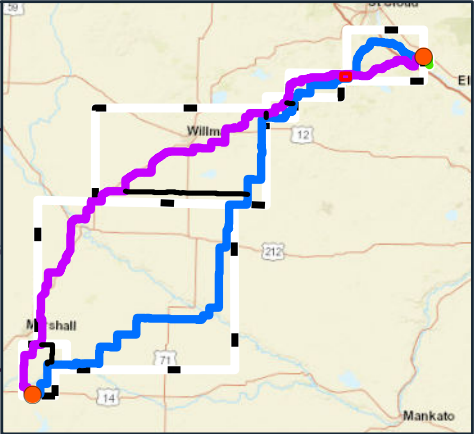
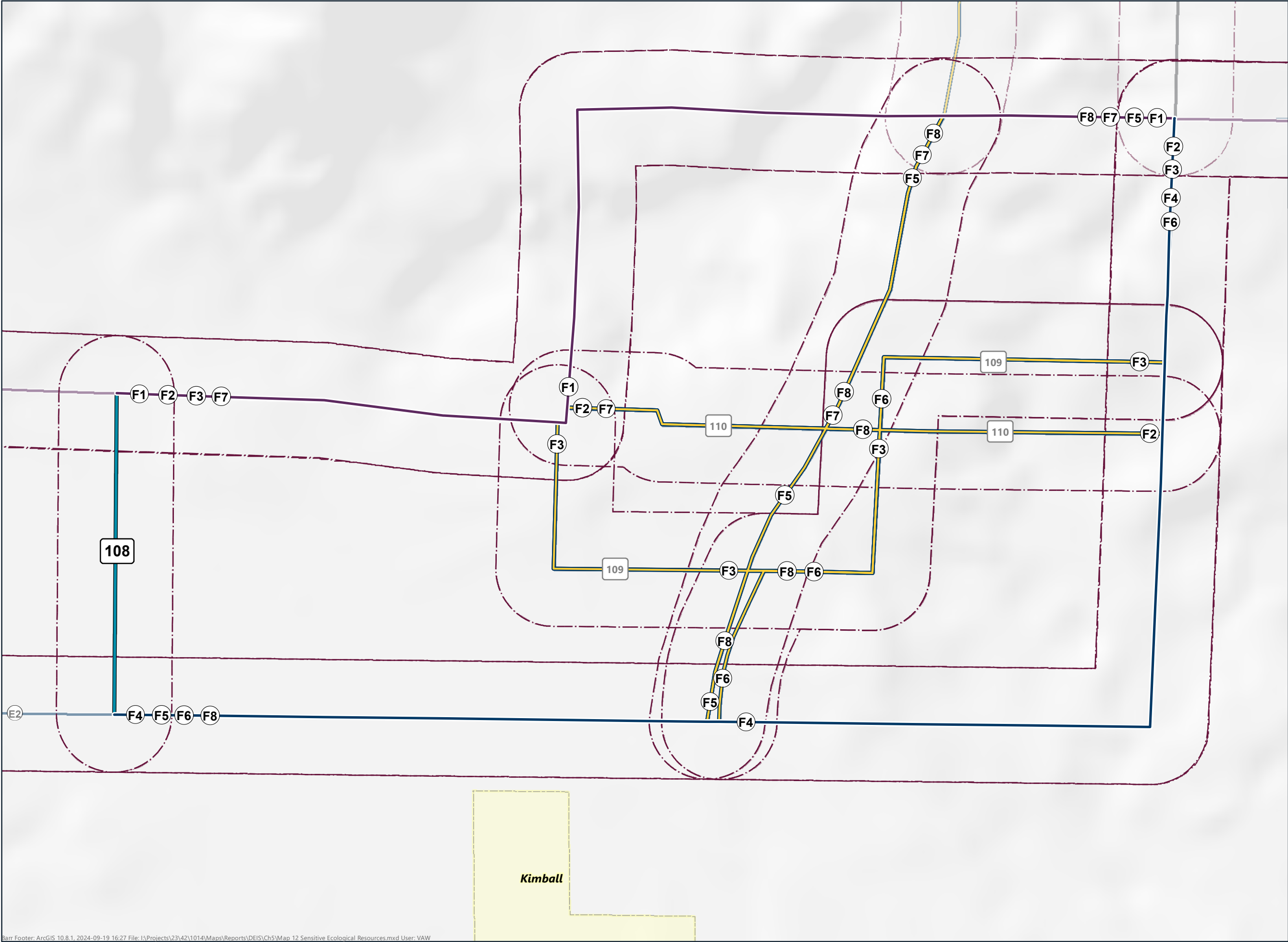
- (A1) Route Segment Label
- 200 Refinement Label
- Route Segment E1 (Purple Route)
- Route Segment E2 (Blue Route)
- Route Segment (incorporates alternative[s])
- Refinement
- Route Connector
- Proposed Route
- Municipal Boundary
- Native Plant Community
- Site of Biodiversity Significance**
  - High Significance
  - Moderate Significance
- Lakes of Biological Significance**
  - Moderate

Feet  
0 5,000 10,000

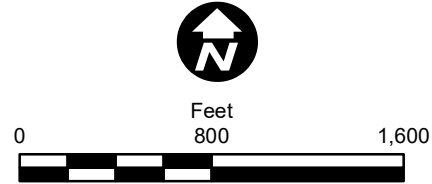
**SENSITIVE ECOLOGICAL  
RESOURCES  
REGION E**  
Minnesota Energy  
Connection Project

Map 12-8



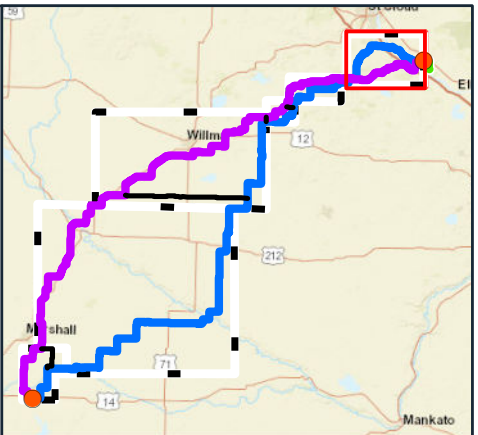
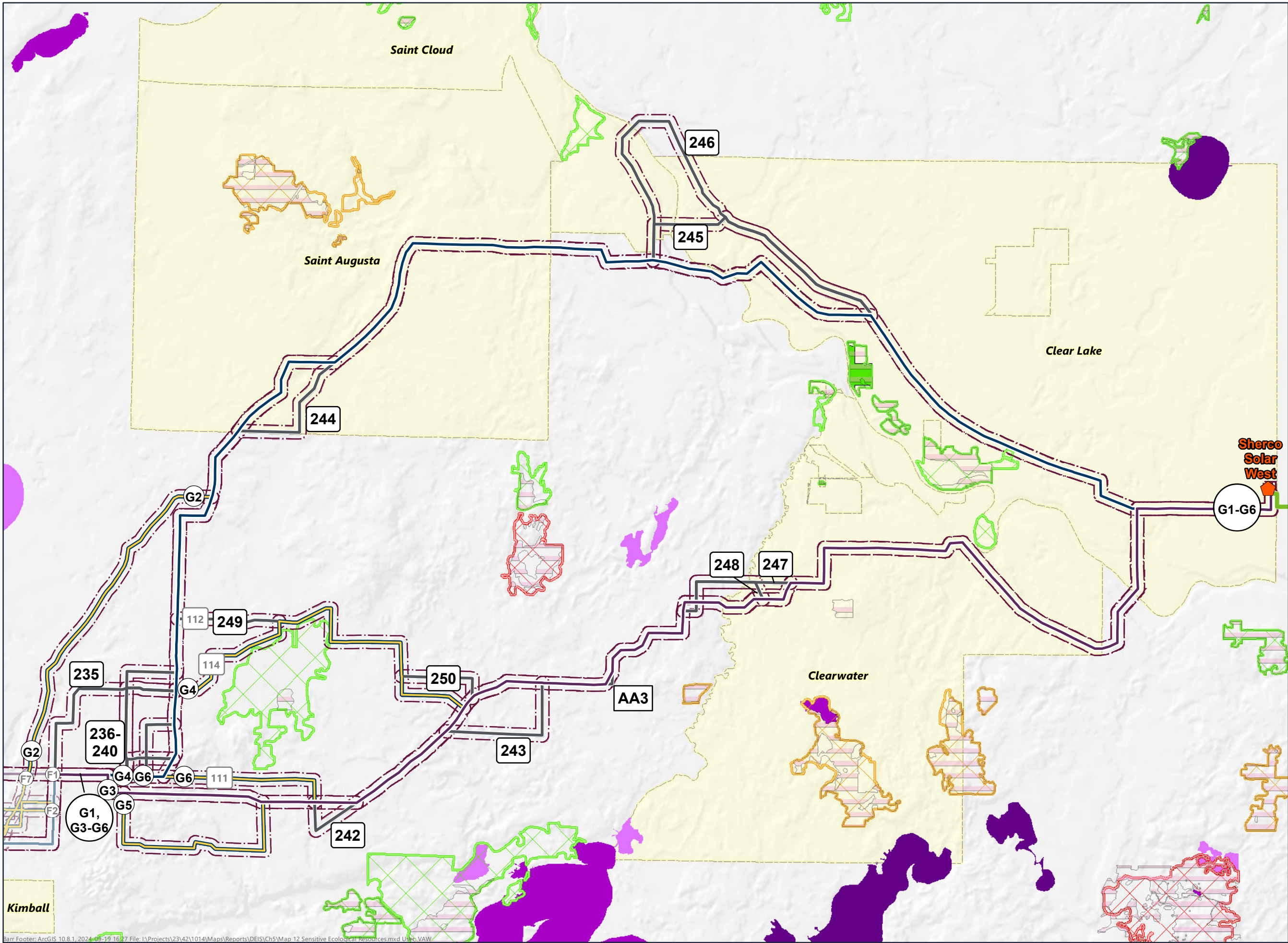


- (A1)** Route Segment Label
- 200** Refinement Label
- Route Segment F1 (Purple Route)
- Route Segment F4 (Blue Route)
- Route Segment (incorporates alternative[s])
- Route Connector
- Proposed Route
- Municipal Boundary

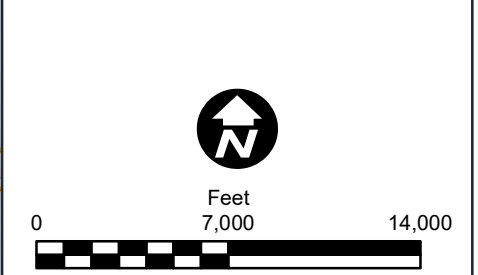


**SENSITIVE ECOLOGICAL  
RESOURCES  
REGION F**  
Minnesota Energy  
Connection Project

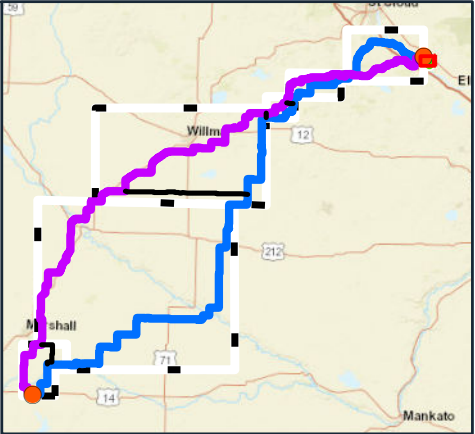
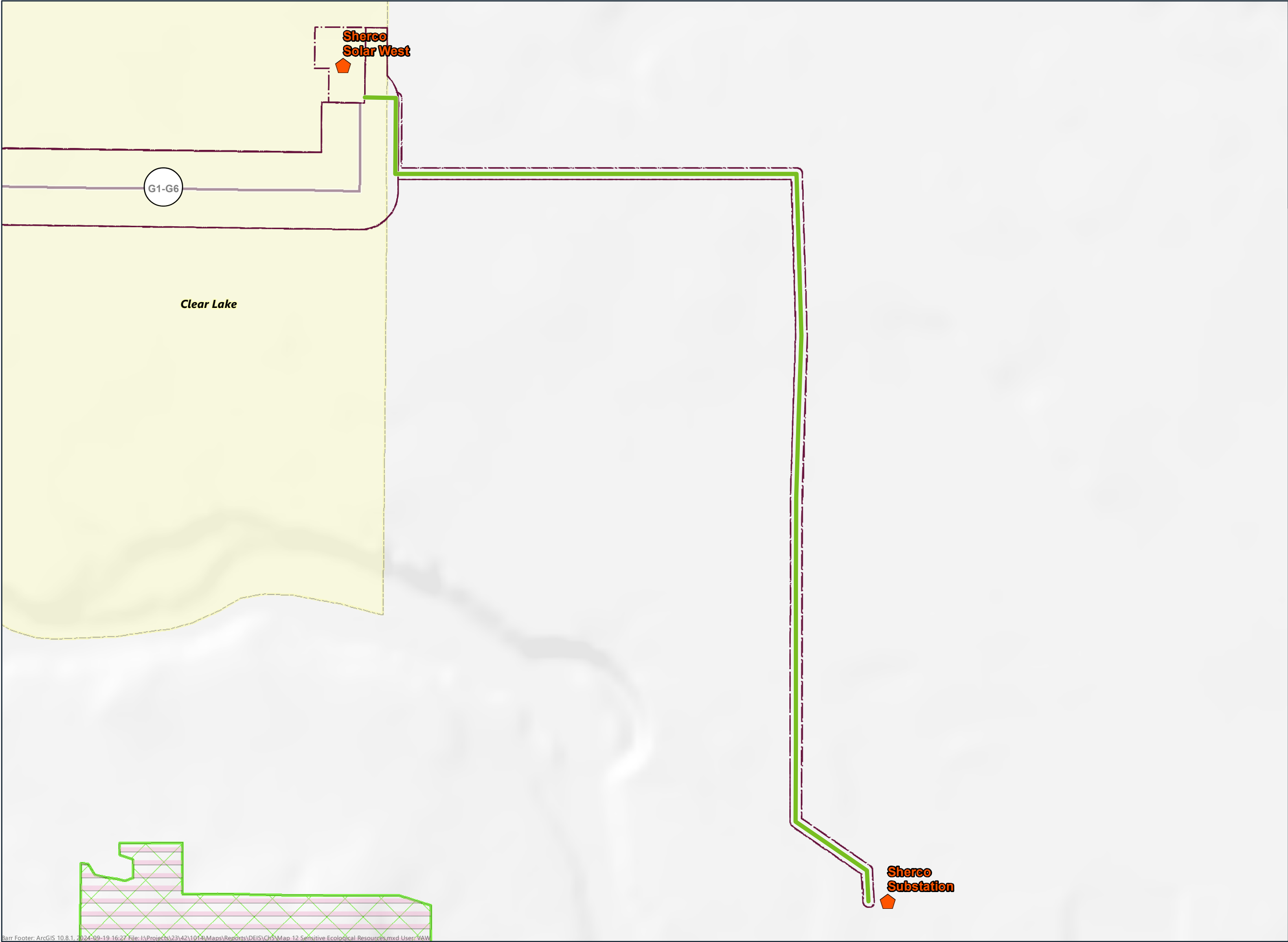




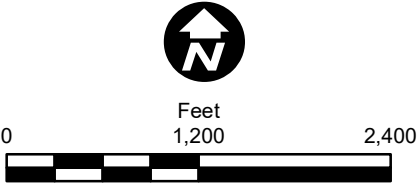
- (A1)** Route Segment Label
- 200** Refinement Label
- Route Segment G1 (Blue Route)
- Route Segment G3 (Purple Route)
- Green Route Segment
- Route Segment (incorporates alternative[s])
- Refinement
- Route Connector
- Proposed Route
- Existing Substation
- Municipal Boundary
- Native Plant Community
- Scientific and Natural Area Boundaries
- Site of Biodiversity Significance**
  - Outstanding Significance
  - High Significance
  - Moderate Significance
- Lakes of Biological Significance**
  - Outstanding
  - High
  - Moderate







- (A1)** Route Segment Label
- 200** Refinement Label
- Green Route Segment
- Proposed Route
- Existing Substation
- Municipal Boundary
- Native Plant Community
- Site of Biodiversity Significance**
- Moderate Significance



**SENSITIVE ECOLOGICAL  
RESOURCES  
GREEN ROUTE SEGMENT**  
Minnesota Energy  
Connection Project