

BEFORE THE MINNESOTA PUBLIC UTILITIES COMMISSION

Katie J. Sieben  
Valerie Means  
Matthew Schuerger  
Joseph K. Sullivan  
John A. Tuma

Chair  
Commissioner  
Commissioner  
Commissioner  
Commissioner

In the Matter of the Application of Dodge County Wind, LLC for a Certificate of Need, a Site Permit, and a Route Permit for the up to 259 MW Large Wind Energy Conversion System and Associated 161 kV Transmission Line in Dodge, Mower and Steele Counties, Minnesota

ISSUE DATE: February 24, 2023

DOCKET NO. IP-6981/CN-20-865

DOCKET NO. IP-6981/WS-20-866

DOCKET NO. IP-6981/TL-20-867

ORDER ISSUING PRELIMINARY  
DRAFT SITE PERMIT, AUTHORIZING  
ADVISORY TASK FORCE, AND  
VARYING RULE

**PROCEDURAL HISTORY**

On May 7, 2021, Dodge County Wind, LLC (DCW or the Applicant) filed its Petition for an Exemption from Certain Certificate of Need Application Requirements and Notice Plan.

On July 13, 2021, the Commission approved the Applicant's data exemption requests with conditions.

On July 21, 2021, the Commission approved the Applicant's proposed notice plan.

On September 14, 2021, DCW filed applications for a certificate of need, a large wind energy conversion system (LWECS) site permit, and a high-voltage transmission line (HVTL) route permit for the proposed up to 259 megawatt (MW) Dodge County Wind project and approximately 26.8-mile 161 kilovolt (kV) transmission line to be located in Dodge, Mower, and Steele Counties (the Project).

On January 12, 2022, DCW filed amended applications for a certificate of need and site permit.

On January 14, 2022, DCW filed an amended route permit application.

On March 8, 2022, the Commission accepted DCW's applications as substantially complete.<sup>1</sup>

---

<sup>1</sup> *In the Matter of the Application of Dodge County Wind, LLC for a Certificate of Need, a Site Permit, and a Route Permit for the up to 259 MW Large Wind Energy Conversion System and Associated 161 kV*

Additionally, among other things, the Commission's March 8 order:

- authorized the use of the informal review process under Minn. R. 7829.1200;
- authorized use of joint proceedings to evaluate the applications; including combined environmental review of the certificate of need and HVTL route permit applications to the extent practicable, including the preparation of an Environmental Assessment (EA) in lieu of an Environmental Report;
- requested that an administrative law judge (ALJ) from the Office of Administrative Hearings (OAH) preside over a public hearing under the Commission's Summary Proceeding process; and
- requested that the ALJ (1) establish the types of filings necessary to facilitate proper record development and a schedule for submitting those filings through a prehearing conference in accordance with Minn. R. 1405.1100, as determined appropriate; and (2) prepare a report setting forth findings of fact, conclusions of law, and recommendations on the merits of the large wind energy conversion system, high voltage transmission line, and certificate of need applications, and provide recommendations, if any, on conditions and provisions of the proposed site permit, route permit, and certificate of need.

On May 10 and 11, 2022, Commission staff and Department of Commerce, Energy Environmental Review and Analysis (Department or EERA) staff held joint public information and EA scoping meetings.

By May 25, 2022, written comments regarding the Project were filed by the following:<sup>2</sup>

- The International Union of Operating Engineers Local 49 (IUOE Local 49) and the North Central and States Regional Council of Carpenters (NCSRCC), jointly;
- Minnesota Department of Transportation (MnDOT);
- Clean Grid Alliance (CGA);
- LIUNA Minnesota & North Dakota;
- Minnesota Conservative Energy Forum (MnCEF);
- Renewable Energy Services;
- U.S. Fish and Wildlife Service;
- Dodge County;
- Mower County;
- Minnesota Pollution Control Agency (MPCA);
- Clean Energy Economy Minnesota (CEEM);
- Minnesota Land & Liberty Coalition;
- Department of Natural Resources (DNR)
- local businesses; and

---

*Transmission Line in Dodge, Mower and Steele Counties, Minnesota*, Docket Nos. IP-6981/CN-20-865, IP-6981/WS-20-866, IP-6981/TL-20-867, Order (March 8, 2022).

<sup>2</sup> The Commission received written comments from members of the public through December 23, 2022.

- several citizens, including but not limited to nearby residents.

On June 1, 2022, EERA filed public scoping comments it had received during the written comment period.

On June 6, 2022, Dodge County requested a contested case proceeding.

On June 30, 2022, EERA filed a Dodge County Wind Project scoping survey report.

On July 29, 2022, DCW filed its response to comments received during the scoping comment period.<sup>3</sup>

On August 3, 2022, the EERA requested additional information from DCW on the additional route segment alternatives proposed in the Applicant's July 29, 2022 filing.

On August 22, 2022, DCW filed its response to EERA's request for additional information.

On August 31, 2022, the Commission and EERA issued a joint notice extending the public scoping comment period until September 21, 2022, to provide an opportunity for people to comment on the alternative route segments proposed by DCW.

By the end of the extended comment period on September 21, 2022, the Commission received written comments from approximately 50 commenters representing individuals, trade and business associations, unions, advocacy groups, federal and state agencies, and local governments.

On September 28, 2022, Dodge County filed supplemental comments.

On November 9, 2022, EERA filed a summary of the EA scoping process and a preliminary draft site permit incorporating site permit conditions recommended during the scoping comment period.

On November 18, 2022, Sargeant Township filed comments.

On January 9, 2023, the EERA filed comments stating that it was unable to recommend a task force charge based on unresolved issues related to the Applicant's Proposed Route and proposed route segment alternatives.

On January 11, 2023, the matter came before the commission.

---

<sup>3</sup> DCW also stated that it did not object to a contested case hearing, did not support the authorization of an advisory task force, and proposed three additional route segment alternatives for the 161 kV HVTL in response to scoping comments recommending that the proposed HVTL be located off public road rights-of-way.

## **FINDINGS AND CONCLUSIONS**

### **I. The Dodge County Wind Project**

DCW<sup>4</sup> proposes to construct and operate an up to 259 MW wind farm in Dodge and Steele counties and to connect the wind farm to the grid by constructing approximately 26.8 miles of new 161 kV HVTL in Dodge and Mower counties.

The wind farm would include up to 79 turbines and associated facilities, including a collector substation, collection lines, an operation and maintenance building, a permanent meteorological tower, and gravel access roads.

DCW proposes to connect the wind farm to the electrical grid through approximately 27 miles of new 161 kV HVTL between the new project substation within the wind farm site and Great River Energy's existing Pleasant Valley Substation, located in Pleasant Valley Township in Mower County.<sup>5</sup> The proposed route of the transmission lines traverses Ripley, Hayfield, Ashland, and Vernon townships in Dodge County, and Sargeant, Waltham, and Pleasant Valley townships in Mower County.

### **II. Summary of Scoping Comments**

Scoping comments received from the Dodge County Board, highway engineers from Dodge and Mower County, and many members of the public highlighted challenges with the location of the proposed route within county and township road rights-of-way (ROWs).

The Dodge County engineer stated that the proposed location of the HVTL within public road ROW is unfeasible due to the number of poles that would be in or near the ditch bottom, reducing drainage flow and increasing sedimentation and resulting in additional maintenance provided by the county. Similarly, Mower County raised concerns about whether the structures can be safely accommodated within the road ROW.

Comments also addressed the availability and suitability of other site or transmission alternatives including undergrounding the HVTL, whether valuable farmland should be used for power generation or transmission, turbine setbacks from residences, noise, decommissioning, the status of DCW's landowner agreements, impacts to livestock through stray voltage, concerns with electromagnetic fields, human health impacts, availability of emergency air evacuation services within and adjacent to the wind site, visual impacts, limitation on aerial spraying and resulting lost agricultural productivity, impacts to property values, impacts to wildlife, and impacts to calcareous fens.

On May 25, 2022, DNR filed comments regarding the EA and the draft site permit, and proposed two additional route segment alternatives for consideration.

---

<sup>4</sup> DCW, a wholly-owned subsidiary of NextEra Energy Resources, LLC, is an independent power producer.

<sup>5</sup> DCW has executed a 30-year power purchase agreement with Great River Energy for the entire output of the Project

On July 29, 2022, DCW filed its response to scoping comments. DCW stated that it was coordinating with landowners adjacent to county roadways along the Proposed Route ROW to obtain private land easements and proposed three route segment alternatives using private land easements.

### **III. Draft Site Permit**

DCW filed its site permit application under Minn. Stat. ch. 216F and Minn. R. ch. 7854, which require a site permit to construct a large wind energy conversion system. A “large wind energy conversion system” is defined as any combination of wind energy generation facilities with a combined nameplate capacity of 5,000 kilowatts or more.<sup>6</sup> The Project falls within that definition and, therefore, requires a site permit.

Under Minn. R. 7854.0800, subp. 1, after accepting an application, the Commission must make a preliminary determination on whether a site permit may be issued, and if so, must then issue a draft site permit for public comment. Issuing a draft site permit does not confer authority to construct an LWECS. The Commission may amend the draft site permit in any respect before final issuance or may deny the site permit.

#### **A. Comments**

EERA filed a preliminary draft site permit for Commission consideration and recommended that the Commission issue the draft site permit. The draft included modifications to the sample draft site permit to incorporate project-specific conditions that reflect comments received during the scoping process and other technical updates.

EERA also proposed a special condition requiring an independent third-party monitor. EERA explained that this special condition is consistent with recently issued LWECS site permits and with DNR recommendations. EERA noted that the scoping comments identified several issues that require further development such as consistency with Dodge County setback requirements, shadow flicker, potential impacts to emergency response, and potential impacts to Rice Lake State Park.

#### **B. Commission Action**

The Commission has reviewed the preliminary draft site permit proposed by EERA and appreciates the input of all who offered comments in this matter. The preliminary draft site permit identifies the permittee, describes the proposed project, and includes proposed permit conditions, satisfying the requirements of Minn. R. 7854.0800, subp. 1.

The Commission finds that the draft site permit proposed by EERA provides a sound basis for DCW and commenters to develop their analysis of the Project. The Commission will therefore issue the draft permit and make it available for public comment in accordance with Minn. R. 7854.0900.<sup>7</sup>

---

<sup>6</sup> Minn. Stat. § 216F.01, subd. 2; Minn. R. 7854.0100, subp. 7.

<sup>7</sup> Under Minn. R. 7829.3200, the Commission must grant a variance to its rules if it determines that (1) enforcement of the rule would impose an excessive burden upon the applicant or others affected by the

## **IV. HVTL Route Permit**

Under Minnesota Statute 216E, no person may construct a high voltage transmission line in Minnesota without a route permit from the Commission.<sup>8</sup> As proposed, the transmission line will consist of approximately 27 miles of new 161 kV HVTL and therefore requires a route permit from the Commission.

### **A. Positions of the Parties**

#### **1. Advisory Task Force**

Several commenters requested appointment of an advisory task force to assist in identifying environmental issues and impacts and potential mitigation measures. Commenters identified several issues for the advisory task force to address including the placement of the transmission poles within road ROWs, ensuring that all human and environmental impacts are identified and considered, tribal consultation, identification of existing transmission infrastructure, impacts to wildlife, landowner notification, impacts to emergency services, aesthetic impacts, and consideration of alternative route segments proposed by DNR and DCW.

EERA noted that the scoping comments identified several legal and technical issues related to the HVTL that may be beyond the scope of what might reasonably be asked of an advisory task force. EERA stated that whether the proposed transmission line can be located within county and township ROW is an unresolved legal issue, and whether it could be located in a manner that does not interfere with “the safety and convenience of ordinary travel” is an unresolved technical issue.

DCW argued that establishment of an advisory task force for the Project is not necessary because the issues raised by commenters could be addressed in a contested case proceeding.

#### **2. Contested Case Proceeding**

Several commenters requested a contested case proceeding. Commenters identified several contested issues including whether Dodge County has the authority to permit private utilities in a

---

rule, (2) granting the variance would not adversely affect the public interest, and (3) granting the variance would not conflict with standards imposed by law.

Minn. R. 7854.0800, subp. 1, directs the Commission to make a preliminary determination on whether to issue a site permit within 45 days of accepting an application. To ensure sufficient time to accommodate public input, the Commission will vary the 45-day timeline, making the following findings:

1. Enforcing the 45-day timeline would impose an excessive burden on the public, on parties to the proceeding, and on the Commission, by jeopardizing the thoroughness of the Commission's decision-making process.
2. Varying the 45-day timeline would not adversely affect the public interest, and would in fact serve the public interest by protecting the Commission's decision-making process.
3. Varying the 45-day timeline would not conflict with any other standards imposed by law.

<sup>8</sup> Minn. Stat. § 216E.01, subd. 4.

public road ROW, the need for the Project, the standards used to permit the wind facility, and the accuracy of the information contained in the applications.

DCW did not oppose a contested case proceeding.

EERA recommended the Commission refer the issue of whether the proposed HVTL can be located in a manner that is consistent with public safety and convenience, does not unreasonably interfere with drainage, and does not place an undue burden on local government and landowners to the OAH for a contested case proceeding.

## **B. Commission Action**

The Commission recognizes that a contested case proceeding can aid in fully developing the record and provide the Applicant and interested stakeholders with the opportunity to file testimony to address the issues raised by stakeholders including Dodge County, Mower County, the various impacted townships, and other commenters. The Commission agrees with EERA that local governments and citizens raised valid concerns about the viability of the Proposed Route and the proposed route segment alternatives during the scoping process.

Referring this matter to the OAH would be premature at this stage in the proceedings in light of the comments on safety, technical, and ROW issues. However, in anticipation of a possible referral for a contested case to OAH, and to provide clarity to the ALJ as to the specific questions to be addressed in a contested case, the Commission will require DCW to file proposed wording for a referral of the legal, land use, engineering, and safety issues related to siting transmission facilities within road ROW of the state, counties, and townships.

The Commission finds that the authorization of an advisory task force to identify potential impacts and mitigation strategies, including route alternatives and route segment alternatives to be evaluated in the EA is reasonable and in the public interest and will aid in the EA scoping process for the Project. Accordingly, the Commission will authorize the Department to establish an advisory task force for the HVTL route.

In addition, to aid in record development, the Commission requests that EERA file a proposed draft route permit.

## **ORDER**

1. The Commission hereby issues the preliminary draft site permit as attached, incorporating the proposals by EERA.
2. The Commission requests that EERA file a proposed draft route permit within 20 days. To allow for public input, the draft route(s) must include all alternative routes proposed by all parties to date, along with applicable rights-of-way, widths, and alignments for each route segment. The Commission requests that EERA identify in the draft route permit the “potentially substantial post permit review” of the route alignment referred to in its November 9, 2022 comments. The Commission delegates authority to the Executive Secretary to establish the timeframe for reply comments.

3. The Commission authorizes the Department to establish an advisory task force for the HVTL route and delegates the authority to the Commissioner of Commerce to approve the deadlines, composition, and charge of the advisory task force. The route alternative scoping decisions will be delayed until the Commission considers the issue upon completion of the advisory task force's charge within the deadlines established by the Commissioner of Commerce.
4. In anticipation of a possible referral for a contested case to OAH, the applicant shall, within 10 days, file proposed language for a referral of the legal, land use, engineering and safety issues related to siting transmission facilities within road right of way of the state (MnDOT), counties and townships. The issue referral should help provide clarity to the ALJ as to the specific questions to be addressed in the contested case. The Commission delegates authority to the Executive Secretary to establish the timeframe for reply comments.
5. The Commission varies Minn. Rule 7854.0800 to allow for issuance of a draft site permit after 45 days from determination of application completeness.
6. This order shall become effective immediately.

BY ORDER OF THE COMMISSION



Will Seuffert  
Executive Secretary



This document can be made available in alternative formats (e.g., large print or audio) by calling 651.296.0406 (voice). Persons with hearing or speech impairment may call using their preferred Telecommunications Relay Service or email [consumer.puc@state.mn.us](mailto:consumer.puc@state.mn.us) for assistance.



**STATE OF MINNESOTA PUBLIC UTILITIES COMMISSION**

**SITE PERMIT FOR A  
LARGE WIND ENERGY CONVERSION SYSTEM**

**IN  
DODGE AND STEELE COUNTIES**

**ISSUED TO  
DODGE COUNTY WIND, LLC**

**PUC DOCKET NO. IP-6981/WS-20-866**

In accordance with the requirements of Minnesota Statutes Chapter 216F and Minnesota Rules Chapter 7854 this site permit is hereby issued to:

**DODGE COUNTY WIND, LLC**

The Permittee is authorized by this site permit to construct and operate a Large Wind Energy Conversion System of up to 259 megawatts (MW) consisting of up to 79 turbines. The Large Wind Energy Conversion System and associated facilities shall be built within the site identified in this permit and as portrayed on the site maps and in compliance with the conditions specified in this permit.

This site permit shall expire thirty (30) years from the date of this approval.

Approved and adopted this \_\_\_\_ day of \_\_\_\_\_

BY ORDER OF THE COMMISSION

---

Will Seuffert,  
Executive Secretary

## CONTENTS

1	SITE PERMIT .....	1
1.1	Preemption .....	1
2	PROJECT DESCRIPTION.....	1
2.1	Associated Facilities .....	1
2.2	Project Location .....	1
3	DESIGNATED SITE.....	2
3.1	Turbine Layout .....	2
4	SETBACKS AND SITE LAYOUT RESTRICTIONS .....	2
4.1	Wind Access Buffer .....	2
4.2	Residences .....	3
4.3	Noise .....	3
4.4	Roads.....	3
4.5	Public Lands .....	3
4.6	Wetlands .....	3
4.7	Native Prairie .....	4
4.8	Sand and Gravel Operations .....	4
4.9	Wind Turbine Towers.....	4
4.10	Turbine Spacing.....	5
4.11	Meteorological Towers.....	5
4.12	Aviation .....	5
4.13	Footprint Minimization.....	5
5	GENERAL CONDITIONS.....	5
5.1	Permit Distribution .....	6
5.2	Access to Property .....	6
5.3	Construction and Operation Practices.....	6
5.3.1	Field Representative .....	6
5.3.2	Site Manager .....	7
5.3.3	Employee Training and Education of Permit Terms and Conditions.....	7
5.3.4	Public Services and Public Utilities.....	7
5.3.5	Topsoil Protection .....	7
5.3.6	Soil Compaction .....	7
5.3.7	Soil Erosion and Sediment Control .....	8
5.3.8	Wetlands and Water Resources .....	8

5.3.9	Vegetation Removal.....	8
5.3.10	Application of Pesticides.....	9
5.3.11	Invasive Species .....	9
5.3.12	Noxious Weeds .....	9
5.3.13	Public Roads .....	9
5.3.14	Turbine Access Roads .....	10
5.3.15	Private Roads .....	10
5.3.16	Archaeological and Historic Resources.....	10
5.3.17	Interference .....	11
5.3.18	Livestock Protection.....	11
5.3.19	Fences .....	11
5.3.20	Drainage Tiles.....	11
5.3.21	Equipment Storage .....	12
5.3.22	Restoration.....	12
5.3.23	Cleanup .....	12
5.3.24	Pollution and Hazardous Waste.....	12
5.3.25	Damages.....	12
5.3.26	Public Safety.....	12
5.3.27	Tower Identification.....	13
5.3.28	Federal Aviation Administration Lighting .....	13
5.4	Communication Cables .....	13
5.5	Electrical Collector and Feeder Lines.....	13
5.6	Other Requirements .....	14
5.6.1	Safety Codes and Design Requirements.....	14
5.6.2	Other Permits and Regulations.....	14
6	SPECIAL CONDITIONS.....	14
6.1	Independent Third-Party Monitor .....	14
6.2	Wildlife-Friendly Erosion Control.....	15
6.3	Substation Lighting .....	15
6.4	Dust Control .....	15
6.5	Snowmobile Trails.....	15
7	SURVEYS AND REPORTING.....	15
7.1	Biological and Natural Resource Inventories.....	15
7.2	Shadow Flicker .....	15
7.3	Wake Loss Studies.....	16
7.4	Noise Studies.....	16
7.5	Avian and Bat Protection .....	16

7.5.1	Operational Phase Fatality Monitoring.....	16
7.5.2	Avian and Bat Protection Plan .....	16
7.5.3	Quarterly Incident Reports .....	17
7.5.4	Immediate Incident Reports .....	17
7.5.5	Turbine Operational Curtailment .....	18
8	AUTHORITY TO CONSTRUCT LWECS .....	18
8.1	Wind Rights .....	18
8.2	Power Purchase Agreement .....	18
8.3	Failure to Commence Construction .....	19
9	COMPLAINT PROCEDURES.....	19
10	COMPLIANCE REQUIREMENTS .....	19
10.1	Pre-Construction Meeting .....	19
10.2	Pre-Operation Meeting.....	19
10.3	Site Plan.....	20
10.4	Status Reports.....	20
10.5	Labor Statistic Reporting.....	21
10.6	In-Service Date .....	21
10.7	As-Builts .....	21
10.8	GPS Data.....	21
10.9	Project Energy Production .....	21
10.10	Wind Resource Use.....	22
10.11	Emergency Response.....	22
10.12	Extraordinary Events.....	22
11	DECOMMISSIONING, RESTORATION, AND ABANDONMENT .....	23
11.1	Decommissioning Plan .....	23
11.2	Site Restoration.....	23
11.3	Abandoned Turbines.....	24
12	COMMISSION AUTHORITY AFTER PERMIT ISSUANCE .....	24
12.1	Final Boundaries.....	24
12.2	Expansion of Site Boundaries.....	24
12.3	Periodic Review.....	24
12.4	Modification of Conditions .....	24
12.5	More Stringent Rules .....	25
12.6	Right of Entry .....	25
12.7	Proprietary Information.....	25

13	PERMIT AMENDMENT .....	25
14	TRANSFER OF PERMIT .....	26
15	REVOCATION OR SUSPENSION OF PERMIT .....	27
16	EXPIRATION DATE .....	27

#### ATTACHMENTS

Attachment 1 – Complaint Handling Procedures for Permitted Energy Facilities

Attachment 2 – Compliance Filing Procedure for Permitted Energy Facilities

Attachment 3 – Site Maps

DRAFT SITE PERMIT

## **DRAFT SITE PERMIT**

Dodge County Wind Project, PUC Docket No. IP-6981/WS-20-866

### **1 SITE PERMIT**

The Minnesota Public Utilities Commission (Commission) hereby issues this site permit to Dodge County Wind, LLC (Permittee). This permit authorizes the Permittee to construct and operate the Dodge County Wind Project a 259 megawatt (MW) nameplate capacity Large Wind Energy Conversion System (LWECS) and associated facilities in Dodge and Steele counties. The LWECS and associated facilities shall be built within the site identified in this permit and as identified in the attached site maps, hereby incorporated into this document.

#### **1.1 Preemption**

Pursuant to Minn. Stat. § 216F.07, this permit shall be the sole site approval required for the location, construction, and operation of this project and this permit shall supersede and preempt all zoning, building, and land use rules, regulations, and ordinances adopted by regional, county, local, and special purpose governments.

### **2 PROJECT DESCRIPTION**

The Dodge County Wind Project will be an up to 259 MW nameplate capacity LWECS in Dodge and Steele counties in Minnesota. The LWECS will consist of up to install 68 General Electric (GE) 3.4 MW wind turbines and 11 GE 2.52 MW wind turbines.

All of the turbines will utilize low-noise trailing edge (LNTE) serrations on the turbine blades to reduce sound impacts. LNTE serrations will be the same color as the turbine blades and cover approximately 20-30 percent of the trailing edge of the outboard blade length.

#### **2.1 Associated Facilities**

Associated facilities include the following: a project substation, an operation and maintenance (O&M) facility, up to x permanent meteorological towers, underground electrical collector lines, Aircraft Detection Lighting System (ADLS) towers, and permanent all-weather gravel access roads.

#### **2.2 Project Location**

The project is located in the following:

<b>County</b>	<b>Township Name</b>	<b>Township</b>	<b>Range</b>	<b>Sections</b>
Dodge	Ashland	106N	17W	7,18, 19
	Claremont	107N	18W	31-35
	Ripley	106N	18W	2-24, 29-32

**DRAFT SITE PERMIT**

Dodge County Wind Project, PUC Docket No. IP-6981/WS-20-866

County	Township Name	Township	Range	Sections
	Westfield	105N	18W	5, 8
Steele	Aurora	106N	19W	1-4, 11-13, 24, 25, 36
	Havana	107N	19W	25-28, 33-36

**3 DESIGNATED SITE**

The site designated by the Commission for the Dodge County Wind Project is depicted on the site maps attached to this permit. The project area encompasses approximately 28,350 acres. Upon completion, the project will occupy no more than 62 acres of land converted to wind turbines and associated facilities approved by this permit. Within the project boundary, the LWECS and associated facilities shall be located on lands for which the Permittee has obtained wind rights.

**3.1 Turbine Layout**

The preliminary wind turbine and associated facility layouts are shown on the site maps attached to this permit. The preliminary layout represents the approximate location of wind turbines and associated facilities within the project boundary and identifies a layout that seeks to minimize the overall potential human and environmental impacts of the project, which were evaluated in the permitting process.

The final layout depicting the location of each wind turbine and associated facility shall be located within the project boundary. The project boundary serves to provide the Permittee with the flexibility to make minor adjustments to the preliminary layout to accommodate requests by landowners, local government units, federal and state agency requirements, and unforeseen conditions encountered during the detailed engineering and design process. Any modification to the location of a wind turbine and associated facility depicted in the preliminary layout shall be done in such a manner to have comparable overall human and environmental impacts and shall be specifically identified in the site plan pursuant to Section 10.3.

**4 SETBACKS AND SITE LAYOUT RESTRICTIONS****4.1 Wind Access Buffer**

Wind turbine towers shall not be placed less than five rotor diameters on the prevailing wind directions and three rotor diameters on the non-prevailing wind directions from the perimeter of the property where the Permittee does not hold the wind rights, without the approval of the Commission. This section does not apply to public roads and trails.

## **DRAFT SITE PERMIT**

Dodge County Wind Project, PUC Docket No. IP-6981/WS-20-866

### **4.2 Residences**

Wind turbine towers shall not be located closer than 1,000 feet from all residences or the distance required to comply with the noise standards pursuant to Minn. R. 7030.0040, established by the Minnesota Pollution Control Agency (MPCA), whichever is greater.

### **4.3 Noise**

The wind turbine towers shall be placed such that the Permittee shall, at all times, comply with noise standards established by the MPCA as of the date of this permit and at all appropriate locations. The noise standards are found in Minnesota Rules Chapter 7030. Turbine operation shall be modified, or turbines shall be removed from service if necessary to comply with these noise standards. The Permittee or its contractor may install and operate turbines as close as the minimum setback required in this permit, but in all cases shall comply with MPCA noise standards. The Permittee shall be required to comply with this condition with respect to all homes or other receptors in place as of the time of construction, but not with respect to such receptors built after construction of the towers.

### **4.4 Roads**

Wind turbines and meteorological towers shall not be located closer than 250 feet from the edge of the nearest public road right-of-way.

### **4.5 Public Lands**

Wind turbines and associated facilities including foundations, access roads, underground cable, and transformers, shall not be located in publicly-owned lands that have been designated for recreational or conservation purposes, including, but not limited to, Waterfowl Production Areas, State Wildlife Management Areas, Scientific and Natural Areas or county parks, except in the event that the public entity owning those lands enters into a land lease and easement with the Permittee. Wind turbine towers shall also comply with the setbacks of Section 4.1.

### **4.6 Wetlands**

Wind turbines and associated facilities including foundations, access roads, underground cable and transformers, shall not be placed in public waters wetlands, as shown on the public water inventory maps prescribed by Minnesota Statutes Chapter 103G, except that electric collector or feeder lines may cross or be placed in public waters or public waters wetlands subject to permits and approvals by the Minnesota Department of Natural Resources (DNR) and the United States Army Corps of Engineers (USACE), and local units of government as implementers of the Minnesota Wetlands Conservation Act.



## **DRAFT SITE PERMIT**

Dodge County Wind Project, PUC Docket No. IP-6981/WS-20-866

### **4.7 Native Prairie**

Wind turbines and associated facilities including foundations, access roads, collector and feeder lines, underground cable, and transformers shall not be placed in native prairie, as defined in Minn. Stat. § 84.02, subd. 5, unless addressed in a prairie protection and management plan and shall not be located in areas enrolled in the Native Prairie Bank Program. Construction activities, as defined in Minn. Stat. § 216E.01, shall not impact native prairie unless addressed in a Prairie Protection and Management Plan.

The Permittee shall prepare a Prairie Protection and Management Plan in consultation with the DNR if native prairie, as defined in Minn. Stat. § 84.02, subd. 5, is identified within the site boundaries. The Permittee shall file the plan 30 days prior to submitting the site plan required by Section 10.3 of this permit. The plan shall address steps that will be taken to avoid impacts to native prairie and mitigation to unavoidable impacts to native prairie by restoration or management of other native prairie areas that are in degraded condition, by conveyance of conservation easements, or by other means agreed to by the Permittee, the DNR, and the Commission.

### **4.8 Sand and Gravel Operations**

Wind turbines and all associated facilities, including foundations, access roads, underground cable, and transformers shall not be located within active sand and gravel operations, unless otherwise negotiated with the landowner.

### **4.9 Wind Turbine Towers**

Structures for wind turbines shall be self-supporting tubular towers. The towers may be up to 98 meters (322 feet) above grade measured at hub height. The wind turbine specifications in the table below were provided in the Permittee's January 12, 2022, Amended Application for a Large Wind Energy Conversion System Site Permit.

<b>Design Feature</b>	<b>GE 3.4 MW 81 M</b>	<b>GE 3.4 MW 98 M</b>	<b>GE 2.52 MW 90 M</b>
Capacity	3.4 MW	3.4 MW	2.52 MW
Total Height (ground to fully extended blade tip)	151 meters (495 feet),	168 meters (551 feet)	148.3 meters (486.5 feet)
Hub Height	81 meters (292 feet)	98 meters (322 feet)	90 meters (295 feet)
Rotor Diameter	140 meters (459 feet)	140 meters (459 feet)	116.5 meters (382 feet)

## **DRAFT SITE PERMIT**

Dodge County Wind Project, PUC Docket No. IP-6981/WS-20-866

### **4.10 Turbine Spacing**

The turbine towers shall be constructed within the site boundary as shown on the site maps. The turbine towers shall be spaced no closer than three rotor diameters in the non-prevailing wind directions and five rotor diameters on the prevailing wind directions. If required, up to 20 percent of the towers may be sited closer than the above spacing, but the Permittee shall minimize the need to site the turbine towers closer.

### **4.11 Meteorological Towers**

Permanent towers for meteorological equipment shall be free standing. Permanent meteorological towers shall not be placed less than 250 feet from the edge of the nearest public road right-of-way and from the boundary of the Permittee's site control, or in compliance with the county ordinance regulating meteorological towers in the county the tower is built, whichever is more restrictive. Meteorological towers shall be placed on property the Permittee holds the wind or other development rights.

Meteorological towers shall be marked as required by the Federal Aviation Administration (FAA). There shall be no lights on the meteorological towers other than what is required by the FAA. This restriction shall not apply to infrared heating devices used to protect the wind monitoring equipment.

### **4.12 Aviation**

The Permittee shall not place wind turbines or associated facilities in a location that could create an obstruction to navigable airspace of private and public airports (as defined in Minn. R. 8800.0100, subp. 24(a) and 24(b)) in Minnesota, adjacent states, or provinces. The Permittee shall apply the minimum obstruction clearance for private airports pursuant to Minn. R. 8800.1900, subp. 5. Setbacks or other limitations shall be followed in accordance with the Minnesota Department of Transportation (MnDOT), Department of Aviation, and the FAA. The Permittee shall notify owners of all known airports within six miles of the project's anticipated construction start date at least 14 days prior to the pre-construction meeting.

### **4.13 Footprint Minimization**

The Permittee shall design and construct the LWECS so as to minimize the amount of land that is impacted by the LWECS. Associated facilities in the vicinity of turbines such as electrical/electronic boxes, transformers, and monitoring systems shall, to the greatest extent feasible, be mounted on the foundations used for turbine towers or inside the towers unless otherwise negotiated with the affected landowner.

## **5 GENERAL CONDITIONS**

## **DRAFT SITE PERMIT**

Dodge County Wind Project, PUC Docket No. IP-6981/WS-20-866

The Permittee shall comply with the following conditions during construction and operation of the LWECS and associated facilities over the life of this permit.

### **5.1 Permit Distribution**

Within 30 days of permit issuance, the Permittee shall send a copy of the permit and the complaint procedures to any regional development commission, county auditor and environmental office, and city and township clerk in which any part of the site is located.

Within 30 days of permit issuance, the Permittee shall provide all affected landowners with a copy of this permit and the complaint procedures. In no case shall the landowner receive this site permit and complaint procedures less than five days prior to the start of construction on their property. An affected landowner is any landowner or designee that is within or adjacent to the permitted site.

### **5.2 Access to Property**

The Permittee shall contact landowners prior to entering private property or conducting maintenance within the site, unless otherwise negotiated with the affected landowner.

### **5.3 Construction and Operation Practices**

The Permittee shall comply with the construction practices, operation and maintenance practices, and material specifications described in the January 12, 2022, Amended Application for a Large Wind Energy Conversion System Site Permit, and the record of the proceedings unless this permit establishes a different requirement in which case this permit shall prevail.

#### **5.3.1 Field Representative**

The Permittee shall designate a field representative responsible for overseeing compliance with the conditions of this permit during construction of the project. This person shall be accessible by telephone or other means during normal business hours throughout site preparation, construction, cleanup, and restoration.

The Permittee shall file with the Commission the name, address, email, phone number, and emergency phone number of the field representative 14 days prior to the pre-construction meeting. The Permittee shall provide the field representative's contact information to affected landowners, residents, local government units and other interested persons 14 days prior to the pre-construction meeting. The Permittee may change the field representative at any time upon notice to the Commission, affected landowners, local government units and other interested persons.

## **DRAFT SITE PERMIT**

Dodge County Wind Project, PUC Docket No. IP-6981/WS-20-866

### **5.3.2 Site Manager**

The Permittee shall designate a site manager responsible for overseeing compliance with the conditions of this permit during the commercial operation and decommissioning phases of the project. This person shall be accessible by telephone or other means during normal business hours for the life of this permit.

The Permittee shall file with the Commission the name, address, email, phone number, and emergency phone number of the site manager 14 days prior to the pre-operation meeting for the facility. The Permittee shall provide the site manager's contact information to affected landowners, residents, local government units and other interested persons 14 days prior to the pre-operation meeting for the facility. The Permittee may change the site manager at any time upon notice to the Commission, affected landowners, local government units and other interested persons.

### **5.3.3 Employee Training and Education of Permit Terms and Conditions**

The Permittee shall inform and educate all employees, contractors, and other persons involved in the construction and ongoing operation of the LWECS of the terms and conditions of this permit.

### **5.3.4 Public Services and Public Utilities**

During construction, the Permittee shall minimize any disruption to public services and public utilities. To the extent disruptions to public services or public utilities occur these will be temporary, and the Permittee will restore service promptly. Where any impacts to utilities have the potential to occur the Permittee will work with both landowners and local agencies to determine the most appropriate mitigation measures if not already considered as part of this permit.

### **5.3.5 Topsoil Protection**

The Permittee shall implement measures to protect and segregate topsoil from subsoil on all lands unless otherwise negotiated with the affected landowner.

### **5.3.6 Soil Compaction**

The Permittee shall implement measures to minimize soil compaction of all lands during all phases of the project's life and shall confine compaction to as small an area as practicable. Soil decompaction measures shall be utilized on all lands utilized for project construction and travelled on by cranes, heavy equipment, and heavy trucks, even when soil compaction minimization measures are used.

## **DRAFT SITE PERMIT**

Dodge County Wind Project, PUC Docket No. IP-6981/WS-20-866

### **5.3.7 Soil Erosion and Sediment Control**

The Permittee shall implement those erosion prevention and sediment control practices recommended by the MPCA Construction Stormwater Program. If construction of the facility disturbs more than one acre of land, or is sited in an area designated by the MPCA as having potential for impacts to water resources, the Permittee shall obtain a National Pollutant Discharge Elimination System/State Disposal System (NPDES/SDS) Construction Stormwater Permit from the MPCA that provides for the development of a Stormwater Pollution Prevention Plan (SWPPP) that describes methods to control erosion and runoff.

The Permittee shall implement reasonable measures to minimize erosion and sedimentation during construction and shall employ perimeter sediment controls, protect exposed soil by promptly planting, seeding, using erosion control blankets and turf reinforcement mats, stabilizing slopes, protecting storm drain inlets, protecting soil stockpiles, and controlling vehicle tracking. Contours shall be graded as required so that all surfaces provide for proper drainage, blend with the natural terrain, and are left in a condition that will facilitate re-vegetation and prevent erosion. All areas disturbed during construction of the facilities shall be returned to pre-construction conditions.

### **5.3.8 Wetlands and Water Resources**

Construction in wetland areas shall occur during frozen ground conditions to minimize impacts, to the extent feasible. When construction during winter is not possible, wooden or composite mats shall be used to protect wetland vegetation. Soil excavated from the wetlands and riparian areas shall be contained and managed in accordance with all applicable wetland permits. Wetlands and riparian areas shall be accessed using the shortest route possible in order to minimize travel through wetland areas and prevent unnecessary impacts.

Wetland and water resource areas disturbed by construction activities shall be restored to pre-construction conditions in accordance with the requirements of applicable state and federal permits or laws and landowner agreements. All requirements of the U.S. Army Corps of Engineers, Minnesota Department of Natural Resources, Minnesota Board of Soil and Water Resources, and local units of government shall be met.

### **5.3.9 Vegetation Removal**

The Permittee shall disturb or clear vegetation on the project site only to the extent necessary to assure suitable access for construction, and for safe operation and maintenance of the project. The Permittee shall minimize the number of trees removed in selecting the site layout specifically preserving to the maximum extent practicable windbreaks, shelterbelts, living snow fences, and other vegetation, to the extent that such actions do not violate sound engineering principles.

## **DRAFT SITE PERMIT**

Dodge County Wind Project, PUC Docket No. IP-6981/WS-20-866

### **5.3.10 Application of Pesticides**

The Permittee shall restrict pesticide use to those pesticides and methods of application approved by the Minnesota Department of Agriculture (MDA), DNR, and the U.S. Environmental Protection Agency (EPA). Selective foliage or basal application shall be used when practicable. All pesticides shall be applied in a safe and cautious manner so as not to damage adjacent properties including crops, orchards, tree farms, apiaries, or gardens. The Permittee shall contact the landowner or designee to obtain approval for the use of pesticide at least 14 days prior to any application on their property. The landowner may request that there be no application of pesticides on any part of the site within the landowner's property. The Permittee shall provide notice of pesticide application to affected landowners and known beekeepers operating apiaries within three miles of the project site at least 14 days prior to such application.

### **5.3.11 Invasive Species**

The Permittee shall employ best management practices to avoid the potential introduction and spread of invasive species on lands disturbed by project construction activities. The Permittee shall develop an Invasive Species Prevention Plan to prevent the introduction and spread of invasive species on lands disturbed by project construction activities and file with the Commission 14 days prior to the pre-construction meeting.

### **5.3.12 Noxious Weeds**

The Permittee shall take all reasonable precautions against the spread of noxious weeds during all phases of construction. When utilizing seed to establish temporary and permanent vegetative cover on exposed soil, the Permittee shall select site appropriate seed certified to be free of noxious weeds. The Permittee shall consult with landowners on the selection and use of seed for replanting. To the extent possible, the Permittee shall use native seed mixes.

### **5.3.13 Public Roads**

At least 14 days prior to the pre-construction meeting, the Permittee shall identify all state, county, or township roads that will be used for the project and shall notify the Commission and the state, county, or township governing body having jurisdiction over the roads to determine if the governmental body needs to inspect the roads prior to use of these roads. Where practical, existing roadways shall be used for all activities associated with the project. Where practical, all-weather roads shall be used to deliver cement, turbines, towers, assembled nacelles, and all other heavy components to and from the turbine sites.

The Permittee shall, prior to the use of such roads, make satisfactory arrangements (approved permits, written authorizations, road use agreements, development agreements, etc.) with the appropriate state, county, or township governmental body having jurisdiction over roads to be

## **DRAFT SITE PERMIT**

Dodge County Wind Project, PUC Docket No. IP-6981/WS-20-866

used for construction of the project, for maintenance and repair of roads that may be subject to increased impacts due to transportation of equipment and project components. The Permittee shall notify the Commission of such arrangements upon request.

### **5.3.14 Turbine Access Roads**

The Permittee shall construct the least number of turbine access roads necessary to safely and efficiently operate the project and satisfy landowner requests. Access roads shall be low profile roads so that farming equipment can cross them and shall be covered with Class 5 gravel or similar material. Access roads shall not be constructed across streams and drainage ditches without required permits and approvals. When access roads are constructed across streams, drainage ways, or drainage ditches, the access roads shall be designed and constructed in a manner so runoff from the upper portions of the watershed can readily flow to the lower portion of the watershed.

Any access roads that are constructed across streams or drainage ditches shall be designed and constructed in a manner that maintains existing fish passage. Access roads that are constructed across grassed waterways, which provide drainage for surface waters that are ephemeral in nature, are not required to maintain or provide fish passage. Access roads shall be constructed in accordance with all necessary township, county or state road requirements and permits.

The Permittee shall provide the local soil and water conservation district (SWCD) and participating landowners an opportunity to review and comment on access road plans in order to minimize the potential to pond and divert water creating gully erosion or the potential to cause damage or failure to existing conservation practices, such as terraces, sediment control basins or diversions prior to finalization and installation. The Permittee shall file documentation that this permit condition has been complied with at least 14 days prior to the pre-construction meeting.

### **5.3.15 Private Roads**

The Permittee shall promptly repair private roads or lanes damaged when moving equipment or when obtaining access to the site, unless otherwise negotiated with the affected landowner.

### **5.3.16 Archaeological and Historic Resources**

The Permittee shall make every effort to avoid impacts to identified archaeological and historic resources when constructing the facility. In the event that a resource is encountered, the Permittee shall consult with the State Historic Preservation Office (SHPO) and the State Archaeologist. Where feasible, avoidance of the resource is required. Where not feasible, mitigation must include an effort to minimize project impacts on the resource consistent with SHPO and State Archaeologist requirements.

## **DRAFT SITE PERMIT**

Dodge County Wind Project, PUC Docket No. IP-6981/WS-20-866

Prior to construction, workers shall be trained about the need to avoid cultural properties, how to identify cultural properties, and procedures to follow if undocumented cultural properties, including gravesites, are found during construction. If human remains are encountered during construction, the Permittee shall immediately halt construction at such location and promptly notify local law enforcement and the State Archaeologist. Construction at such location shall not proceed until authorized by local law enforcement and the State Archaeologist.

### **5.3.17 Interference**

At least 14 days prior to the pre-construction meeting, the Permittee shall submit to the Commission an assessment of television and radio signal reception, microwave signal patterns, and telecommunications in the project area. The assessment shall be designed to provide data that can be used in the future to determine whether the turbines and associated facilities are the cause of disruption or interference of television or radio reception, microwave patterns, or telecommunications in the event residents should complain about such disruption or interference after the turbines are placed in operation. The Permittee shall be responsible for alleviating any disruption or interference of these services caused by the turbines or any associated facilities.

The Permittee shall not operate the project so as to cause microwave, television, radio, telecommunications, or navigation interference in violation of Federal Communications Commission (FCC) regulations or other law. In the event the project or its operations cause such interference, the Permittee shall take timely measures necessary to correct the problem.

### **5.3.18 Livestock Protection**

The Permittee shall take precautions to protect livestock during all phases of the project's life.

### **5.3.19 Fences**

The Permittee shall promptly replace or repair all fences and gates removed or damaged during all phases of the project's life unless otherwise negotiated with the affected landowner. When the Permittee installs a gate where electric fences are present, the Permittee shall provide for continuity in the electric fence circuit.

### **5.3.20 Drainage Tiles**

The Permittee shall take into account, avoid, promptly repair or replace all drainage tiles broken or damaged during all phases of project's life unless otherwise negotiated with affected landowner.



## **DRAFT SITE PERMIT**

Dodge County Wind Project, PUC Docket No. IP-6981/WS-20-866

### **5.3.21 Equipment Storage**

The Permittee shall not locate temporary equipment staging areas on lands under its control unless negotiated with affected landowner. Temporary equipment staging areas shall not be located in wetlands or native prairie as defined in Sections 4.6 and 4.7.

### **5.3.22 Restoration**

The Permittee shall, as soon as practical following construction of each turbine, restore the areas affected by construction to the condition that existed immediately before construction began, to the extent possible. The time period to complete restoration may be no longer than 12 months after the completion of construction, unless otherwise negotiated with the affected landowner. Restoration shall be compatible with the safe operation, maintenance and inspection of the project. Within 60 days after completion of all restoration activities, the Permittee shall advise the Commission in writing of the completion of such activities.

### **5.3.23 Cleanup**

All waste and scrap that is the product of construction shall be removed from the site and all premises on which construction activities were conducted and properly disposed of upon completion of each task. Personal litter, including bottles, cans, and paper from construction activities shall be removed on a daily basis.

### **5.3.24 Pollution and Hazardous Waste**

All appropriate precautions to protect against pollution of the environment shall be taken by the Permittee. The Permittee shall be responsible for compliance with all laws applicable to the generation, storage, transportation, clean up and disposal of all wastes generated during construction and operation of the facility.

### **5.3.25 Damages**

The Permittee shall fairly restore or compensate landowners for damage to crops, fences, private roads and lanes, landscaping, drain tile, or other damages sustained during construction.

### **5.3.26 Public Safety**

The Permittee shall provide educational materials to landowners adjacent to the site and, upon request, to interested persons about the project and any restrictions or dangers associated with the project. The Permittee shall also provide any necessary safety measures such as warning signs and gates for traffic control or to restrict public access. The Permittee shall submit the

## **DRAFT SITE PERMIT**

Dodge County Wind Project, PUC Docket No. IP-6981/WS-20-866

location of all underground facilities, as defined in Minn. Stat. § 216D.01, subd. 11, to Gopher State One Call following the completion of construction at the site.

### **5.3.27 Tower Identification**

All turbine towers shall be marked with a visible identification number.

### **5.3.28 Federal Aviation Administration Lighting**

Towers shall be marked as required by the FAA. There shall be no lights on the towers other than what is required by the FAA. This restriction shall not apply to infrared heating devices used to protect the wind monitoring equipment.

The Permittee shall install and employ an FAA- approved lighting mitigation system, such as an aircraft detection lighting system (ADLS), light intensity dimming solution (LIDS), or other FAA- approved mitigation method. The Permittee shall describe the lighting mitigation system used for the project in its site plan.

## **5.4 Communication Cables**

The Permittee shall place all communication and supervisory control and data acquisition cables underground and within or adjacent to the land necessary for turbine access roads unless otherwise negotiated with the affected landowner.

## **5.5 Electrical Collector and Feeder Lines**

Collector lines that carry electrical power from each individual transformer associated with a wind turbine to an internal project interconnection point shall be buried underground. Collector lines shall be placed within or adjacent to the land necessary for turbine access roads unless otherwise negotiated with the affected landowner.

Feeder lines that carry power from an internal project interconnection point to the project substation or interconnection point on the electrical grid may be overhead or underground. Feeder line locations shall be negotiated with the affected landowner. Any overhead or underground feeder lines that parallel public roads shall be placed within the public rights-of-way or on private land immediately adjacent to public roads. If overhead feeder lines are located within public rights-of-way, the Permittee shall obtain approval from the governmental unit responsible for the affected right-of-way.

Collector and feeder line locations shall be located in such a manner as to minimize interference with agricultural operations including, but not limited to, existing drainage patterns, drain tile, future tiling plans, and ditches. Safety shields shall be placed on all guy

## **DRAFT SITE PERMIT**

Dodge County Wind Project, PUC Docket No. IP-6981/WS-20-866

wires associated with overhead feeder lines. The Permittee shall submit the engineering drawings of all collector and feeder lines in the site plan pursuant to Section 10.3.

### **5.6 Other Requirements**

#### **5.6.1 Safety Codes and Design Requirements**

The LWECS and associated facilities shall be designed to meet or exceed all relevant local and state codes, Institute of Electrical and Electronics Engineers, Inc. (IEEE) standards, the National Electric Safety Code (NESC), and North American Electric Reliability Corporation (NERC) requirements. The Permittee shall report to the Commission on compliance with these standards upon request.

#### **5.6.2 Other Permits and Regulations**

The Permittee shall comply with all applicable state rules and statutes. The Permittee shall obtain all required permits for the project and comply with the conditions of those permits unless those permits conflict with or are preempted by federal or state permits and regulations. A list of the permits known to be required is included in the site permit application.

At least 14 days prior to the pre-construction meeting, the Permittee shall submit a filing with a detailed status update of all permits, authorizations, and approvals that have been applied for specific to the project. The detailed status update shall include the permitting agency or authority, the name of the permit, authorization, or approval being sought, contact person and contact information for the permitting agency or authority, brief description of why the permit, authorization, or approval is needed, application submittal date, and the date the permit, authorization, or approval was issued or is anticipated to be issued.

The Permittee shall demonstrate that it has obtained all necessary permits, authorizations, and approvals by filing an affidavit stating as such, prior to commencing project construction. The Permittee shall provide a copy of any such permits, authorizations, and approvals upon Commission request.

## **6 SPECIAL CONDITIONS**

Special conditions shall take precedence over other conditions of this permit should there be a conflict.

### **6.1 Independent Third-Party Monitor**

Prior to any construction, the Permittee shall propose a scope of work and identify one independent third party monitor on behalf of the Department of Commerce. The scope of work shall be developed in consultation with and approved by the Department of Commerce. This third-party monitor will report directly to and will be under the control of the Department of

## **DRAFT SITE PERMIT**

Dodge County Wind Project, PUC Docket No. IP-6981/WS-20-866

Commerce with costs borne by the Permittee. The Permittee shall file the scope of work, and the name, address, email, phone number, and emergency phone number of the third-party monitor with the Commission at least 14 days prior to the preconstruction meeting, and upon changes to the scope of work or third-party monitor contact information.

### **6.2 Wildlife-Friendly Erosion Control**

The Permittee shall use only “bio-netting” or “natural netting” types of erosion control materials and mulch products without synthetic (plastic) fiber additives.

### **6.3 Substation Lighting**

The Permittee shall use shielded and downward facing lighting and LED lighting that minimizes blue hue at the project substation. Downward facing lighting must be clearly visible on the plan and profile submitted for the project.

### **6.4 Dust Control**

The Permittee shall minimize and avoid, if possible, the use of chloride-based dust control chemicals (i.e. calcium chloride, magnesium chloride).

### **6.5 Snowmobile Trails**

The Permittee shall coordinate with local snowmobile groups regarding potential project related impacts to the snowmobile trails in Steele and Dodge counties. Coordination with local snowmobile groups shall include discussions of potential construction timing and activities that could impact the trail and potential trail rerouting needs.

## **7 SURVEYS AND REPORTING**

### **7.1 Biological and Natural Resource Inventories**

The Permittee, in consultation with the Commission and the DNR, shall design and conduct pre-construction desktop and field inventories of existing wildlife management areas, scientific and natural areas, recreation areas, native prairies and forests, wetlands, and any other biologically sensitive areas within the project site and assess the presence of state- or federally-listed or threatened species. The results of the inventories shall be filed with the Commission at least 30 days prior to the pre-construction meeting to confirm compliance of conditions in this permit. The Permittee shall file with the Commission, any biological surveys or studies conducted on this project, including those not required under this permit.

### **7.2 Shadow Flicker**

At least 14 days prior to the pre-construction meeting, the Permittee shall provide data on shadow flicker for each residence of non-participating landowners and participating landowners within and outside of the project boundary potentially subject to turbine shadow flicker exposure. Information shall include the results of modeling used, assumptions made, and the

## **DRAFT SITE PERMIT**

Dodge County Wind Project, PUC Docket No. IP-6981/WS-20-866

anticipated levels of exposure from turbine shadow flicker for each residence. The Permittee shall provide documentation on its efforts to avoid, minimize and mitigate shadow flicker exposure. The results of any modeling shall be filed with the Commission at least 14 days prior to the pre-construction meeting to confirm compliance with conditions of this permit.

### **7.3 Wake Loss Studies**

At least 14 days prior to the pre-construction meeting, the Permittee shall file with the Commission the pre-construction micro-siting analysis leading to the final tower locations and an estimate of total project wake losses. As part of the annual report on project energy production required under Section 10.8 of the permit the Permittee shall file with the Commission any operational wake loss studies conducted on this project during the calendar year preceding the report.

### **7.4 Noise Studies**

The Permittee shall file a proposed methodology for the conduct of a post-construction noise study at least 14 days prior to the pre-construction meeting. The Permittee shall develop the post-construction noise study methodology in consultation with the Department of Commerce. The study must incorporate the Department of Commerce Noise Study Protocol to determine the operating LWECs noise levels at different frequencies and at various distances from the turbines at various wind directions and speeds. The Permittee must conduct the post-construction noise study and file with the Commission the completed post-construction noise study within 18 months of commencing commercial operation.

### **7.5 Avian and Bat Protection**

#### **7.5.1 Operational Phase Fatality Monitoring**

The Permittee shall utilize a qualified third party to conduct a minimum of two full years of avian and bat fatality monitoring following the commencement of the operational phase of the project. Monitoring activities and results will be coordinated directly with MN DNR, USFWS, and the Commission. Detailed monitoring protocols, agency coordination, and any avoidance and minimization measures will be detailed in the project's ABPP.

#### **7.5.2 Avian and Bat Protection Plan**

The Permittee shall comply with the provisions of the August 2021 Avian and Bat Protection Plan (ABPP) submitted for this project as Appendix M the January 12, 2022, Site Permit Application, and all necessary revisions that occur during the permit issuance process will be incorporated into a Permit Version. The Permit Version of the ABPP will be filed with the Commission 14 days before the preconstruction meeting and shall include any updates associated with final construction plans.

## **DRAFT SITE PERMIT**

Dodge County Wind Project, PUC Docket No. IP-6981/WS-20-866

The ABPP must address steps to be taken to identify and mitigate impacts to avian and bat species during the construction phase and the operation phase of the project. The ABPP shall also include formal and incidental post-construction fatality monitoring, training, wildlife handling, documentation (*e.g.*, photographs), and reporting protocols for each phase of the project.

The Permittee shall, by the 15th of March following each complete or partial calendar year of operation, file with the Commission an annual report detailing findings of its annual audit of ABPP practices. The annual report shall include summarized and raw data of bird and bat fatalities and injuries and shall include bird and bat fatality estimates for the project using agreed upon estimators from the prior calendar year. The annual report shall also identify any deficiencies or recommended changes in the operation of the project or in the ABPP to reduce avian and bat fatalities and shall provide a schedule for implementing the corrective or modified actions. The Permittee shall provide a copy of the report to the Minnesota DNR, the Department of Commerce, and to the U.S. Fish and Wildlife Service (FWS) at the time of filing with the Commission.

### **7.5.3 Quarterly Incident Reports**

The Permittee shall submit quarterly avian and bat reports to the Commission. Quarterly reports are due by the 15th of January, April, July, and October commencing the day following commercial operation and terminating upon the expiration of this permit. Each report shall identify any dead or injured avian and bat species, location of find by turbine number, and date of find for the reporting period in accordance with the reporting protocols. If a dead or injured avian or bat species is found, the report shall describe the potential cause of the occurrence (if known) and the steps taken to address future occurrences. The Permittee shall provide a copy of the report to the DNR, the Department of Commerce, and to the FWS at the time of filing with the Commission.

### **7.5.4 Immediate Incident Reports**

The Permittee shall notify the Commission, the Department of Commerce, the FWS, and the DNR within 24 hours of the discovery of any of the following:

- (a) five or more dead or injured birds or bats at an individual turbine location within a five day reporting period;
- (b) twenty or more dead or injured birds or bats across the entire facility, within a five day reporting period;
- (c) one or more dead or injured state threatened, endangered, or species of special concern;

## **DRAFT SITE PERMIT**

Dodge County Wind Project, PUC Docket No. IP-6981/WS-20-866

- (d) one or more dead or injured federally listed species, including species proposed for listing; or
- (e) one or more dead or injured bald or golden eagle(s).

In the event that one of the four discoveries listed above should be made, the Permittee must file with the Commission within seven days, a compliance report identifying the details of what was discovered, the turbine where the discovery was made, a detailed log of agencies and individuals contacted, and current plans being undertaken to address the issue.

### **7.5.5 Turbine Operational Curtailment**

The Permittee shall operate all facility turbines so that all turbines are locked or feathered up to the manufacturer's standard cut-in speed from one-half hour before sunset to one-half hour after sunrise of the following day from April 1 to October 31 of each year of operation. All operating turbines at the facility must be equipped with operational software that is capable of allowing for adjustment of turbine cut-in speeds.

## **8 AUTHORITY TO CONSTRUCT LWECs**

### **8.1 Wind Rights**

At least 14 days prior to the pre-construction meeting, the Permittee shall demonstrate that it has obtained the wind rights and any other rights necessary to construct and operate the project within the boundaries authorized by this permit. Nothing in this permit shall be construed to preclude any other person from seeking a permit to construct a wind energy conversion system in any area within the boundaries of the project covered by this permit if the Permittee does not hold exclusive wind rights for such areas.

### **8.2 Power Purchase Agreement**

In the event the Permittee does not have a power purchase agreement or some other enforceable mechanism for sale of the electricity to be generated by the project at the time this permit is issued, the Permittee shall provide notice to the Commission when it obtains a commitment for purchase of the power. This permit does not authorize construction of the project until the Permittee has obtained a power purchase agreement or some other enforceable mechanism for sale of the electricity to be generated by the project. In the event the Permittee does not obtain a power purchase agreement or some other enforceable mechanism for sale of the electricity to be generated by the project within two years of the issuance of this permit, the Permittee must advise the Commission of the reason for not having such commitment. In such event, the Commission may determine whether this permit should

## **DRAFT SITE PERMIT**

Dodge County Wind Project, PUC Docket No. IP-6981/WS-20-866

be amended or revoked. No amendment or revocation of this permit may be undertaken except in accordance with Minn. R. 7854.1300.

### **8.3 Failure to Commence Construction**

If the Permittee has not completed the pre-construction surveys required under this permit and commenced construction of the project within two years of the issuance of this permit, the Permittee must advise the Commission of the reason construction has not commenced. In such event, the Commission shall make a determination as to whether this permit should be amended or revoked. No revocation of this permit may be undertaken except in accordance with applicable statutes and rules, including Minn. R. 7854.1300.

## **9 COMPLAINT PROCEDURES**

Fourteen (14) days prior to pre-construction meeting, the Permittee shall submit to the Commission the procedures that will be used to receive and respond to complaints. The procedures shall be in accordance with the requirements of Minn. R. 7829.1500 or Minn. R. 7829.1700, and as set forth in the complaint procedures attached to this permit.

Upon request, the Permittee shall assist the Commission with the disposition of unresolved or longstanding complaints. This assistance shall include, but is not limited to, the submittal of complaint correspondence and complaint resolution efforts.

## **10 COMPLIANCE REQUIREMENTS**

Failure to timely and properly make compliance filings required by this permit is a failure to comply with the conditions of this permit. Compliance filings must be electronically filed with the Commission.

### **10.1 Pre-Construction Meeting**

Prior to the start of any construction, the Permittee shall participate in a pre-construction meeting with the Department of Commerce and Commission staff to review pre-construction filing requirements, scheduling, and to coordinate monitoring of construction and site restoration activities. Within 14 days following the pre-construction meeting, the Permittee shall file with the Commission, a summary of the topics reviewed and discussed and a list of attendees. The Permittee shall indicate in the filing the construction start date.

### **10.2 Pre-Operation Meeting**

At least 14 days prior to commercial operation of the facility, the Permittee shall participate in a pre-operation meeting with the Department of Commerce and Commission staff to coordinate field monitoring of operation activities for the project. Within 14 days following the pre-



## **DRAFT SITE PERMIT**

Dodge County Wind Project, PUC Docket No. IP-6981/WS-20-866

operation meeting, the Permittee shall file with the Commission, a summary of the topics reviewed and discussed and a list of attendees.

### **10.3 Site Plan**

At least 30 days prior to the pre-construction meeting, the Permittee shall provide the Commission, the Department, and Dodge County Environmental Services and Steele County Planning and Zoning with a site plan that includes specifications and drawings for site preparation and grading; specifications and locations of all turbines and other structures to be constructed including all electrical equipment, collector and feeder lines, pollution control equipment, fencing, roads, and other associated facilities; and procedures for cleanup and restoration. The documentation shall include maps depicting the site boundary and layout in relation to that approved by this permit. The Permittee shall document, through GIS mapping, compliance with the setbacks and site layout restrictions required by this permit, including compliance with the noise standards pursuant to Minnesota Rules Chapter 7030. At the same time, the Permittee shall notify affected landowners and city and town clerks that the site plan is on file with the Commission, Dodge County Environmental Services, and the Steele County Planning and Zoning. The Permittee may submit a site plan and engineering drawings for only a portion of the project if the Permittee intends to commence construction on certain parts of the project before completing the site plan and engineering drawings for other parts of the project.

The Permittee may not commence construction until the 30 days has expired or until the Commission has advised the Permittee in writing that it has completed its review of the documents and determined that the planned construction is consistent with this permit. If the Permittee intends to make any significant changes to its site plan or the specifications and drawings after submission to the Commission, the Permittee shall notify the Commission, the Department, Dodge County Environmental Services, Steele County Planning and Zoning, city and town clerks, and the affected landowners at least five days before implementing the changes. No changes shall be made that would be in violation of any of the terms of this permit.

In the event that previously unidentified human and environmental conditions are discovered during construction that by law or pursuant to conditions outlined in this permit would preclude the use of that site as a turbine site, the Permittee shall have the right to move or relocate turbine site. Under these circumstances, the Permittee shall notify the Commission, the Department, the MPCA, the DNR, Dodge County Environmental Services, Steele County Planning and Zoning, city and town clerks, and the affected landowners of any turbines that are to be relocated, and provide the previously unidentified environmental conditions and how the movement of the turbine mitigates the human and environmental impact at least five days before implementing the changes. No changes shall be made that would be in violation of any terms of this permit.

### **10.4 Status Reports**

## **DRAFT SITE PERMIT**

Dodge County Wind Project, PUC Docket No. IP-6981/WS-20-866

The Permittee shall file status reports with the Commission on progress regarding site construction. The Permittee need not report more frequently than monthly. Reports shall begin with the commencement of site construction and continue until completion of restoration. Reports shall describe construction activities and progress and activities undertaken in compliance with this permit. Reports shall include text and photographs.

### **10.5 Labor Statistic Reporting**

The Permittee shall file quarterly reports with the Commission within 45 days of the end of the quarter regarding construction workers that participated in the construction of the project. The reports shall (a) detail the Permittee's efforts and the site contractor's efforts to hire Minnesota workers, and (b) provide an account of: (i) the gross number of hours worked by or full-time equivalent workers who are Minnesota residents, as defined in Minn. Stat. § 290.01, subd. 7; (ii) the gross number of hours worked by or full-time equivalent workers who are residents of other states, but maintain a permanent residence within 150 miles of the project; and (iii) the total gross hours worked or total full-time equivalent workers. Permittee shall work with its contractor to determine the suitable reporting metric. The report may not include personally identifiable data.

### **10.6 In-Service Date**

At least three days before the facility is to be placed into service, the Permittee shall notify the Commission of the date on which the facility will be placed into service and the date on which construction was completed.

### **10.7 As-Builts**

Within 90 days after completion of construction, the Permittee shall submit copies of all final as-built plans and specifications developed during the project.

### **10.8 GPS Data**

Within 90 days after completion of construction, the Permittee shall submit to the Commission, in the format requested by the Commission, geo-spatial information (*e.g.*, ArcGIS compatible map files, GPS coordinates, associated database of characteristics) for all structures associated with the LWECS.

### **10.9 Project Energy Production**

The Permittee shall, by February 1st following each complete or partial year of project operation, file a report with the Commission on the monthly energy production of the project including:

## **DRAFT SITE PERMIT**

Dodge County Wind Project, PUC Docket No. IP-6981/WS-20-866

- (a) the installed nameplate capacity of the permitted project;
- (b) the total monthly energy generated by the project in MW hours;
- (c) the monthly capacity factor of the project;
- (d) yearly energy production and capacity factor for the project;
- (e) the operational status of the project and any major outages, major repairs, or turbine performance improvements occurring in the previous year; and
- (f) any other information reasonably requested by the Commission.

This information shall be considered public and must be filed electronically.

### **10.10 Wind Resource Use**

The Permittee shall, by February 1st following each complete or partial calendar year of operation, file with the Commission the average monthly and average annual wind speed collected at one permanent meteorological tower during the preceding year or partial year of operation. This information shall be considered public and must be filed electronically.

### **10.11 Emergency Response**

The Permittee shall prepare an Emergency Response Plan in consultation with the emergency responders having jurisdiction over the facility prior to project construction. The Permittee shall submit a copy of the plan, along with any comments from emergency responders, to the Commission at least 14 days prior to the pre-construction meeting and a revised plan, if any, at least 14 days prior to the pre-operation meeting. The Permittee shall provide as a compliance filing confirmation that the Emergency Response Plan was provided to the emergency responders and Public Safety Answering Points (PSAP) with jurisdiction over the facility prior to commencement of construction. The Permittee shall obtain and register the facility address or other location indicators acceptable to the emergency responders and PSAP having jurisdiction over the facility.

### **10.12 Extraordinary Events**

Within 24 hours of discovery of an occurrence, the Permittee shall notify the Commission of any extraordinary event. Extraordinary events include but shall not be limited to: fires, tower collapse, thrown blade, acts of sabotage, collector or feeder line failure, and injured worker or private person. The Permittee shall, within 30 days of the occurrence, file a report with the

## **DRAFT SITE PERMIT**

Dodge County Wind Project, PUC Docket No. IP-6981/WS-20-866

Commission describing the cause of the occurrence and the steps taken to avoid future occurrences.

## **11 DECOMMISSIONING, RESTORATION, AND ABANDONMENT**

### **11.1 Decommissioning Plan**

The Permittee shall comply with the provisions of the most recently filed and accepted decommissioning plan. The initial version of the decommissioning plan was submitted for this project as Appendix K of the January 12, 2022, site permit application. The Permittee shall file an updated decommissioning plan incorporating comments and information from the permit issuance process and any updates associated with the final construction plans, with ~~to~~ the Commission at least fourteen 14 days prior to the pre-construction meeting. The decommissioning plan shall be updated every five years ~~thereafter~~ following the commercial operation date.

The decommissioning plan shall provide information identifying all surety and financial securities established for decommissioning and site restoration of the project in accordance with the requirements of Minn. R. 7854.0500, subp. 13. The decommissioning plan shall provide an itemized breakdown of costs of decommissioning all project components, which shall include labor and equipment. The plan shall identify cost estimates for the removal of turbines, turbine foundations, underground collection cables, access roads, crane pads, substations, and other project components. The plan may also include anticipated costs for the replacement of turbines or repowering the project by upgrading equipment.

The Permittee shall also submit the decommissioning plan to the local unit of government having direct zoning authority over the area in which the project is located. The Permittee shall ensure that it carries out its obligations to provide for the resources necessary to fulfill its requirements to properly decommission the project at the appropriate time. The Commission may at any time request the Permittee to file a report with the Commission describing how the Permittee is fulfilling this obligation.

### **11.2 Site Restoration**

Upon expiration of this permit, or upon earlier termination of operation of the project, or any turbine within the project, the Permittee shall have the obligation to dismantle and remove from the site all towers, turbine generators, transformers, overhead and underground cables and lines, foundations, buildings, and ancillary equipment to a depth of four feet. Any agreement for removal to a lesser depth or no removal shall be recorded with the county and shall show the locations of all such foundations. To the extent feasible, the Permittee shall

## **DRAFT SITE PERMIT**

Dodge County Wind Project, PUC Docket No. IP-6981/WS-20-866

restore and reclaim the site to pre-project conditions, including topography and topsoil conditions. All access roads shall be removed unless written approval is given by the affected landowner requesting that one or more roads, or portions thereof, be retained. All such agreements between the Permittee and the affected landowner shall be submitted to the Commission prior to completion of restoration activities. The site shall be restored in accordance with the requirements of this condition within 18 months of termination.

### **11.3 Abandoned Turbines**

The Permittee shall advise the Commission of any turbines that are abandoned prior to termination of operation of the project. The project, or any turbine within the project, shall be considered abandoned after one year without energy production and the land restored pursuant to Section 11.2 unless a plan is submitted to and approved by the Commission outlining the steps and schedule for returning the project, or any turbine within the project, to service.

## **12 COMMISSION AUTHORITY AFTER PERMIT ISSUANCE**

### **12.1 Final Boundaries**

After completion of construction, the Commission shall determine the need to adjust the final boundaries of the site required for this project in accordance with Minn. R. 7854.1300, subp. 1.

### **12.2 Expansion of Site Boundaries**

No expansion of the site boundaries described in this permit shall be authorized without the approval of the Commission. The Permittee may submit to the Commission a request for a change in the boundaries of the site for the project. The Commission will respond to the requested change in accordance with applicable statutes and rules.

### **12.3 Periodic Review**

The Commission shall initiate a review of this permit and the applicable conditions at least once every five years. The purpose of the periodic review is to allow the Commission, the Permittee, and other interested persons an opportunity to consider modifications in the conditions of this permit. No modification may be made except in accordance with applicable statutes and rules.

### **12.4 Modification of Conditions**

After notice and opportunity for hearing, this permit may be modified or amended for cause, including but not limited to the following:

- (a) violation of any condition in this permit;

## **DRAFT SITE PERMIT**

Dodge County Wind Project, PUC Docket No. IP-6981/WS-20-866

- (b) endangerment of human health or the environment by operation of the project; or
- (c) existence of other grounds established by rule.

### **12.5 More Stringent Rules**

The issuance of this permit does not prevent the future adoption by the Commission of rules or orders more stringent than those now in existence and does not prevent the enforcement of these more stringent rules and orders against the Permittee.

### **12.6 Right of Entry**

The Permittee shall allow Commission designated representatives to perform the following, upon reasonable notice, upon presentation of credentials and at all times in compliance with the Permittee's site safety standards:

- (a) To enter upon the facilities easement of the property for the purpose of obtaining information, examining records, and conducting surveys or investigations.
- (b) To bring such equipment upon the facilities easement of the property as is necessary to conduct such surveys and investigations.
- (c) To sample and monitor upon the facilities easement of the property.
- (d) To examine and copy any documents pertaining to compliance with the conditions of this permit.

### **12.7 Proprietary Information**

Certain information required to be filed with the Commission under this permit may constitute trade secret information or other type of proprietary information under the Data Practices Act or other law. The Permittee must satisfy requirements of applicable law to obtain the protection afforded by the law.

## **13 PERMIT AMENDMENT**

This permit may be amended at any time by the Commission in accordance with Minn. R. 7854.1300, subp. 2. Any person may request an amendment of the conditions of this permit by submitting a request to the Commission in writing describing the amendment sought and the reasons for the amendment. The Commission will mail notice of receipt of the request to the Permittee. The Commission may amend the conditions after affording the Permittee and interested persons such process as is required.

## **DRAFT SITE PERMIT**

Dodge County Wind Project, PUC Docket No. IP-6981/WS-20-866

### **14 TRANSFER OF PERMIT**

The Permittee may request at any time that the Commission transfer this permit to another person or entity. The Permittee shall provide the name and description of the person or entity to whom the permit is requested to be transferred, the reasons for the transfer, a description of the facilities affected, and the proposed effective date of the transfer. The person to whom the permit is to be transferred shall provide the Commission with such information as the Commission shall require to determine whether the new permittee can comply with the conditions of the permit. The Commission may authorize transfer of the permit after affording the Permittee, the new permittee, and interested persons such process as is required. The Commission may impose additional conditions on any new permittee as part of the approval of the transfer.

Within 14 days of the commercial operation date, the Permittee shall file a notice describing its ownership structure, identifying, as applicable:

- (a) the owner(s) of the financial and governance interests of the Permittee;
- (b) the owner(s) of the majority financial and governance interests of the Permittee's owners; and
- (c) the Permittee's ultimate parent entity (meaning the entity which is not controlled by any other entity).

The Permittee shall immediately notify the Commission of:

- (a) a change in owner(s) of the majority\* financial or governance interests in the Permittee;
- (b) a change in owner(s) of the majority\* financial or governance interests of the Permittee's owners; or
- (c) a sale which changes the parent entity of the Permittee.

\*When there are only co-equal 50/50 percent interests, any change shall be considered a change in majority interest.

The Permittee shall notify the Commission of:

- (a) the sale of a parent entity or a majority interest in the Permittee;
- (b) the sale of a majority interest of the Permittee's owners or majority interest of the owners; or

## **DRAFT SITE PERMIT**

Dodge County Wind Project, PUC Docket No. IP-6981/WS-20-866

- (c) a sale which changes the entity with ultimate control over the Permittee.

### **15 REVOCATION OR SUSPENSION OF PERMIT**

The Commission may take action to suspend or revoke this permit upon the grounds that:

- (a) a false statement was knowingly made in the application or in accompanying statements or studies required of the Permittee, and a true statement would have warranted a change in the Commission's findings;
- (b) there has been a failure to comply with material conditions of this permit, or there has been a failure to maintain health and safety standards;
- (c) there has been a material violation of a provision of an applicable statute, rule, or an order of the Commission; or
- (d) the Permittee has filed a petition with the Commission requesting that the permit be revoked or terminated.

In the event the Commission determines that it is appropriate to consider revocation or suspension of this permit, the Commission shall proceed in accordance with the requirements of Minn. R. 7854.1300 to determine the appropriate action. Upon a finding of any of the above, the Commission may require the Permittee to undertake corrective measures in lieu of having this permit suspended or revoked.

### **16 EXPIRATION DATE**

This permit shall expire 30 years after the date this permit was approved and adopted.



DRAFT SITE PERMIT

**ATTACHMENT 1**

Complaint Handling Procedures for Permitted Energy Facilities

**MINNESOTA PUBLIC UTILITIES COMMISSION  
COMPLAINT HANDLING PROCEDURES FOR  
PERMITTED ENERGY FACILITIES**

**A. Purpose**

To establish a uniform and timely method of reporting and resolving complaints received by the permittee concerning permit conditions for site or route preparation, construction, cleanup, restoration, operation, and maintenance.

**B. Scope**

This document describes complaint reporting procedures and frequency.

**C. Applicability**

The procedures shall be used for all complaints received by the permittee and all complaints received by the Minnesota Public Utilities Commission (Commission) under Minn. R. 7829.1500 or Minn. R. 7829.1700 relevant to this permit.

**D. Definitions**

**Complaint:** A verbal or written statement presented to the permittee by a person expressing dissatisfaction or concern regarding site or route preparation, cleanup or restoration, or other permit conditions. Complaints do not include requests, inquiries, questions or general comments.

**Substantial Complaint:** A written complaint alleging a violation of a specific permit condition that, if substantiated, could result in permit modification or suspension pursuant to the applicable regulations.

**Unresolved Complaint:** A complaint which, despite the good faith efforts of the permittee and a person, remains unresolved or unsatisfactorily resolved to one or both of the parties.

**Person:** An individual, partnership, joint venture, private or public corporation, association, firm, public service company, cooperative, political subdivision, municipal corporation, government agency, public utility district, or any other entity, public or private; however organized.

## **E. Complaint Documentation and Processing**

1. The permittee shall designate a representative responsible for filing complaints to the Commission's eDocket system. This person's name, phone number and email address shall accompany all complaint submittals. The name and contact information for the representative shall be kept current in eDockets.
2. A person presenting the complaint should, to the extent possible, include the following information in their communications:
  - a. name, address, phone number, and email address;
  - b. initial date of the complaint;
  - c. tract, parcel number, or address of the complaint;
  - d. a summary of the complaint; and
  - e. whether the complaint relates to a permit violation, a construction practice issue, or other type of complaint.
3. The permittee shall document all complaints by maintaining a record of all applicable information concerning the complaint, including the following:
  - a. docket number and project name;
  - b. name of complainant, address, phone number and email address;
  - c. precise description of property or parcel number;
  - d. name of permittee representative receiving complaint and date of receipt;
  - e. nature of complaint and the applicable permit condition(s);
  - f. summary of activities undertaken to resolve the complaint; and
  - g. a statement on the final disposition of the complaint.

## **F. Reporting Requirements**

The permittee shall commence complaint reporting at the beginning of project construction and continue through the term of the permit, unless otherwise required below. The permittee shall report all complaints to the Commission according to the following schedule:

**Immediate Reports:** All substantial complaints shall be reported to the Commission the same day received, or on the following working day for complaints received after working hours. Such reports are to be directed to the Commission's Public Advisor at 1-800-657-3782 (voice messages are acceptable) or [publicadvisor.puc@state.mn.us](mailto:publicadvisor.puc@state.mn.us). For e-mail reporting, the email

subject line should read “PUC EFP Complaint” and include the appropriate project docket number.

**Monthly Reports:** During project construction, restoration, and operation, a summary of all complaints, including substantial complaints received or resolved during the preceding month, shall be filed by the 15th of each month to Will Seuffert, Executive Secretary, Public Utilities Commission, using the eDockets system. The eDockets system is located at: <https://www.edockets.state.mn.us/EFiling/home.jsp>. If no complaints were received during the preceding month, the permittee shall file a summary indicating that no complaints were received.

If a project has submitted twelve consecutive months of complaint reports with no complaints, monthly reports can terminate by a letter to eDockets notifying the Commission of such action. If a substantial complaint is received (by the company or the Commission) following termination of the monthly complaint report, as noted above, the monthly reporting should commence for a period of one year following the most recent complaint or upon resolution of all pending complaints.

If a permittee is found to be in violation of this section, the Commission may reinstate monthly complaint reporting for the remaining permit term or enact some other commensurate requirement via notification by the Executive Secretary or some other action as decided by the Commission.

#### **G. Complaints Received by the Commission**

Complaints received directly by the Commission from aggrieved persons regarding the permit or issues related to site or route preparation, construction, cleanup, restoration, or operation and maintenance will be promptly sent to the permittee.

The permittee shall notify the Commission when the issue has been resolved. The permittee will add the complaint to the monthly reports of all complaints. If the permittee is unable to find resolution, the Commission will use the process outlined in the Unresolved Complaints Section to process the issue.

#### **H. Commission Process for Unresolved Complaints**

Complaints raising substantial and unresolved permit issues will be investigated by the Commission. Staff will notify the permittee and appropriate persons if it determines that the

complaint is a substantial complaint. With respect to such complaints, the permittee and complainant shall be required to submit a written summary of the complaint and its current position on the issues to the Commission. Staff will set a deadline for comments. As necessary, the complaint will be presented to the Commission for consideration.

**I. Permittee Contacts for Complaints and Complaint Reporting**

Complaints may be filed by mail or email to the permittee's designated complaint representative, or to the Commission's Public Advisor at 1-800-657-3782 or [publicadvisor.puc@state.mn.us](mailto:publicadvisor.puc@state.mn.us). The name and contact information for the permittee's designated complaint representative shall be kept current in the Commission's eDocket system.

DRAFT SITE PERMIT

DRAFT SITE PERMIT

**ATTACHMENT 2**

Compliance Filing Procedures for Permitted Energy Facilities

**MINNESOTA PUBLIC UTILITIES COMMISSION  
COMPLIANCE FILING PROCEDURE FOR  
PERMITTED ENERGY FACILITIES**

**A. Purpose**

To establish a uniform and timely method of submitting information required by Commission energy facility permits.

**B. Scope and Applicability**

This procedure encompasses all known compliance filings required by permit.

**C. Definitions**

**Compliance Filing:** A filing of information to the Commission, where the information is required by a Commission site or route permit.

**D. Responsibilities**

1. The permittee shall file all compliance filings with Will Seuffert, Executive Secretary, Public Utilities Commission, through the eDockets system. The eDockets system is located at:  
<https://www.edockets.state.mn.us/EFiling/home.jsp>

General instructions are provided on the eDockets website. Permittees must register on the website to file documents.

2. All filings must have a cover sheet that includes:
  - a. Date
  - b. Name of submitter/permittee
  - c. Type of permit (site or route)
  - d. Project location
  - e. Project docket number
  - f. Permit section under which the filing is made
  - g. Short description of the filing

3. Filings that are graphic intensive (e.g., maps, engineered drawings) must, in addition to being electronically filed, be submitted as paper copies and on CD. Paper copies and CDs should be sent to: 1) Will Seuffert, Executive Secretary, Minnesota Public Utilities Commission, 121 7th Place East, Suite 350, St. Paul, MN 55101-2147, and 2) Department of Commerce, Energy Environmental Review and Analysis, 85 7th Place East, Suite 500, St. Paul, MN 55101-2198.

The Commission may request a paper copy of any electronically filed document.

DRAFT SITE PERMIT



## PERMIT COMPLIANCE FILINGS<sup>1</sup>

PERMITTEE:

PERMIT TYPE:

PROJECT LOCATION:

PUC DOCKET NUMBER:

Filing Number	Permit Section	Description of Compliance Filing	Due Date

---

<sup>1</sup> This compilation of permit compliance filings is provided for the convenience of the permittee and the Commission. It is not a substitute for the permit; the language of the permit controls.

**DRAFT SITE PERMIT**

Dodge County Wind Project, PUC Docket No. IP-6981/WS-20-866

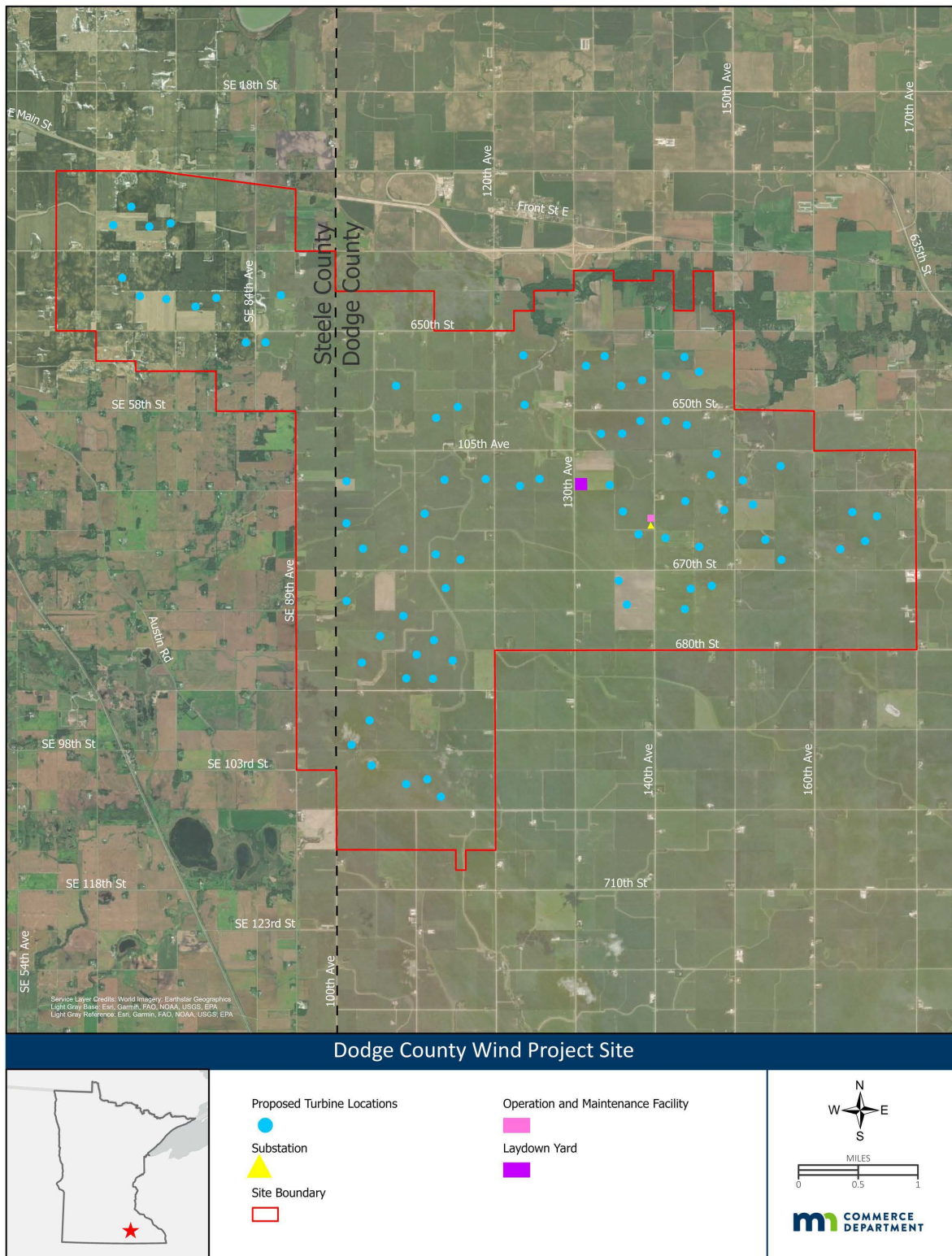
DRAFT SITE PERMIT

Attachment 3  
Site Maps

## DRAFT SITE PERMIT

Dodge County Wind Project, PUC Docket No. IP-6981/WS-20-866

### *Dodge County Wind Project - Map - Preliminary*



## **CERTIFICATE OF SERVICE**

I, Robin Benson, hereby certify that I have this day, served a true and correct copy of the following document to all persons at the addresses indicated below or on the attached list by electronic filing, electronic mail, courier, interoffice mail or by depositing the same enveloped with postage paid in the United States mail at St. Paul, Minnesota.

**Minnesota Public Utilities Commission**

**ORDER ISSUING PRELIMINARY DRAFT SITE PERMIT, AUTHORIZING  
ADVISORY TASK FORCE, AND VARYING RULE**

Docket Numbers: **IP-6981/CN-20-865, IP-6981/WS-20-866 and IP-6981/TL-20-867**

Dated this **24th** day of **February, 2023**

/s/ Robin Benson

First Name	Last Name	Email	Company Name	Address	Delivery Method	View Trade Secret	Service List Name
Generic Notice	Commerce Attorneys	commerce.attorneys@ag.state.mn.us	Office of the Attorney General-DOC	445 Minnesota Street Suite 1400  St. Paul, MN 55101	Electronic Service	Yes	OFF_SL_20-865_Official CC Service List
Kate	Fairman	kate.frantz@state.mn.us	Department of Natural Resources	Box 32 500 Lafayette Rd St. Paul, MN 551554032	Electronic Service	No	OFF_SL_20-865_Official CC Service List
Annie	Felix Gerth	annie.felix-gerth@state.mn.us		Board of Water & Soil Resources 520 Lafayette Rd Saint Paul, MN 55155	Electronic Service	No	OFF_SL_20-865_Official CC Service List
Sharon	Ferguson	sharon.ferguson@state.mn.us	Department of Commerce	85 7th Place E Ste 280  Saint Paul, MN 551012198	Electronic Service	No	OFF_SL_20-865_Official CC Service List
Lucas	Franco	lfranco@liunagroc.com	LIUNA	81 Little Canada Rd E  Little Canada, MN 55117	Electronic Service	No	OFF_SL_20-865_Official CC Service List
Kari	Howe	kari.howe@state.mn.us	DEED	332 Minnesota St, #E200 1ST National Bank Bldg St. Paul, MN 55101	Electronic Service	No	OFF_SL_20-865_Official CC Service List
Ray	Kirsch	Raymond.Kirsch@state.mn.us	Department of Commerce	85 7th Place E Ste 500  St. Paul, MN 55101	Electronic Service	No	OFF_SL_20-865_Official CC Service List
Stacy	Kotch Egstad	Stacy.Kotch@state.mn.us	MINNESOTA DEPARTMENT OF TRANSPORTATION	395 John Ireland Blvd.  St. Paul, MN 55155	Electronic Service	No	OFF_SL_20-865_Official CC Service List
Karen	Kromar	karen.kromar@state.mn.us	MN Pollution Control Agency	520 Lafayette Rd  Saint Paul, MN 55155	Electronic Service	No	OFF_SL_20-865_Official CC Service List
Mark	Lennox	Mark.Lennox@nee.com	Dodge County Wind, LLC	700 Universe Blvd  Juno Beach, FL 33408	Electronic Service	No	OFF_SL_20-865_Official CC Service List

First Name	Last Name	Email	Company Name	Address	Delivery Method	View Trade Secret	Service List Name
Peder	Mewis	pmewis@cleangridalliance.org	Clean Grid Alliance	570 Asbury St.  St. Paul, MN 55104	Electronic Service	No	OFF_SL_20-865_Official CC Service List
Judge Kimberly	Middendorf	kimberly.middendorf@state.mn.us	Office of Administrative Hearings	PO Box 64620  Saint Paul, MN 55164-0620	Electronic Service	Yes	OFF_SL_20-865_Official CC Service List
Brian J	Murphy	brian.j.murphy@nexteraenergy.com	Nextera Energy Resources, LLC	700 Universe Blvd LAW-JB Juno Beach, FL 33408	Electronic Service	No	OFF_SL_20-865_Official CC Service List
Kevin	Pranis	kpranis@liunagro.com	Laborers' District Council of MN and ND	81 E Little Canada Road  St. Paul, Minnesota 55117	Electronic Service	No	OFF_SL_20-865_Official CC Service List
Generic Notice	Residential Utilities Division	residential.utilities@ag.state.mn.us	Office of the Attorney General-RUD	1400 BRM Tower 445 Minnesota St St. Paul, MN 551012131	Electronic Service	Yes	OFF_SL_20-865_Official CC Service List
Stephan	Roos	stephan.roos@state.mn.us	MN Department of Agriculture	625 Robert St N  Saint Paul, MN 55155-2538	Electronic Service	No	OFF_SL_20-865_Official CC Service List
Will	Seuffert	Will.Seuffert@state.mn.us	Public Utilities Commission	121 7th PI E Ste 350  Saint Paul, MN 55101	Electronic Service	Yes	OFF_SL_20-865_Official CC Service List
Janet	Shaddix Elling	jshaddix@janetshaddix.com	Shaddix And Associates	7400 Lyndale Ave S Ste 190  Richfield, MN 55423	Electronic Service	Yes	OFF_SL_20-865_Official CC Service List
Cynthia	Warzecha	cynthia.warzecha@state.mn.us	Minnesota Department of Natural Resources	500 Lafayette Road Box 25 St. Paul, Minnesota 55155-4040	Electronic Service	No	OFF_SL_20-865_Official CC Service List

First Name	Last Name	Email	Company Name	Address	Delivery Method	View Trade Secret	Service List Name
Generic Notice	Commerce Attorneys	commerce.attorneys@ag.state.mn.us	Office of the Attorney General-DOC	445 Minnesota Street Suite 1400  St. Paul, MN 55101	Electronic Service	Yes	OFF_SL_20-866_Official CC Service List
Adam	Duininck	aduininck@ncsrcc.org	North Central States Regional Council of Carpenters	700 Olive Street  St. Paul, MN 55130	Electronic Service	No	OFF_SL_20-866_Official CC Service List
Kate	Fairman	kate.frantz@state.mn.us	Department of Natural Resources	Box 32 500 Lafayette Rd St. Paul, MN 551554032	Electronic Service	No	OFF_SL_20-866_Official CC Service List
Annie	Felix Gerth	annie.felix-gerth@state.mn.us		Board of Water & Soil Resources 520 Lafayette Rd Saint Paul, MN 55155	Electronic Service	No	OFF_SL_20-866_Official CC Service List
Sharon	Ferguson	sharon.ferguson@state.mn.us	Department of Commerce	85 7th Place E Ste 280  Saint Paul, MN 551012198	Electronic Service	No	OFF_SL_20-866_Official CC Service List
Lucas	Franco	lfranco@liunagroc.com	LIUNA	81 Little Canada Rd E  Little Canada, MN 55117	Electronic Service	No	OFF_SL_20-866_Official CC Service List
Kari	Howe	kari.howe@state.mn.us	DEED	332 Minnesota St, #E200 1ST National Bank Bldg St. Paul, MN 55101	Electronic Service	No	OFF_SL_20-866_Official CC Service List
Ray	Kirsch	Raymond.Kirsch@state.mn.us	Department of Commerce	85 7th Place E Ste 500  St. Paul, MN 55101	Electronic Service	No	OFF_SL_20-866_Official CC Service List
Stacy	Kotch Egstad	Stacy.Kotch@state.mn.us	MINNESOTA DEPARTMENT OF TRANSPORTATION	395 John Ireland Blvd.  St. Paul, MN 55155	Electronic Service	No	OFF_SL_20-866_Official CC Service List
Karen	Kromar	karen.kromar@state.mn.us	MN Pollution Control Agency	520 Lafayette Rd  Saint Paul, MN 55155	Electronic Service	No	OFF_SL_20-866_Official CC Service List

First Name	Last Name	Email	Company Name	Address	Delivery Method	View Trade Secret	Service List Name
Mark	Lennox	Mark.Lennox@nee.com	Dodge County Wind, LLC	700 Universe Blvd Juno Beach, FL 33408	Electronic Service	No	OFF_SL_20-866_Official CC Service List
Judge Kimberly	Middendorf	kimberly.middendorf@state.mn.us	Office of Administrative Hearings	PO Box 64620 Saint Paul, MN 55164-0620	Electronic Service	Yes	OFF_SL_20-866_Official CC Service List
Brian J	Murphy	brian.j.murphy@nexteraenergy.com	Nextera Energy Resources, LLC	700 Universe Blvd LAW-JB Juno Beach, FL 33408	Electronic Service	No	OFF_SL_20-866_Official CC Service List
Kevin	Pranis	kpranis@liunagroc.com	Laborers' District Council of MN and ND	81 E Little Canada Road St. Paul, Minnesota 55117	Electronic Service	No	OFF_SL_20-866_Official CC Service List
Generic Notice	Residential Utilities Division	residential.utilities@ag.state.mn.us	Office of the Attorney General-RUD	1400 BRM Tower 445 Minnesota St St. Paul, MN 551012131	Electronic Service	Yes	OFF_SL_20-866_Official CC Service List
Stephan	Roos	stephan.roos@state.mn.us	MN Department of Agriculture	625 Robert St N Saint Paul, MN 55155-2538	Electronic Service	No	OFF_SL_20-866_Official CC Service List
Nathaniel	Runke	nrunke@local49.org		611 28th St. NW Rochester, MN 55901	Electronic Service	No	OFF_SL_20-866_Official CC Service List
Will	Seuffert	Will.Seuffert@state.mn.us	Public Utilities Commission	121 7th PI E Ste 350 Saint Paul, MN 55101	Electronic Service	Yes	OFF_SL_20-866_Official CC Service List
Janet	Shaddix Elling	jshaddix@janetshaddix.com	Shaddix And Associates	7400 Lyndale Ave S Ste 190 Richfield, MN 55423	Electronic Service	Yes	OFF_SL_20-866_Official CC Service List
Cynthia	Warzecha	cynthia.warzecha@state.mn.us	Minnesota Department of Natural Resources	500 Lafayette Road Box 25 St. Paul, Minnesota 55155-4040	Electronic Service	No	OFF_SL_20-866_Official CC Service List



[illegible]

First Name	Last Name	Email	Company Name	Address	Delivery Method	View Trade Secret	Service List Name
Generic Notice	Residential Utilities Division	residential.utilities@ag.state.mn.us	Office of the Attorney General-RUD	1400 BRM Tower 445 Minnesota St St. Paul, MN 551012131	Electronic Service	Yes	OFF_SL_20-867_Official CC Service List
Nathaniel	Runke	nrunke@local49.org		611 28th St. NW  Rochester, MN 55901	Electronic Service	No	OFF_SL_20-867_Official CC Service List
Zachary	Ruzycki	zruzycki@greenergy.com	Great River Energy	12300 Elm Creek Boulevard  Maple Grove, Minnesota 55369	Electronic Service	No	OFF_SL_20-867_Official CC Service List
Will	Seuffert	Will.Seuffert@state.mn.us	Public Utilities Commission	121 7th PI E Ste 350  Saint Paul, MN 55101	Electronic Service	Yes	OFF_SL_20-867_Official CC Service List
Janet	Shaddix Elling	jshaddix@janetshaddix.com	Shaddix And Associates	7400 Lyndale Ave S Ste 190  Richfield, MN 55423	Electronic Service	Yes	OFF_SL_20-867_Official CC Service List