

Three Waters Wind Project Public Information and Environmental Report Scoping Meeting

Jackson County Central High School
February 20, 2020

Meeting Purpose

- Explain the Commission's application review process
- Provide information about the proposed project
- Receive comments on the environmental report
- Answer questions about the application review process and project

Three Waters Wind Project - Agenda

1. Overview of Meeting and Permit Process

Minnesota Public Utilities Commission

2. Project Information

Three Waters Wind Farm, LLC

3. Environmental Review Process

Department of Commerce Energy Environmental Review & Analysis

4. Citizen Comments and Questions

Three Waters Wind Project – Commission Overview

- **Our Role**

- The Commission ensures there is enough power generated to keep our lights on and our homes warm.
- The Commission regulates investor-owned utilities to ensure Minnesotans are charged reasonable rates for power.
- Regulates Telecommunications carriers in the state.
- The Commission permits energy generation facilities and transmission lines for construction.

- **Permitting**

- Commission staff review evidence, build a record of information, analyze the information, and make recommendations to the five Commissioners who have final say about a given permit decision.
- The Commissioners, after conducting a public process including a public hearing, make the final decision about a project, which carries the weight of law.

Three Waters Wind Project – Decision Considerations

In making a *certificate of need* decision, the Commission considers factors listed in rule and statute.

Generally, factors include:

- Relationship of the proposed project to regional energy needs;
- Evaluation of possible alternatives for satisfying energy needs;
- Benefits of this facility, including its uses to protect or enhance environmental quality, and to increase reliability of energy supply in Minnesota and the region.

Minn. R. 7849.0120 and Minn. Stat. 216B.243, Subd. 3 (5)

Three Waters Wind Project – Decision Considerations

In making a Large Wind Energy Conversion System *siting* decision, the Commission considers factors listed in rule and statute.

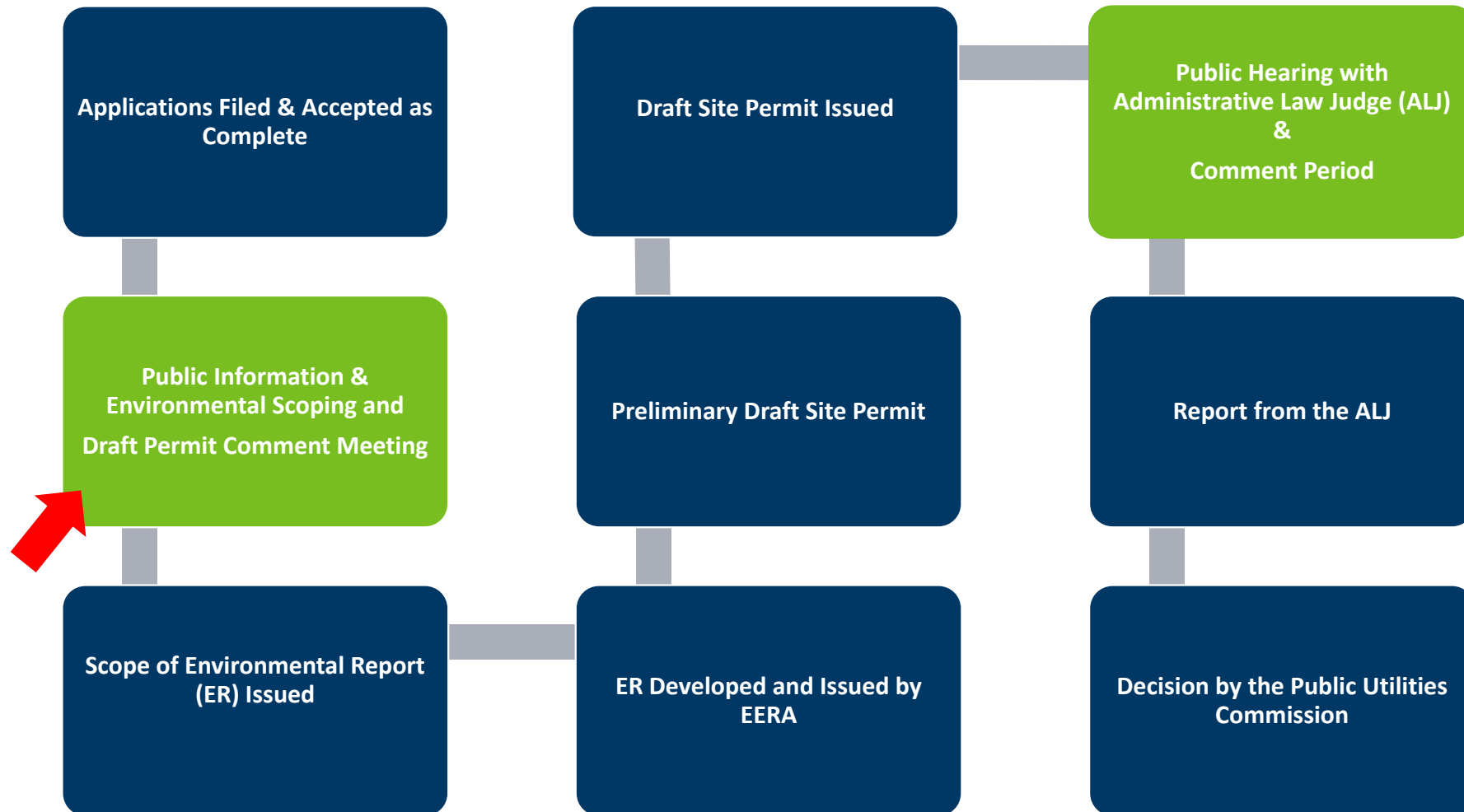
Generally, factors include:

- The Commission also must determine that a project is compatible with environmental preservation, sustainable development, and the efficient use of resources.

- **Minn. Rules Chpt. 7854.0200**

Three Waters Wind Project

Combined Certificate of Need and Site Permit Processes



Three Waters Wind Project – Timeline

Permitting Stage	<u>*ESTIMATED</u> Date
Application Filed	September 30, 2019
Application Accepted	December 23, 2019
Public Information/Scoping Meeting	February 20, 2020
Comment Period Closes	February 28, 2020
Preliminary Draft Site Permit and ER Scope	March 2020*
Draft Site Permit Issued	April/May 2020*
Intervener deadline	May 2020*
ER Issued	June 2020*
Public Hearing	June 2020*
Comment Period on Draft Site Permit	July 2020*
CN and Site Permit Decision	September/October 2020*

Three Waters Wind Project – How to Participate

How to Participate

- Provide written comments during the noticed comment periods.
- Give verbal or written input tonight.
- Attend the Public Hearing and provide verbal or written comments.

As a member of the public, at the Public Hearing you have the right to:

- Make an oral presentation
- Present documents as evidence
- Ask questions of agency staff and the applicant

Minn. Rules 7850.3800, subp. 3

Three Waters Wind Project – Contacts



Cezar Panait, Staff Analyst
Charley Bruce, Public Advisor



Rich Davis, Environmental Review Manager

Three Waters Wind Farm, LLC

Joe Sedarski, Senior Project Manager

Thank You

Cezar Panait – Facilities Planner

Cezar.Panait@state.mn.us

651-201-2207

Charley Bruce – Public Advisor

Charley.Bruce@state.mn.us

651-201-2251

THREE WATERS WIND FARM

JACKSON COUNTY, MINNESOTA

A project of





Three Waters Wind Farm: Project Basics





Project Overview

Capacity:

- Up to 201-megawatts (MWs).
- Proposed Turbine Size = 2.82 MW

Land:

- Project comprised of voluntary Wind Leases and Good Neighbor Agreements with approximately 300 landowners.

Proposed Project Footprint to Include:

- Up to 71 wind turbines in Jackson County.
 - Three Waters has reserved the right to site turbines at alternate turbine locations within Osceola and Dickinson County in Iowa. The determination as to the distribution of the Project within Minnesota and Iowa will be made prior to construction and is dependent upon discussions with landowners and land rights, applicable permitting requirements and processes, and final micro-siting and engineering.
- Access roads, underground 34.5-kV collector lines, underground fiber-optic cables for turbine communications, etc.
- An operations and maintenance (O&M) facility.
- Up to four permanent meteorological (MET) towers.

Proposed Project Substation:

- A 34.5 to 345-kV collection substation interconnecting with ITC Midwest's existing Raun-Lakefield 345-kV transmission line.
- Project transmission line is short distance between Project substation and ITC Midwest Raun-Lakefield 345-kV line.

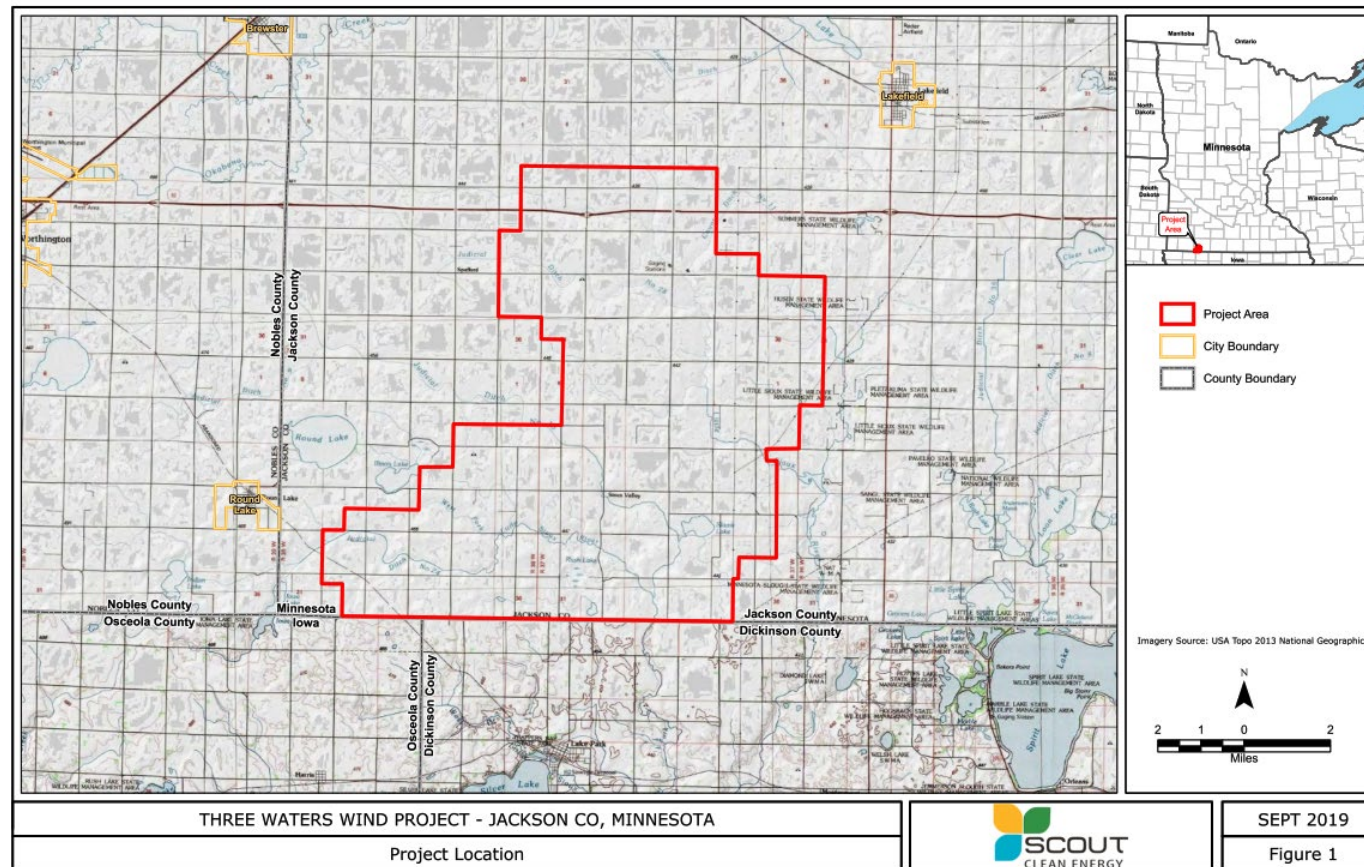
Power Purchase Agreement:

- Three Waters Wind Farm and the Minnesota Municipal Power Agency (MMPA) have executed a Power Purchase Agreement for the purchase of 200 MW.

Schedule:

- Start of construction: Q4 2020 or Q1 2021
- Commercial Operations Date (COD): Q4 2021

Project Area



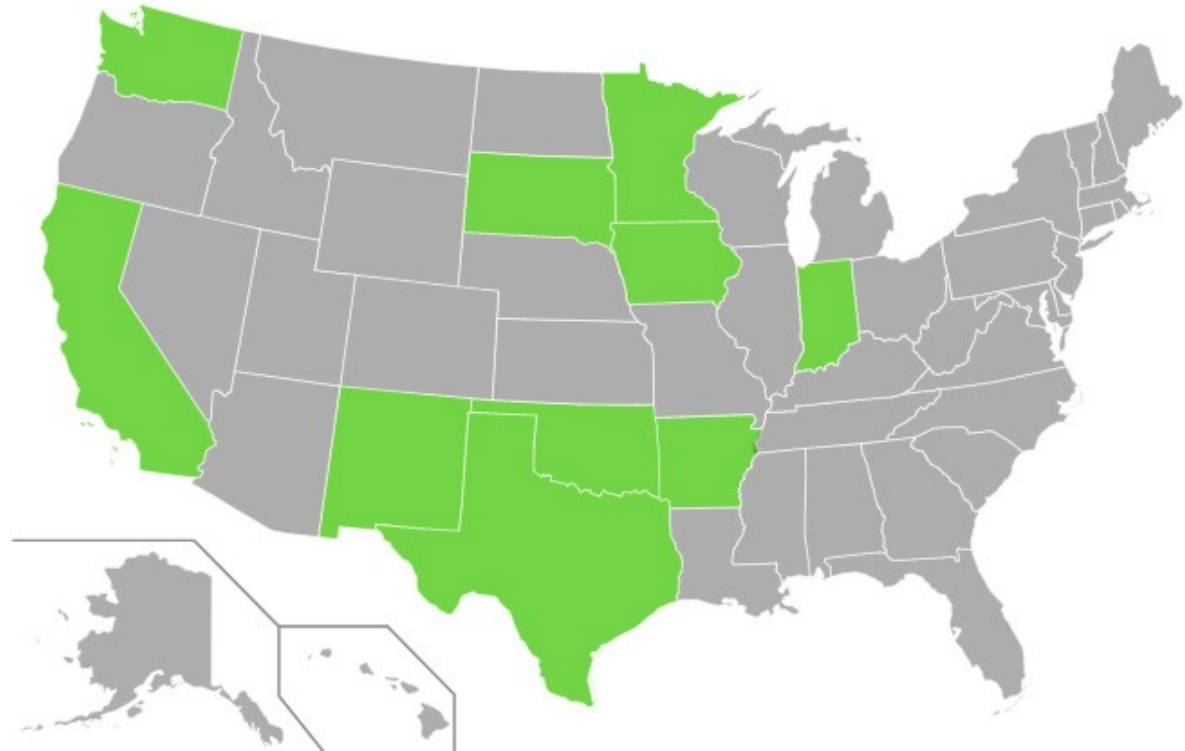
- The project is located southwest of the City of Lakefield in Jackson County, Minnesota.
- The Project area is approximately 48,000 acres and includes Ewington, Round Lake, Sioux Valley, Rost, Hunter, and Minneota Townships in Jackson County.



Project Owner: Background

Three Waters Wind Farm, LLC is a Delaware limited liability company and a wholly owned subsidiary of Scout Clean Energy. Scout Clean Energy is a North American renewable energy development company focused on utility scale wind development. The Scout Clean Energy team has an extensive track record developing large-scale wind energy projects. The Project will be developed, constructed, and operated by Scout Clean Energy.

Scout Clean Energy currently has projects under development in the following states and continues to expand:





Project Due Diligence and Commitments





Due Diligence

The project has coordinated with and continues to coordinate with agencies and stakeholders including:

- Federal Emergency Management Agency (FEMA)
- Natural Resources Conservation Service (NRCS)
- U.S Army Corps of Engineers (USACE)
- U.S Department of Agriculture (USDA)
- U.S Federal Aviation Administration (FAA)
- U.S Fish & Wildlife Service (USFWS)
- Minnesota Public Utilities Commission (MPUC)
- Minnesota Department of Commerce (MDOC)
- Minnesota Department of Natural Resources (MnDNR)
- Minnesota Board of Water and Soil Resources (BWSR)
- Minnesota Department of Agriculture (MDA)
- Minnesota Department of Transportation (MnDOT)
- Minnesota Department of Transportation/ Office of Aeronautics
- Minnesota State Historic Preservation Office (SHPO)
- Minnesota Pollution Control Agency (MPCA)
- Jackson County, MN
- Jackson Soil & Water Conservation District (Jackson SWCD)
- Ewington, Round Lake, Sioux Valley, Rost, Hunter, and Minneota Townships



Due Diligence (continued)

The project has conducted the following Environmental Studies, Surveys and Analysis including:

Study	Date	Status	Study	Date	Status
Baseline Avian Study, Year 1 Studies	March 2017 to February 2018	Complete	Wetland/Waterbody Desktop Assessment	May and September 2019	Complete
Baseline Avian Study, Year 2 Studies	March 2018 to February 2019	Complete	Wetland/Waterbody Delineation/Field Survey	Spring or Fall 2020	Pending
Bat Activity Study 2017	July to November 2017	Complete	AM and FM Radio Report	May 2019	Complete
Bat Activity Study 2018	April to October 2018	Complete	Land Mobile & Emergency Services Report	April 2019	Complete
Bat Summer Presence/Absence Survey	June 2017	Complete	Off-Air TV Analysis	April 2019	Complete
Eagle and Raptor Nest Surveys 2017 (Year 1)	March and May 2017	Complete	Microwave Study	May 2017 and April 2019	Complete
Eagle and Raptor Nest Surveys 2018 (Year 2)	April and May 2018	Complete	Obstruction Analysis & Airspace Analysis	August 2018 January 2020	Complete
Habitat Mapping (included with SCS)	September 2019	Complete	Sound Monitoring & Modeling Study	May-June 2019 September 2019 February 2020	Complete
Site Characterization Study	September 2019	Complete	Shadow Flicker Analysis	May-June September 2019	Complete
Bird and Bat Conservation Strategy	September 2019	Complete			



Project Commitments

- Compliance with state setbacks “MPUC General Permit Standards”:
 - 1,320 feet wind turbine setback from currently occupied residences.
 - 3 x rotor diameter on non-prevailing wind axis (1,251 ft) and 5 x rotor diameter on prevailing wind axis (2,085 ft) setback from non-participating project boundaries.
 - No closer than 250 ft from the edge of public road rights-of-way.
 - 1.1 times wind turbine tip height setback from existing overhead distribution and transmission lines.
 - Shadow flicker commitment limits shadow flicker from wind turbines at currently occupied residences to 30 hours per year or less, unless waived by the owner of the occupied residence.
 - Project wind turbine noise commitment to 47 dBA or less at occupied residences.
 - Wind turbine lighting commitment to comply with applicable FAA requirements and utilize an Aircraft Detection Lighting System (ADLS).



Minimization Measures

- Bird and Bat Conservation Strategy (BBCS) will be prepared in accordance with the USFWS Wind Energy Guidelines that will be implemented to minimize impacts to avian and bat species during construction and operation of the Project.
- Conduct post-construction fatality monitoring for 1 year to assess impacts.
- Post-construction studies to evaluate direct and indirect effects of adverse habitat impacts and assess how they may be addressed (e.g post-construction displacement and/or use studies, curtailment effectiveness studies, etc.
- Avoid siting turbines, O&M Facility, Project Laydown Yard, and Project Substation in wetlands and waterbodies.
- Avoid siting turbines, O&M Facility, Project Laydown Yard, and Project Substation in USFWS Grassland and Wetland Easements.
- Boring collection lines under waterbodies and applicable wetlands.
- Fully restoring construction temporary impacts to pre-construction conditions.



Safety Commitments

The anticipated life of the Project is approximately 35 years (including a potential repower and/or retrofit of the turbines and power system with upgrades based on new technology):

- Before construction and during operations the Project will coordinate with local and county emergency management to protect the Project in event of natural, manmade, or other incidents.
- The Project will register each turbine location, O&M facility, Project Laydown Yard, and Project Substation with the rural (county) identification/addressing (fire number) and 911 systems.
- At the end of the Project's life, decommissioning will be the responsibility of Three Waters Wind Farm, LLC. Financial assurances, as a protection, will be put in place as required in the wind leases and as a requirement of the MPUC. Decommissioning will end after the Project area is restored.



Three Waters Wind Farm Project Benefits





Economic Development

Landowner Lease Payments

- Over its 35-year life, Three Waters Wind Farm will generate over \$25 million in landowner payments to participating landowners.

Local Spending During Construction

- During construction, about 200 workers will be living and shopping in the local area and surrounding towns.
- Several key construction materials will be sourced locally, including water, gravel and road materials.

Long-term Jobs

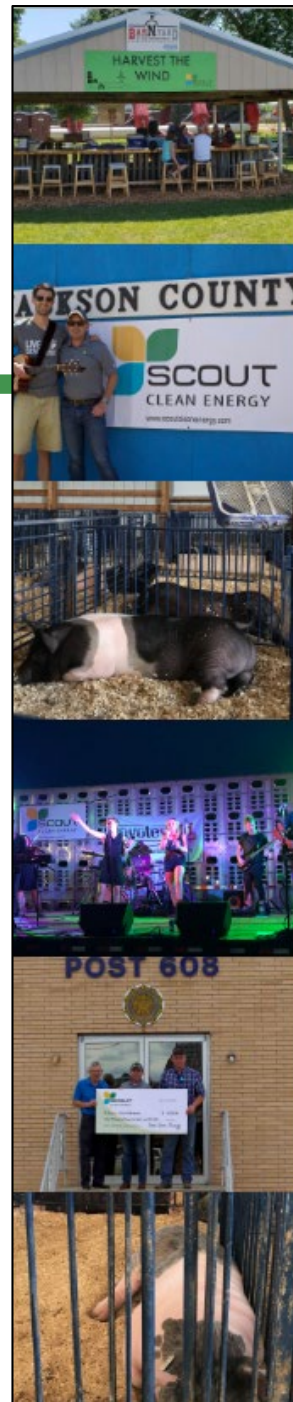
- Throughout operation, Three Waters Wind Farm will employ about 10 full-time operations and maintenance employees.
- The wind turbine technicians will work out of an Operations & Maintenance (O&M) facility located within the Project area.

County and Township

- Over the life of the Project, Jackson County and the affected Townships will benefit from approximately \$35.1 million in direct economic benefit.



Community Outreach and Support



Proud To Be Actively Involved In The Jackson Community

2019 Community Involvement:

Jackson County Farm & Home Show *Exhibitor*
126th Annual Jackson Firefighters Dance *Sponsor*
Rhythm of the River *Sponsor*
Okabena July 4th Fireworks *Event Sponsor*
Jackpot Hog Show *Sponsor*
Minnesota State Pork Chop Open *Hole Sponsor*
Get Up and Bowl (Special Olympics) *Sponsor*
Dwaine Hanson Race Car *Sponsor*
Skylar Prochaska Sprint Car *Sponsor*
Chamber of Commerce (Jackson co.) *Member*
Farmer's Appreciation Days *Sponsor*
Jackson County Fair Concert *Jacob Daniels Sponsor*
Jackson County Fair *Beer Garden Sponsor*
Jackson County Youth 4H Livestock Auction *Participant*
Jackson Motorplex *Sponsor*
More announcements to come...

2018 Community Involvement:

Jackpot Hog Show *Sponsor*
Jackson County Fair *Beer Garden Sponsor*
Jackson County Youth 4H Livestock Auction *Partic.*
Purple Ribbon Auction *Sponsor*
Jackson County Food 4 Kids *Sponsor*
Farmer's Appreciation Days *Sponsor*
Jackson Motorplex *Sponsor*
Skylar Prochaska Sprint Car *Sponsor*
Lakefield Oktoberfest *Sponsor*
Chamber of Commerce (Jackson co.) *Member*



Three Waters Wind Farm: Project Components





Wind Turbines & Permanent MET Towers



Model Name	Current Nameplate Capacity (MW)	Hub Height (meters/feet)	Rotor Diameter (meters/feet)	Tip Height (meters/feet)	Swept Area (sq. meters/sq. feet)
GE 2.82/127	2.82	89/292	127/417	152/499	12,668/ 136,354
GE 2.82/127	2.82	114/374	127/417	178/584	12,668/ 136,354
GE3.03/140	3.03	110/361	140/459	180/591	15,395/ 165,698

Wind Turbines & Permanent MET Towers



Up to four permanent MET Towers will be installed with the same hub height as the wind turbines to monitor the production of the turbines.



Access Roads and Underground Collection



Permanent access road will be approximately 16' wide.



34.5- kV underground trench for collection lines will be approximately 42" deep.

Turbine Foundations and Assembly



Substation and O&M Building



O&M Building Construction



Substation Construction

Conclusion





Three Waters Wind Farm Jackson County

Public Information and Scoping Meeting

Richard Davis | Environmental Review Manager

Energy Environmental Review and Analysis (EERA)

DOC-EERA Presentation Topics

- The Project
 - Three Waters Wind Farm
- The State Environmental Review and Permitting Process
- Public Participation
 - Future Opportunities to Comment
 - Submitting Comments
- Tonight's Procedure and Speaker Guidelines

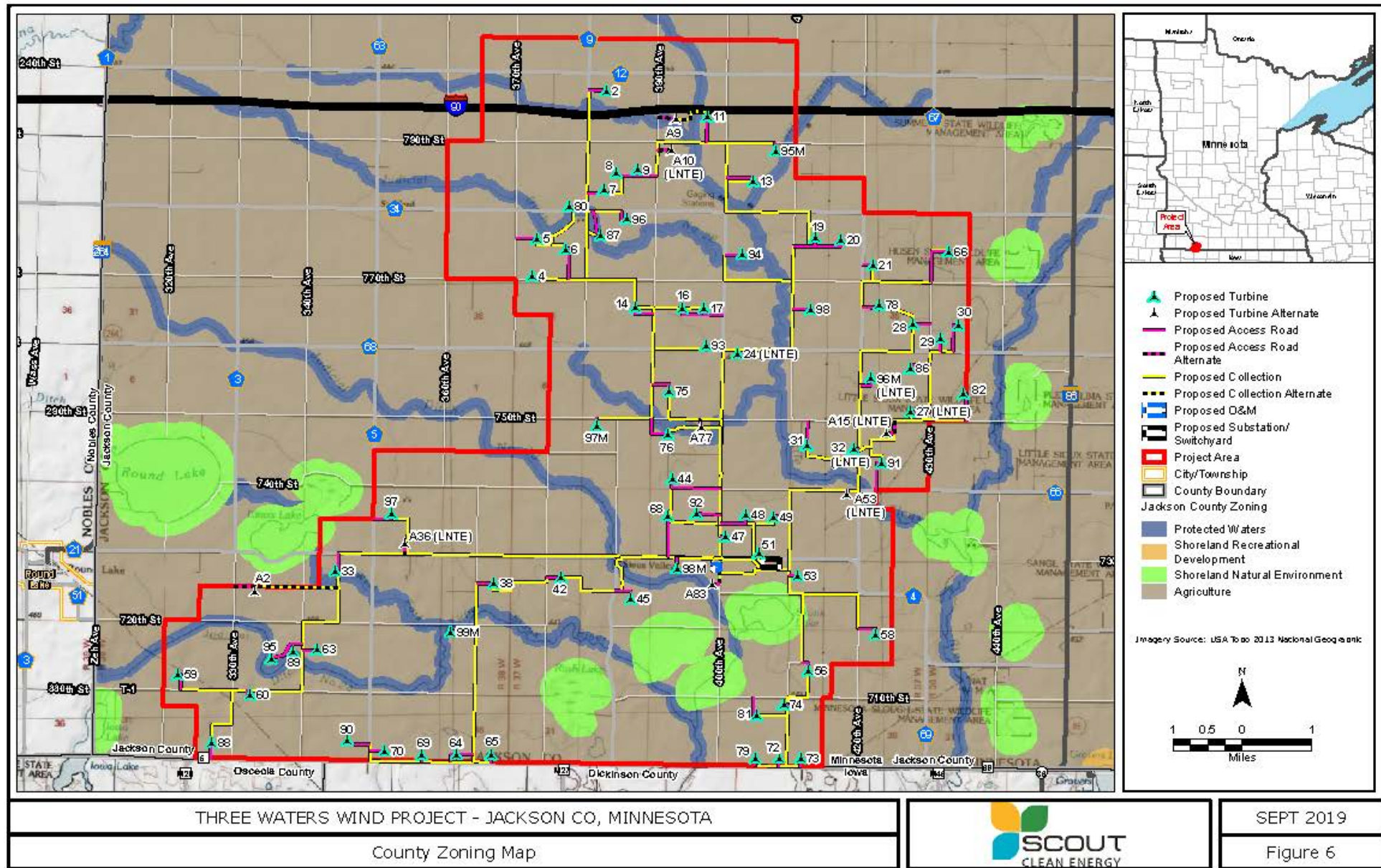
Three Waters Wind Farm – Jackson County, Minnesota

➤ 201 MW Proposed in Minnesota

- 66 - 71 Turbines
- Associated Facilities
 - Access Roads
 - Operation and Maintenance (O&M) Facility
 - Temporary Construction laydown yard and concrete batch plant
 - Collector Lines
 - Project Substation
 - 300 foot 345 kV transmission line
 - Switchyard/Interconnection Site

➤ Iowa Portion of the Project

- Potentially up to 100 MW
- Not under the State of Minnesota's Jurisdiction



Application Availability

-]
[htt](#)

[761/](#)

- (
[htt](#)

19-154

-]

11 3rd Street, Jackson, MN

State Environmental Review - CN

- Certificate of Need (CN)
 - Environmental Report (ER)
 - MN Rules Chapter 7849
 - Looks at the proposed project's impacts
 - Impact mitigation measures
 - Alternatives to the proposed project
 - System Alternatives
 - Must mitigate an impact and meet the identified need of the project
 - Size, Type, and Timing
 - ER Scoping
 - “Table of Contents”
 - What do we need to know about, or what should we analyze?
 - Input from other agencies, local governments, and the public

State Environmental Review – LWECS Site Permit

- LWECS Site Permit
 - Project application is the primary environmental review document
 - Identifies resources that could be impacted by the proposed project and must be evaluated
 - MN Rules Chapter 7854
 - Specifically quantifies and evaluates the proposed project's impacts
 - Includes mitigation measures
 - EERA reviews the application, including appendices
 - We work directly with the applicant and their consultants if we identify any areas that need additional information or additional analysis
 - EERA takes comments from other agencies and the public
 - “Permit-ability”
 - Local interests and concerns
 - Comments and Recommendation, Preliminary Draft Site Permit Development

Permitting Process

Certificate of Need & LWECS Site Permit Process—12 mo.



* Formal contested case hearing is held only if requested at public meeting/comment stage and then ordered by the Commission

Future Public Participation Opportunities

➤ The Scoping/Information Meeting

- Tonight – February 20, 2020

➤ Public Hearing in Local Area

- Anticipated Late June 2020

➤ Commission Hearing in St. Paul

- Anticipated Late September 2020

COMMENT PERIOD DEADLINE

Friday, February 28, 2020

Submitting Comments

- **EERA Website**

<https://mn.gov/eera/web/project/13761/>

- **Email**

richard.davis@state.mn.us

- **Fax**

651-539-0109

Docket Numbers –

Certificate of Need - 19-154

Site Permit - 19-576

U.S. Mail

Richard Davis

Environmental Review Manager

Department of Commerce

Energy Environmental Review and Analysis

85 7th Place East, Suite 280

St. Paul, MN 55101-2198

Topics to Address with Comments or Questions

- What potential human and environmental impacts of the proposed project should be assessed in the environmental report and addressed in the preliminary draft site permit prepared for the project?
- What are the possible methods to address (avoid, minimize, or mitigate) the potential impacts of the proposed project?
- Are there other ways to meet the stated need for the project, instead of the proposed wind farm? What system alternatives to the project should be assessed in the environmental report?
- Are there any unique characteristics of the proposed site or the project that should be considered?
- Are there any items missing or mischaracterized in the Certification of Need or Site Permit Applications?
- Are there other project related issues or concerns?

Tonight's Procedure and Speaker Guidelines

- One speaker at a time
- Five (5) minutes per speaker (opportunity for more at the end if time allows)
- State & spell name for court reporter
- Please maintain respect for others
- Focus comments
 - Certificate of Need Issues
 - Preliminary Draft Site Permit issues

Thank You!

Richard Davis

richard.davis@state.mn.us

651-539-1846

507-380-6859