

Figures

Figure 1. Project Area Overview

Figure 2. Preferred Route Location – Topography

Figure 3. Project Phases

Figure 4. Existing Right-of-way Paralleling

Figure 5. Preferred Route Location – Aerial Photography

Figure 6. Route Alternatives Detailed

Figure 7. Land Type Associations

Figure 8. Zoning

Figure 9. Land Cover

Figure 10. Recreation

Figure 11. Soil Associations

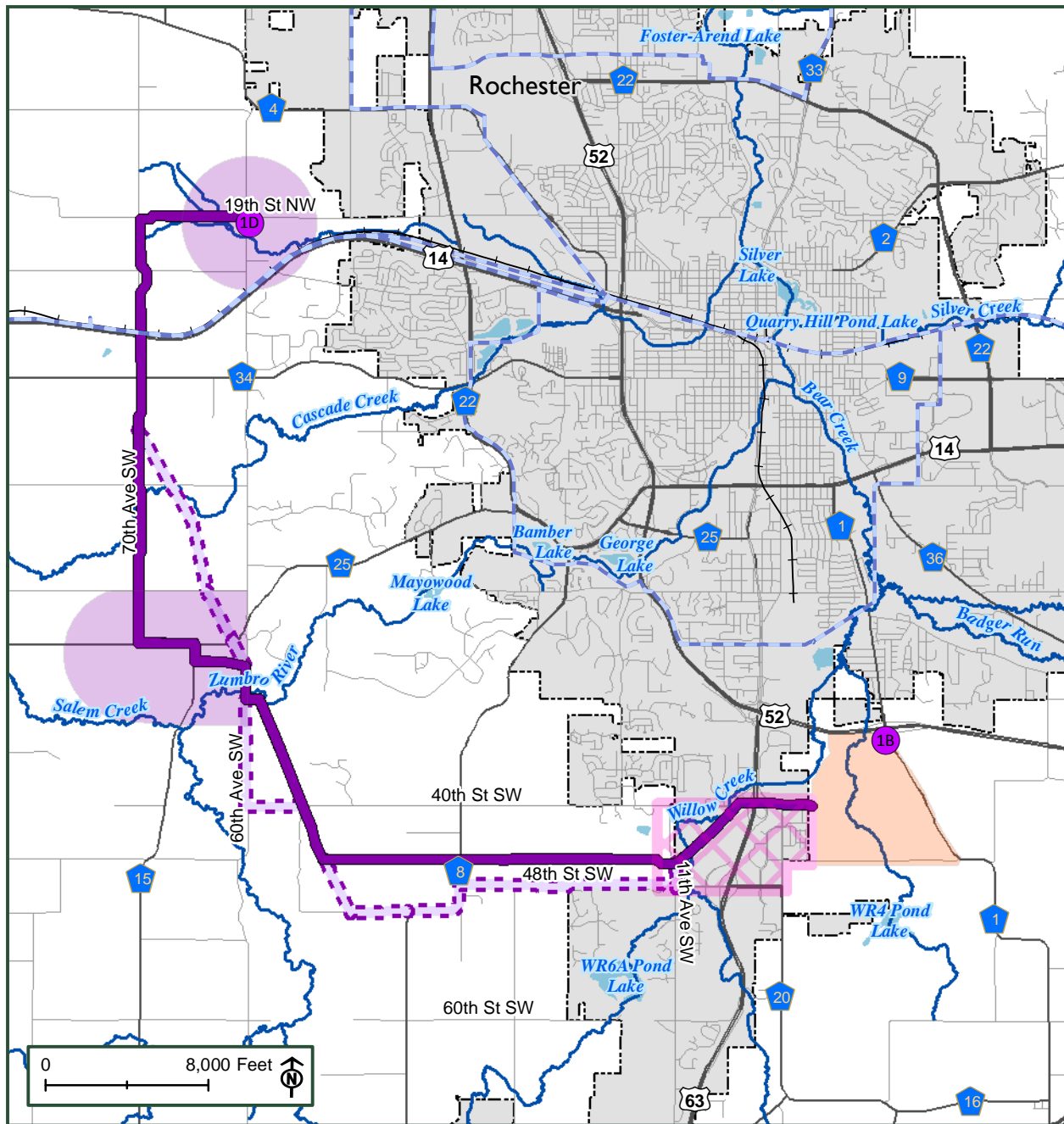
Figure 12. Prime Farmland

Figure 13. Route Segments Considered

Figure 14. Route Segments – Aerial Photography

Figure 15. Route Alternatives Overview

This page intentionally left blank.

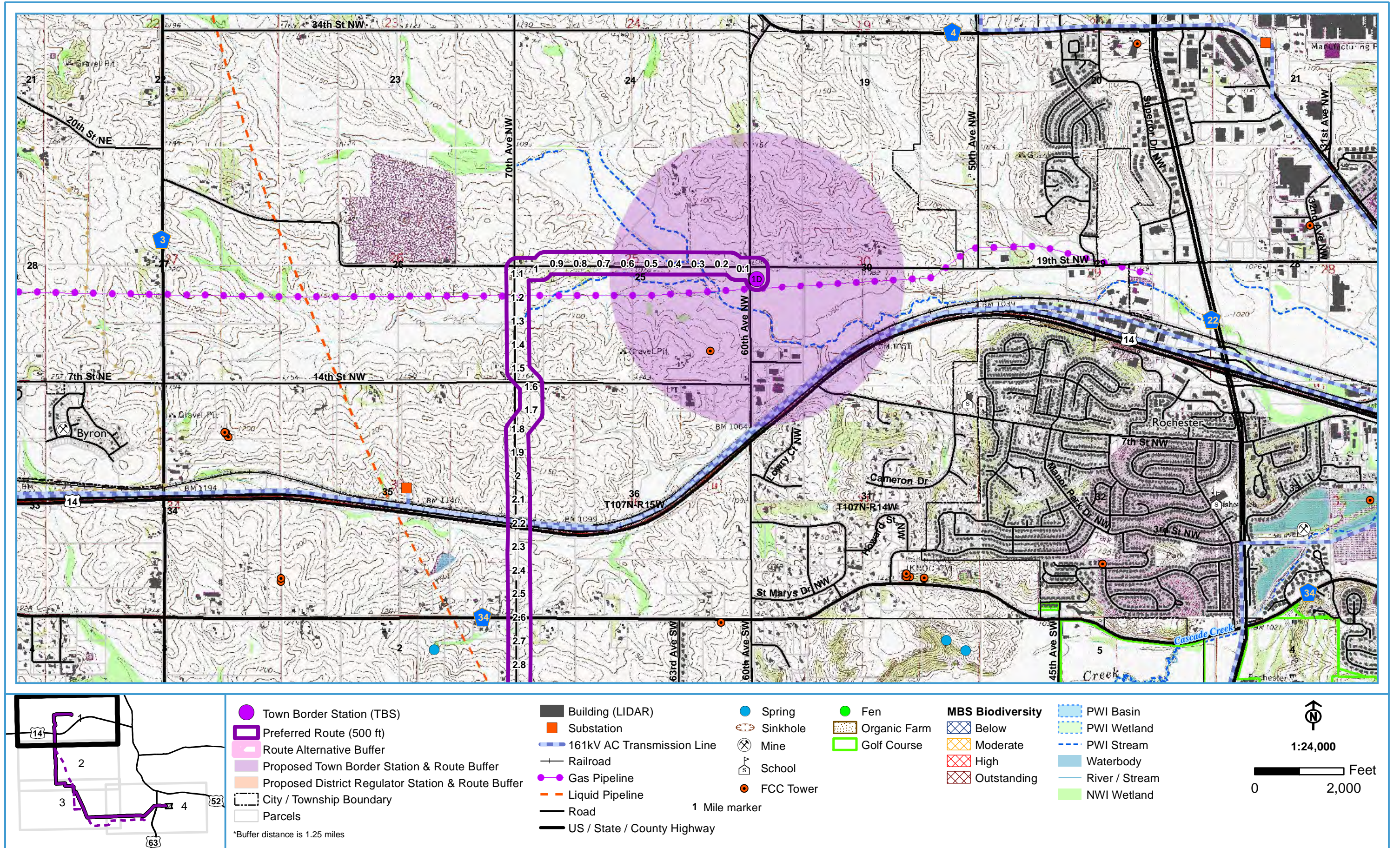


Legend

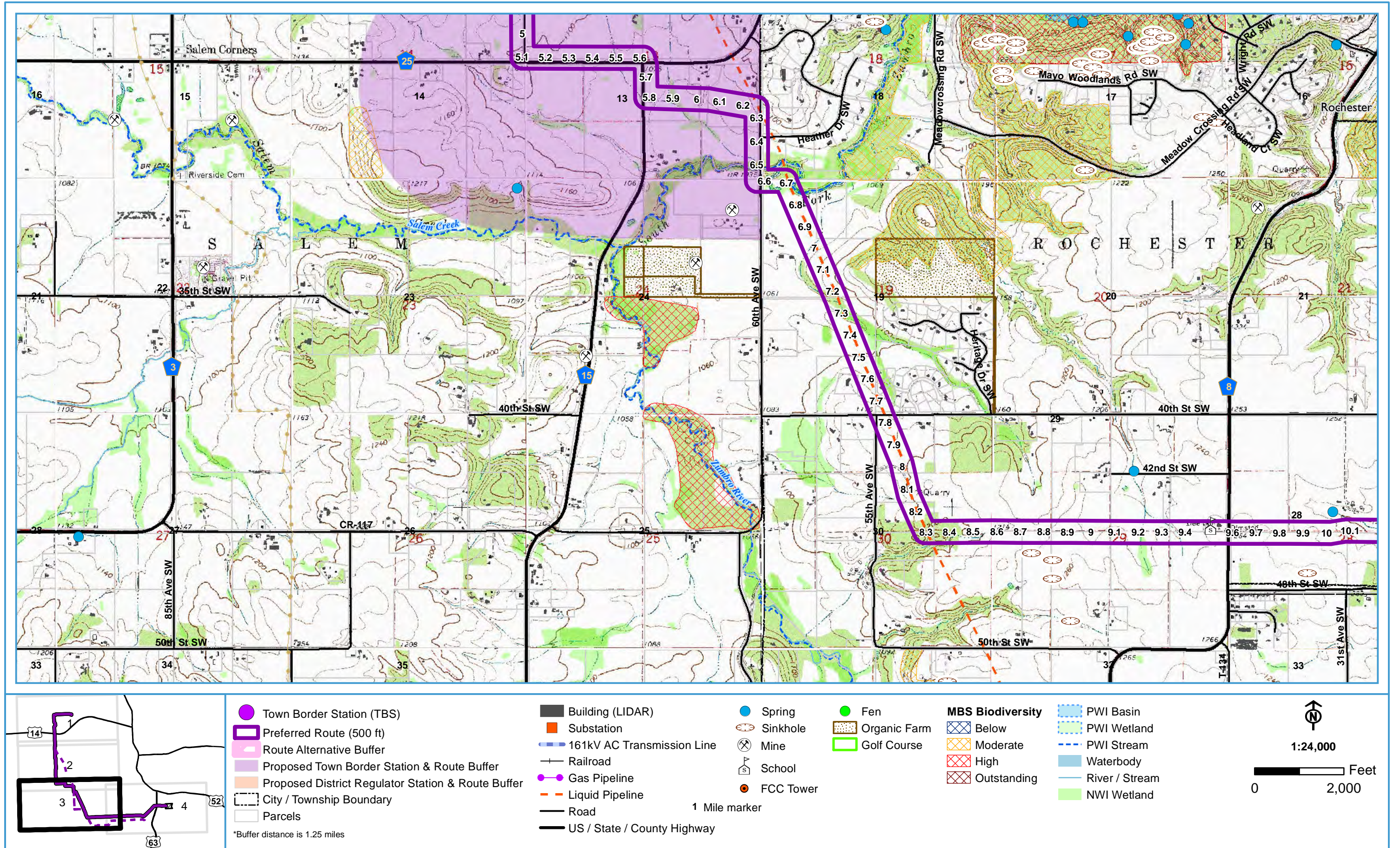
- | | | | |
|--|--|--|-----------------------------|
| | Preferred Route | | PWI Stream |
| | Alternate Route | | Waterbody/NWI Wetland |
| | Town Border Station (TBS) | | City / Township Boundary |
| | Route Alternative Buffer | | Railroad |
| | Proposed Town Border Station & Route Buffer | | 161kV AC Transmission Line |
| | Proposed District Regulator Station & Route Buffer | | Road |
| | | | US / State / County Highway |

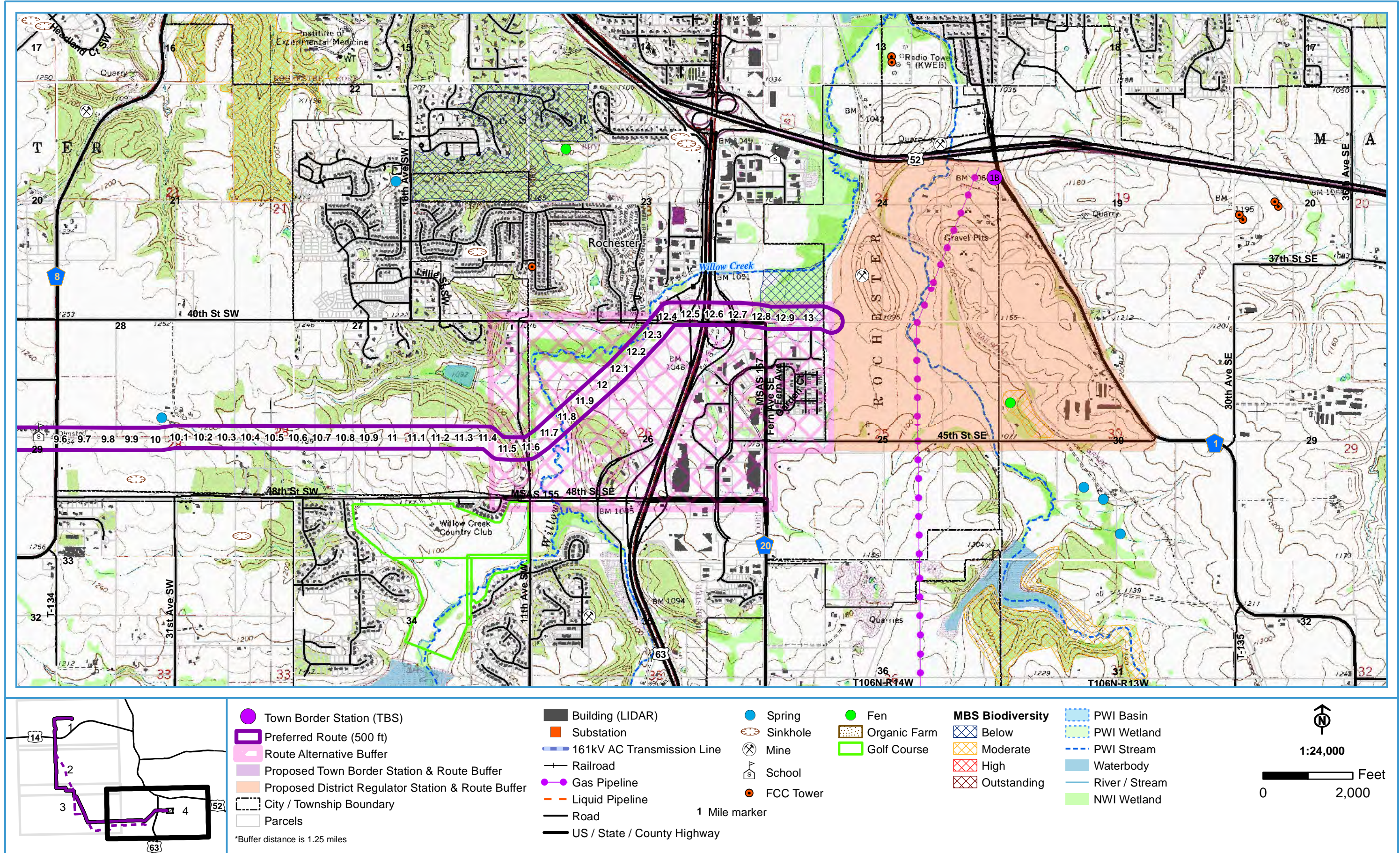
*Buffer distance is 1.25 miles

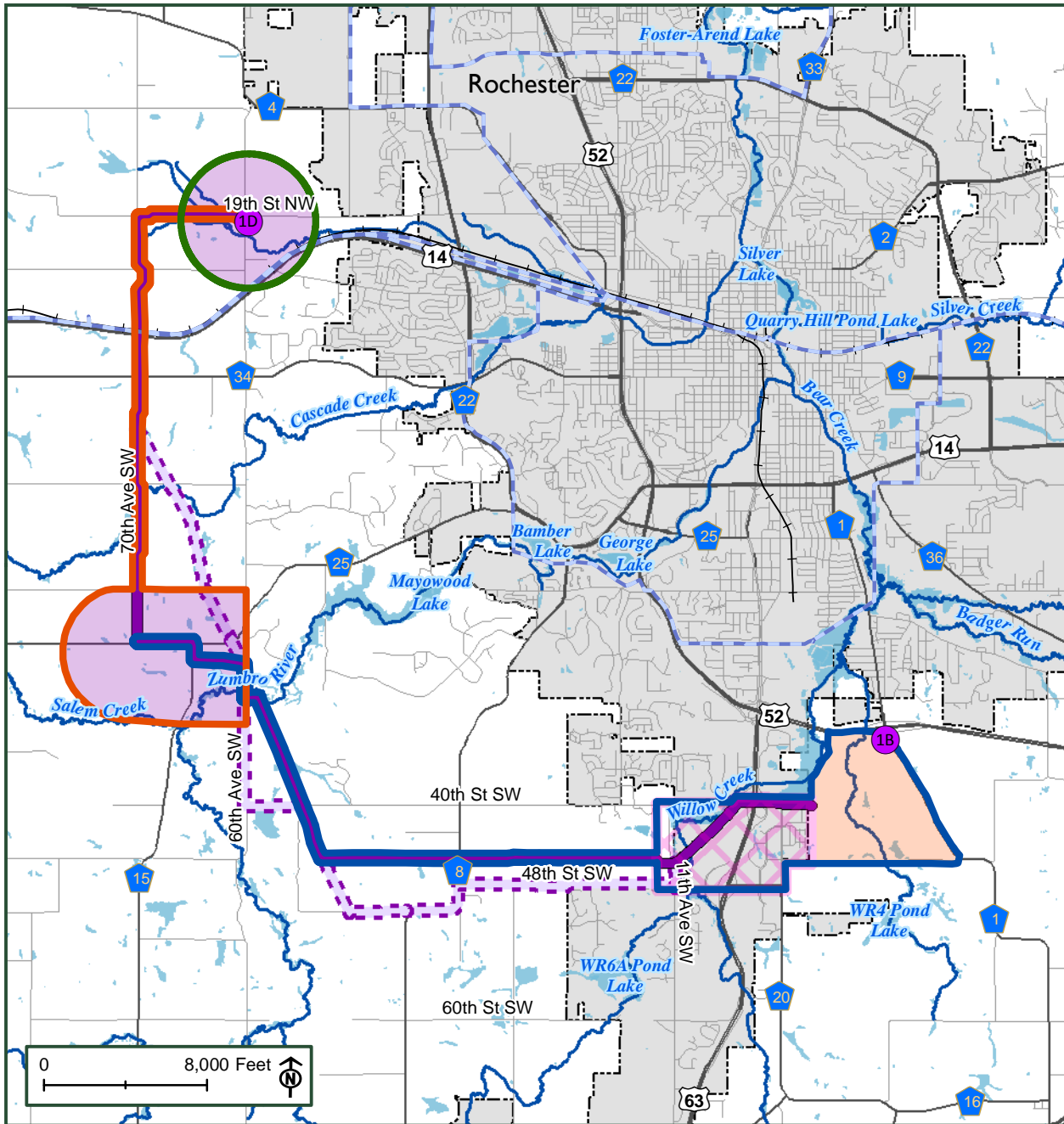
This page is intentionally left blank.







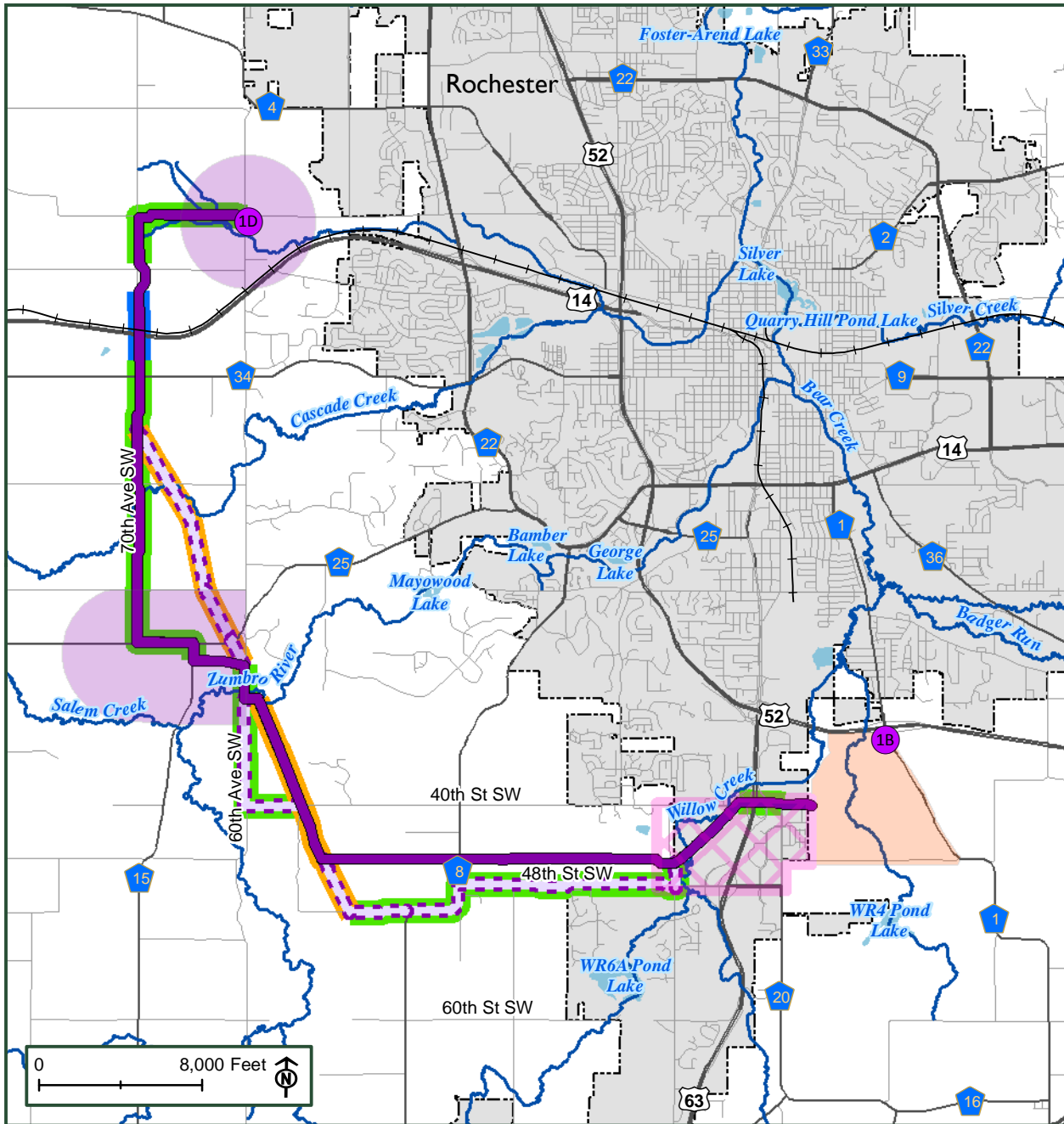




Legend

- | | | |
|--|--------------------------|-----------------------------|
| Preferred Route | Phase 1 - 2017 | 161kV AC Transmission Line |
| Alternate Route | Phase 2 - 2019 | Railroad |
| Town Border Station (TBS) | Phase 3 - 2022 | Road |
| Route Alternative Buffer | PWI Stream | US / State / County Highway |
| Proposed Town Border Station & Route Buffer | Waterbody/NWI Wetland | |
| Proposed District Regulator Station & Route Buffer | City / Township Boundary | |

*Buffer distance is 1.25 miles

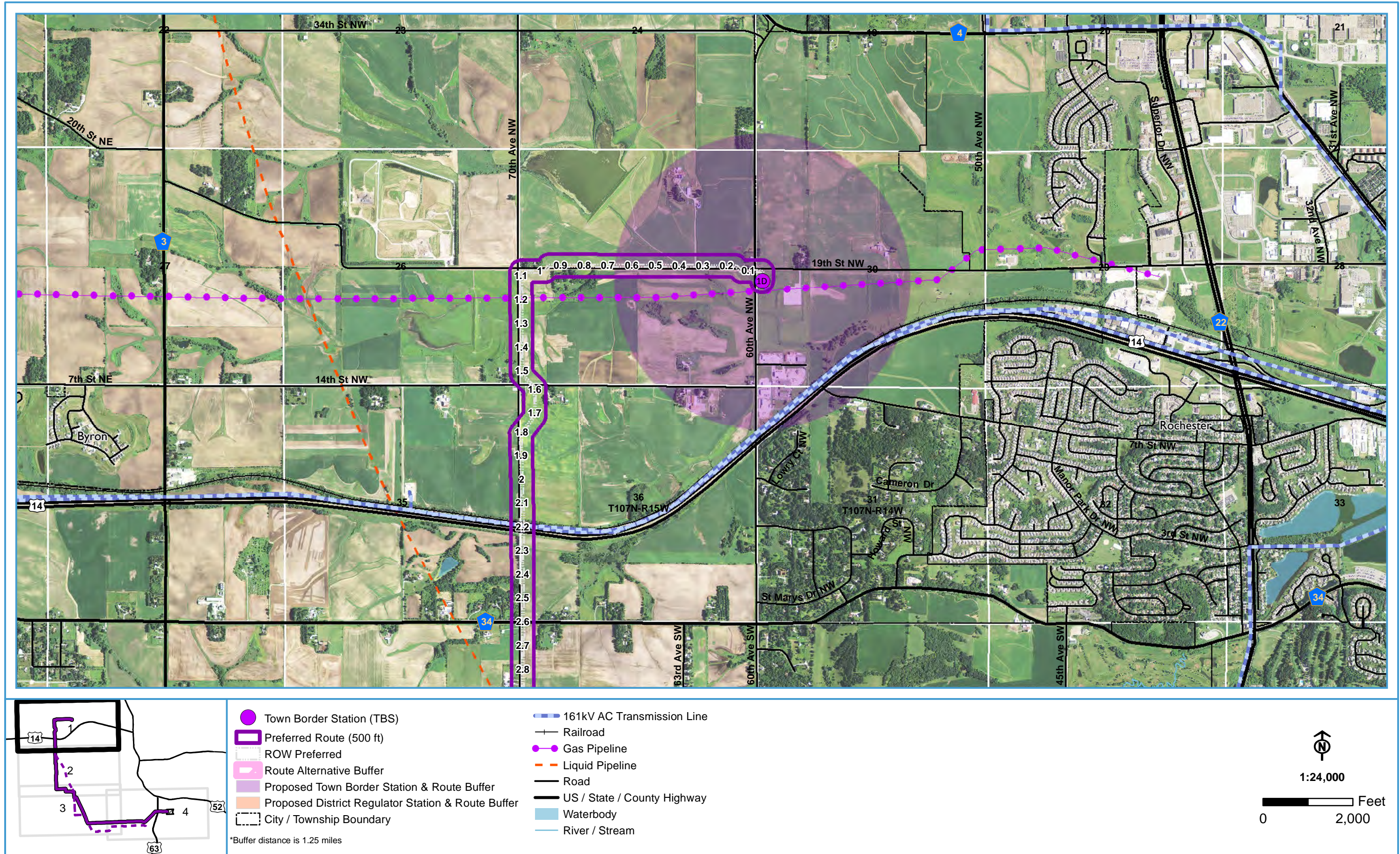


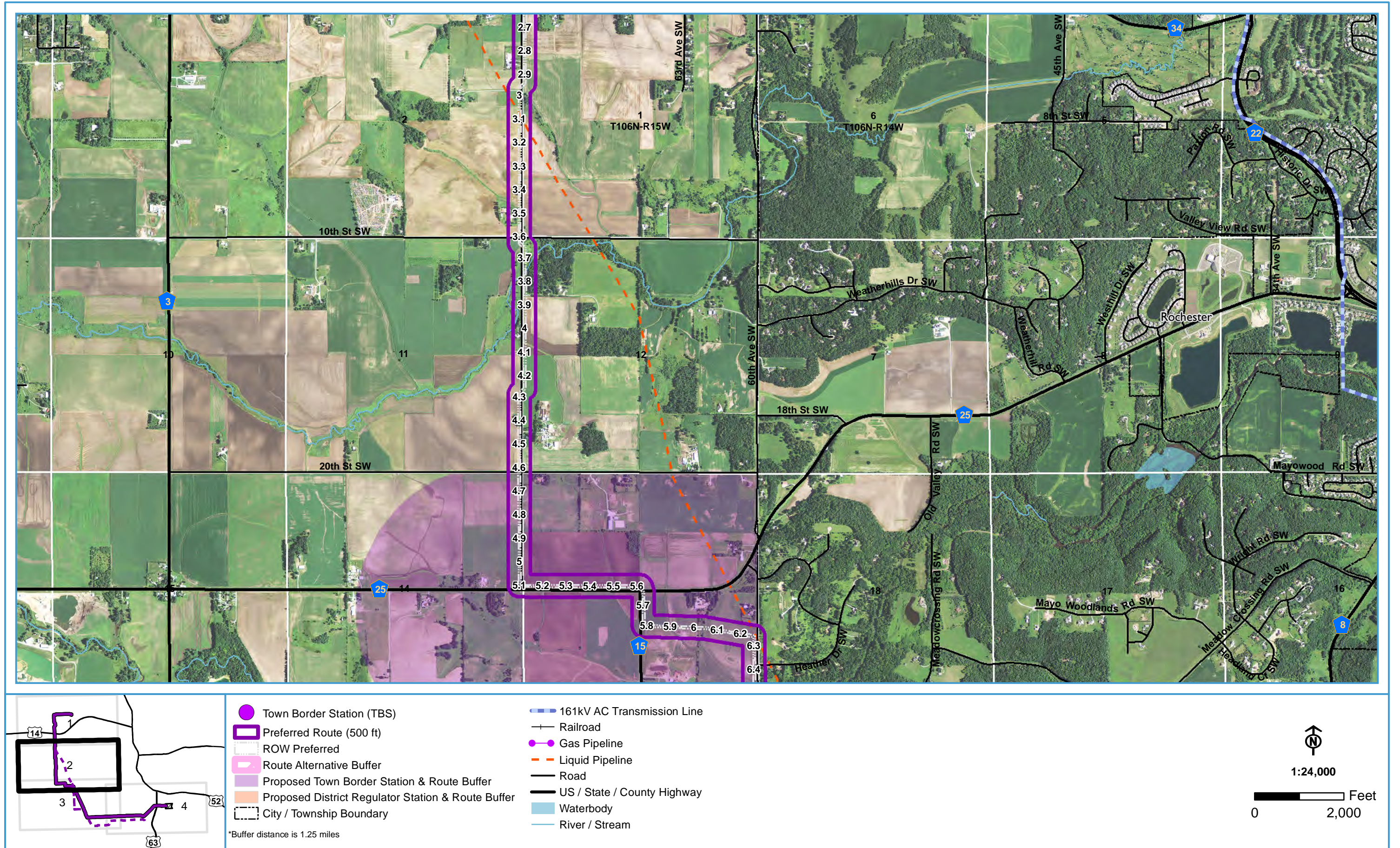
Legend

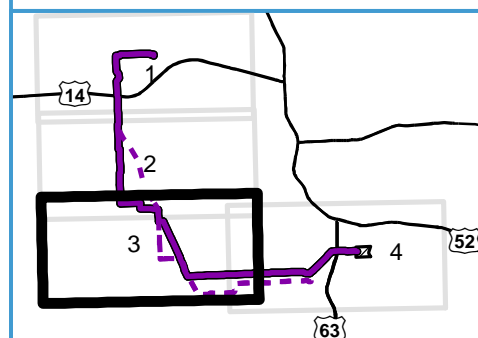
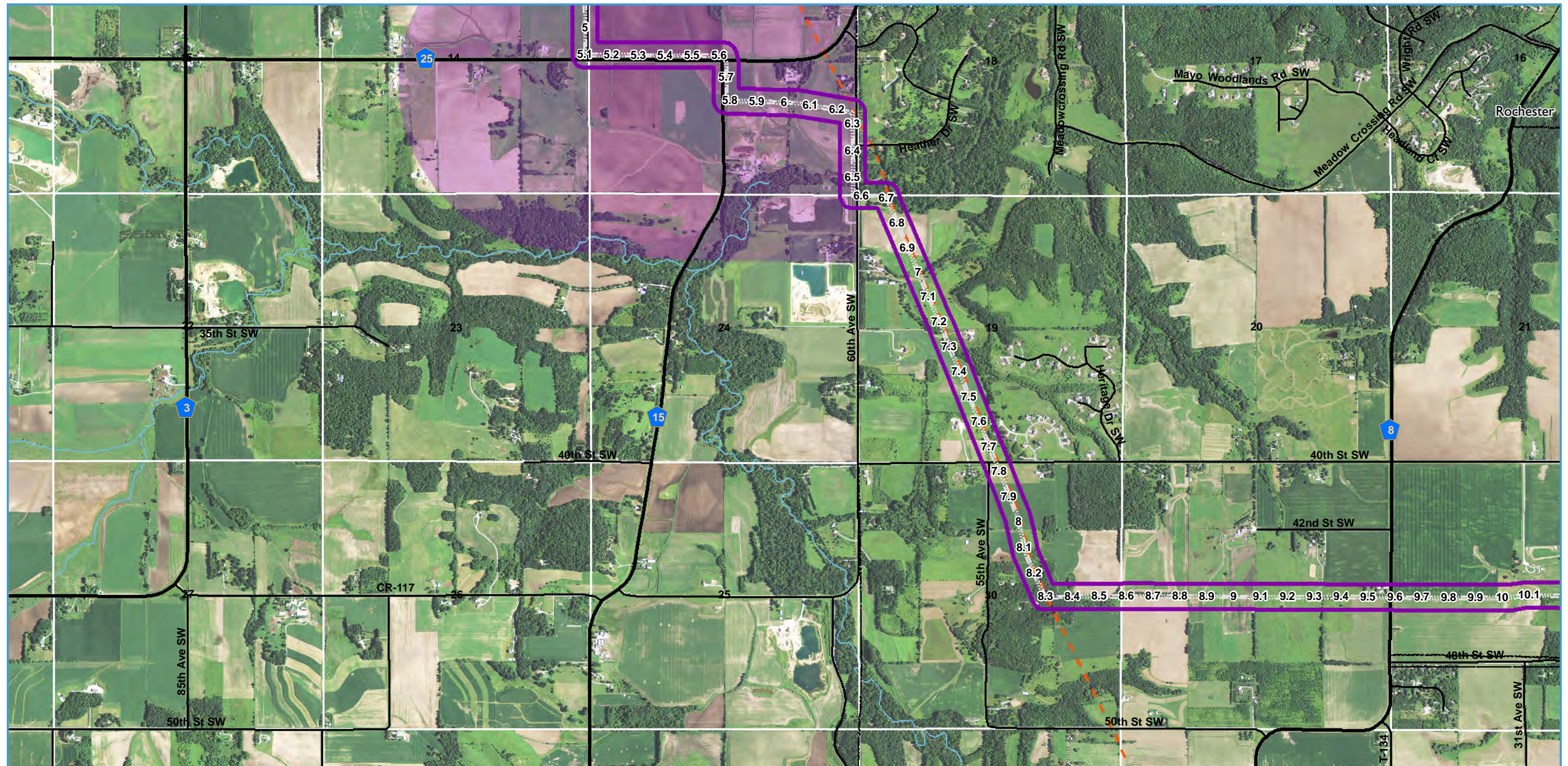
- | | | | |
|---------------------------|--|---------------------------------|-----------------------------|
| Preferred Route | Route Alternative Buffer | Existing ROW Paralleling | PWI Stream |
| Alternate Route | Proposed Town Border Station & Route Buffer | Electrical Distribution | Waterbody/NWI Wetland |
| Town Border Station (TBS) | Proposed District Regulator Station & Route Buffer | Pipeline | City / Township Boundary |
| | | Road | Railroad |
| | | | Road |
| | | | US / State / County Highway |

*Buffer distance is 1.25 miles

Path: \\mspe-gis-file\GISProj\050_den\232026_MERC\map_docs\RoutePermit\Figure_04_ROW_Sharing_8x11_P.mxd

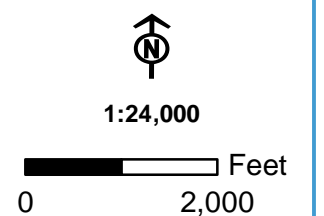




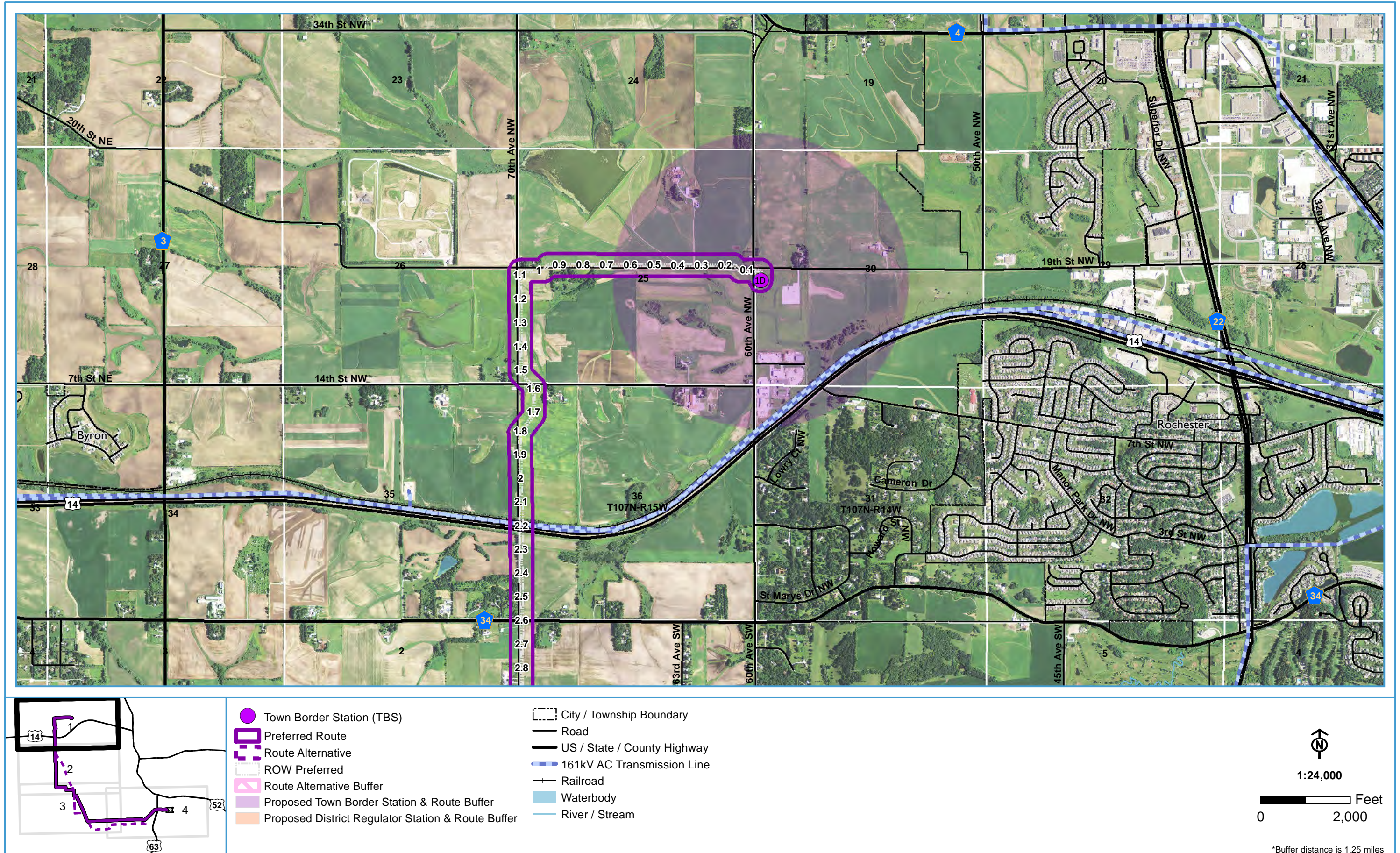


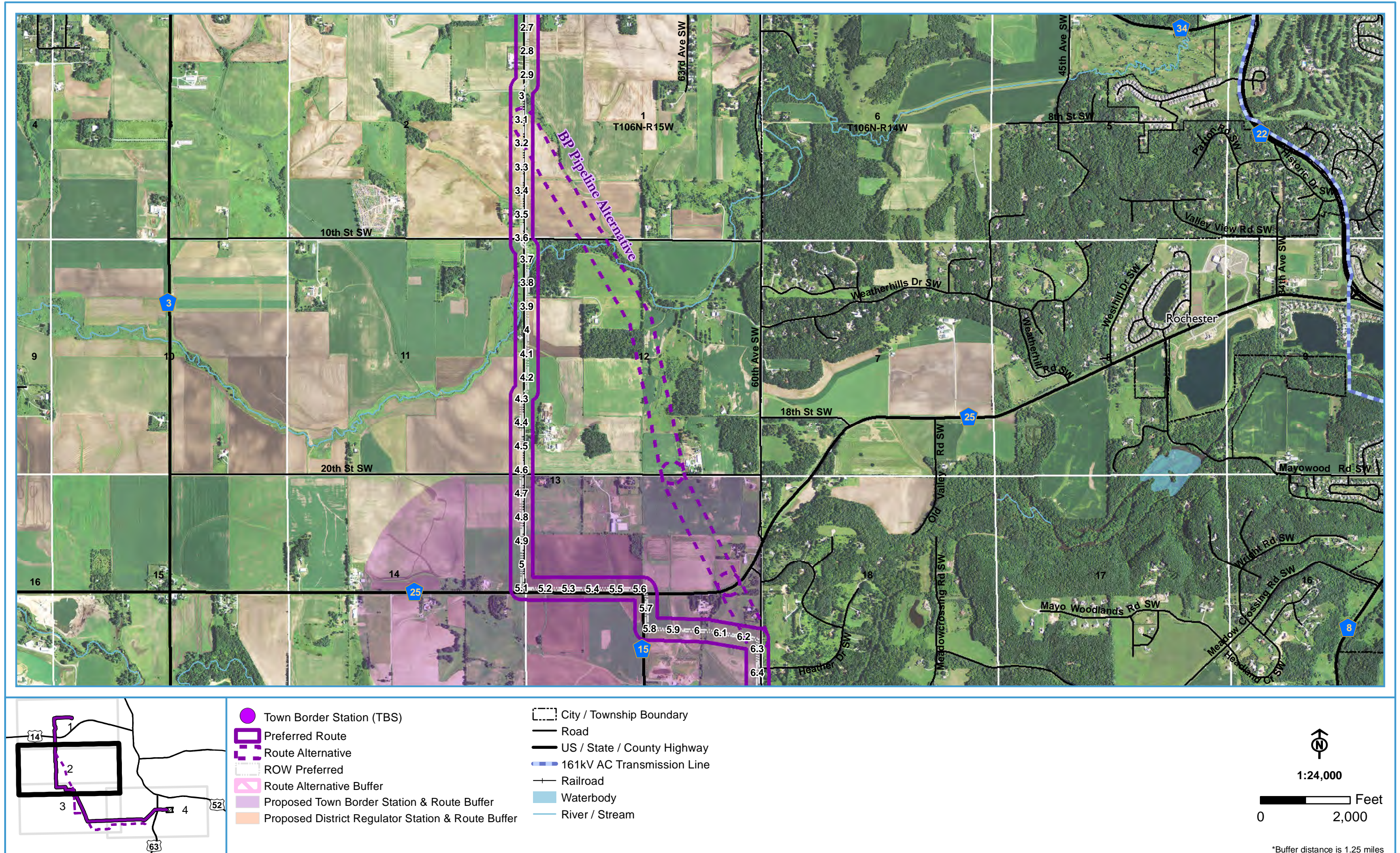
- Town Border Station (TBS)
 - Preferred Route (500 ft)
 - ROW Preferred
 - Route Alternative Buffer
 - Proposed Town Border Station & Route Buffer
 - Proposed District Regulator Station & Route Buffer
 - City / Township Boundary
- *Buffer distance is 1.25 miles

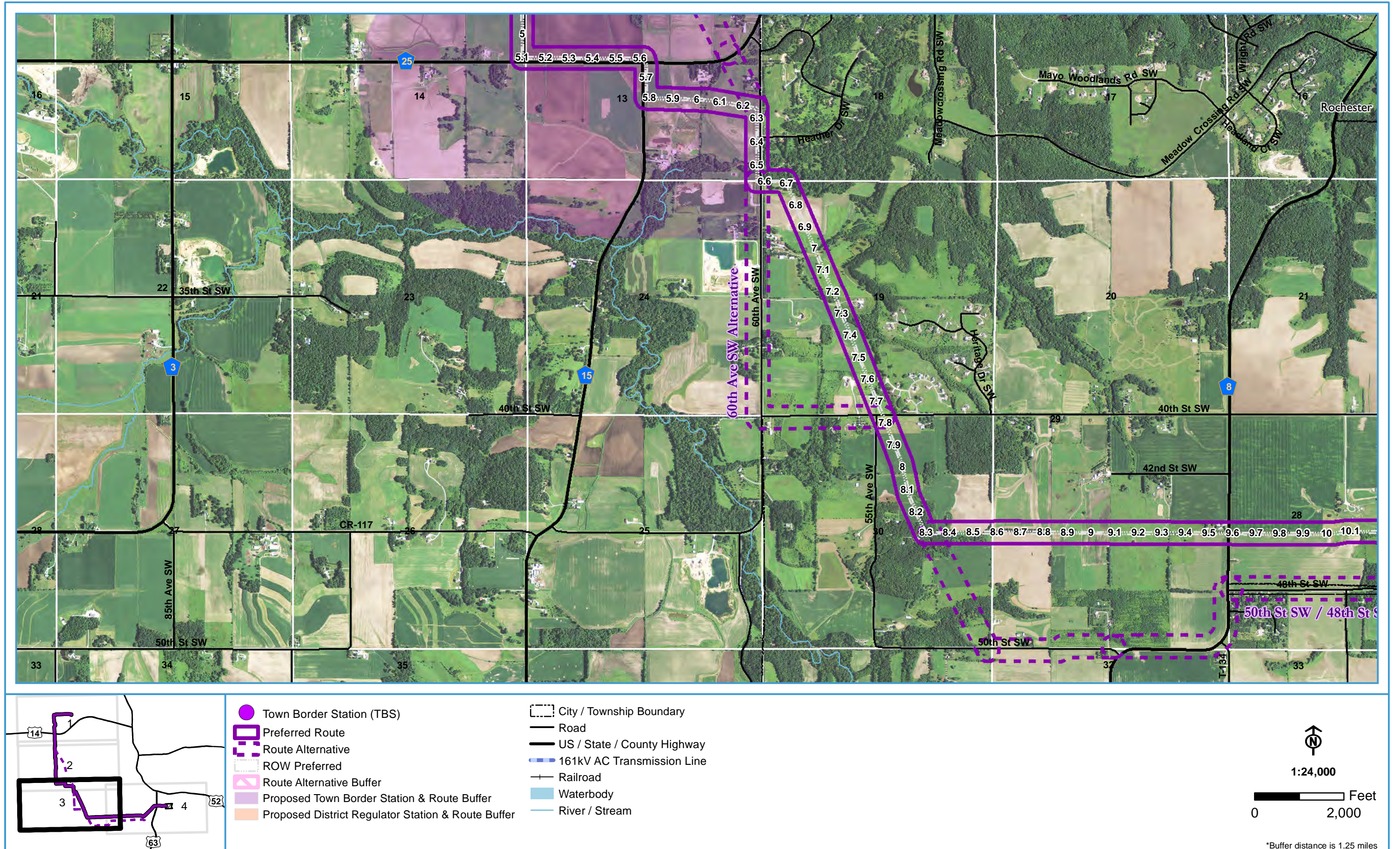
- 161kV AC Transmission Line
- Railroad
- Gas Pipeline
- Liquid Pipeline
- Road
- US / State / County Highway
- Waterbody
- River / Stream

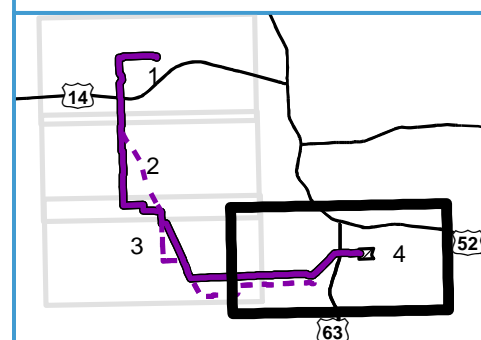
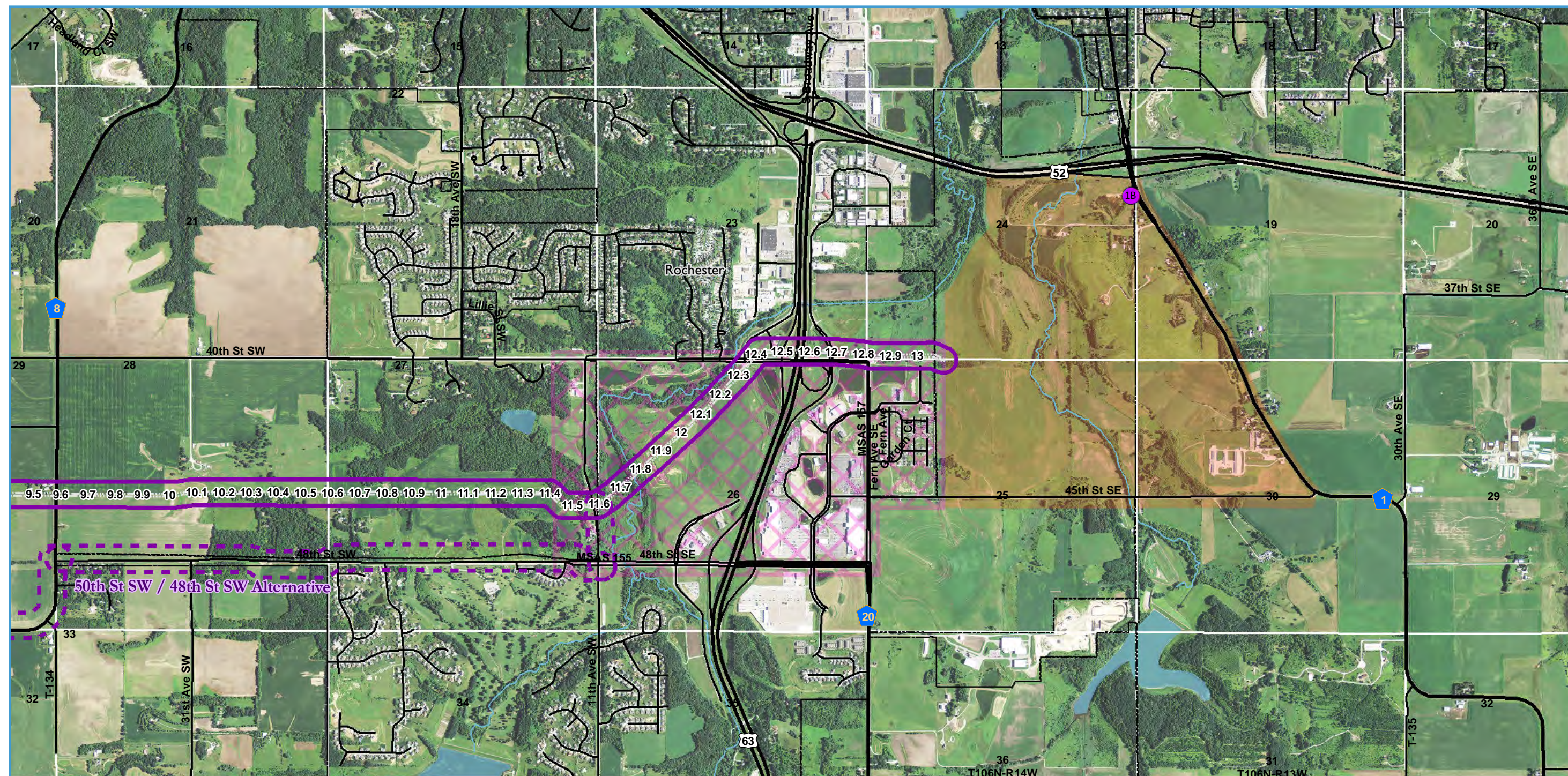






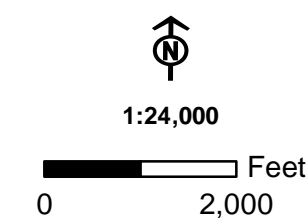






- Town Border Station (TBS)
- ▬ Preferred Route
- ▬ Route Alternative
- ▬ ROW Preferred
- ▬ Route Alternative Buffer
- ▬ Proposed Town Border Station & Route Buffer
- ▬ Proposed District Regulator Station & Route Buffer

- City / Township Boundary
- Road
- US / State / County Highway
- 161kV AC Transmission Line
- Railroad
- Waterbody
- River / Stream



*Buffer distance is 1.25 miles