

ATTACHMENT A

Natural Resource and Water Supply Summary Tables and Figures

Line 3 Replacement Project Route Segment Alternative (RSA)-49

DRAFT

<b>Table 1</b> <b>Line 3 Replacement Project – RSA-49-L3</b> <b>Summary of Public Waters Inventory Streams Crossed by the Proposed Route Segment Alternative Centerline</b> <b>and within the 2,000-ft-wide Route Alternative Corridor in Minnesota</b>		
<b>Watershed County</b>	<b>Number Crossed by the Proposed Route Segment Alternative Centerline<sup>a</sup></b>	<b>Miles Within the 2,000-ft-wide Route Segment Alternative Corridor<sup>b</sup></b>
<b>Beartrap-Nemadji</b>	<b>3</b>	<b>2.0</b>
Carlton	3	2.0
<b>St. Louis</b>	<b>2</b>	<b>1.7</b>
Carlton	2	1.7
<b>Grand Total<sup>c</sup></b>	<b>5</b>	<b>3.7</b>
<i>Public Waters Inventory (PWI) Stream Data Source: <a href="https://gisdata.mn.gov/dataset/water-mn-public-waters">https://gisdata.mn.gov/dataset/water-mn-public-waters</a></i> <sup>a</sup> Number of Public Waters Inventory streams crossed by the proposed route segment alternative centerline. <sup>b</sup> Total miles of Public Waters Inventory stream segment(s) crossed by the 2000-ft-wide route segment alternative corridor. <sup>c</sup> Numbers may not total consistently due to rounding.		

**Table 2**  
**Line 3 Replacement Project - RSA-49-L3**  
**Summary of Waterbodies Crossed by the Proposed Route Segment Alternative Centerline**  
**and within the 2,000-ft-wide Route Segment Alternative Corridor in Minnesota**

Watershed County	Number Crossed by the Proposed Route Alternative Centerline <sup>a</sup>				Miles Within the 2,000-ft-wide Route Alternative Corridor <sup>b</sup>			
	Perennial	Intermittent	Canal/Ditch/ Artificial Path/ Connector	Total <sup>c</sup>	Perennial	Intermittent	Canal/Ditch/ Artificial Path/ Connector	Total <sup>c</sup>
<b>Beartrap-Nemadji</b>	<b>3</b>	<b>3</b>	-	<b>6</b>	<b>3.6</b>	<b>0.8</b>	-	<b>4.5</b>
Carlton	3	3	-	6	3.6	0.8	-	4.5
<b>St. Louis</b>	<b>2</b>	-	-	<b>2</b>	<b>1.4</b>	-	-	<b>1.4</b>
Carlton	2	-	-	2	1.4	-	-	1.4
<b>Grand Total <sup>c</sup></b>	<b>5</b>	<b>3</b>	-	<b>8</b>	<b>5.0</b>	<b>0.8</b>	-	<b>5.9</b>

USGS National Hydrography Dataset (NHD) Data Source: <ftp://nhdftp.usgs.gov/DataSets/Staged/States/FileGDB/HighResolution/>

a Number of NHD waterbodies crossed by the proposed route segment alternative centerline.

b Miles of NHD stream segment(s) crossed by the 2000-ft-wide route segment alternative corridor.

c Numbers may not total consistently due to rounding.

**Table 3**  
**Line 3 Replacement Project – RSA-49-L3**  
**Summary of USFWS National Wetlands Inventory Crossed by the Route Segment Alternative Proposed Centerline**  
**and within the 2,000-ft-wide Route Segment Alternative Corridor in Minnesota**

Watershed County	Miles Crossed by the Proposed Route Segment Alternative Centerline <sup>a</sup>				Acres Within the 2,000-ft-wide Route Segment Alternative Corridor <sup>b</sup>			
	PEM <sup>c</sup>	PFO/PSS <sup>c</sup>	Pond/Lake/ Riverine	Total <sup>d</sup>	PEM <sup>c</sup>	PFO/PSS <sup>c</sup>	Pond/Lake/ Riverine	Total <sup>d</sup>
<b>Beartrap-Nemadji</b>	<b>0.0</b>	<b>3.0</b>	<b>0.0</b>	<b>3.0</b>	<b>37.8</b>	<b>513.8</b>	<b>0.9</b>	<b>552.5</b>
Carlton	0.0	3.0	0.0	3.0	37.8	513.8	0.9	552.5
<b>St. Louis</b>	<b>0.1</b>	<b>0.5</b>	<b>0.0</b>	<b>0.7</b>	<b>20.9</b>	<b>175.2</b>	<b>1.4</b>	<b>197.5</b>
Carlton	0.1	0.5	0.0	0.7	20.9	175.2	1.4	197.5
<b>Grand Total</b>	<b>0.1</b>	<b>3.5</b>	<b>0.0</b>	<b>3.7</b>	<b>58.6</b>	<b>689.0</b>	<b>2.4</b>	<b>750.0</b>

USFWS National Wetlands Inventory (NWI) Data Source: <http://www.fws.gov/wetlands/data/Data-Download.html>

a Total miles of NWI crossed by the proposed route segment alternative centerline.

b Total acres of NWI within the 2000-ft-wide route segment alternative corridor.

c PEM = Palustrine Emergent; PSS = Palustrine Scrub Shrub; PFO = Palustrine Forested (Cowardin et al. 1979).

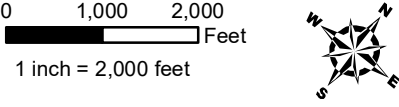
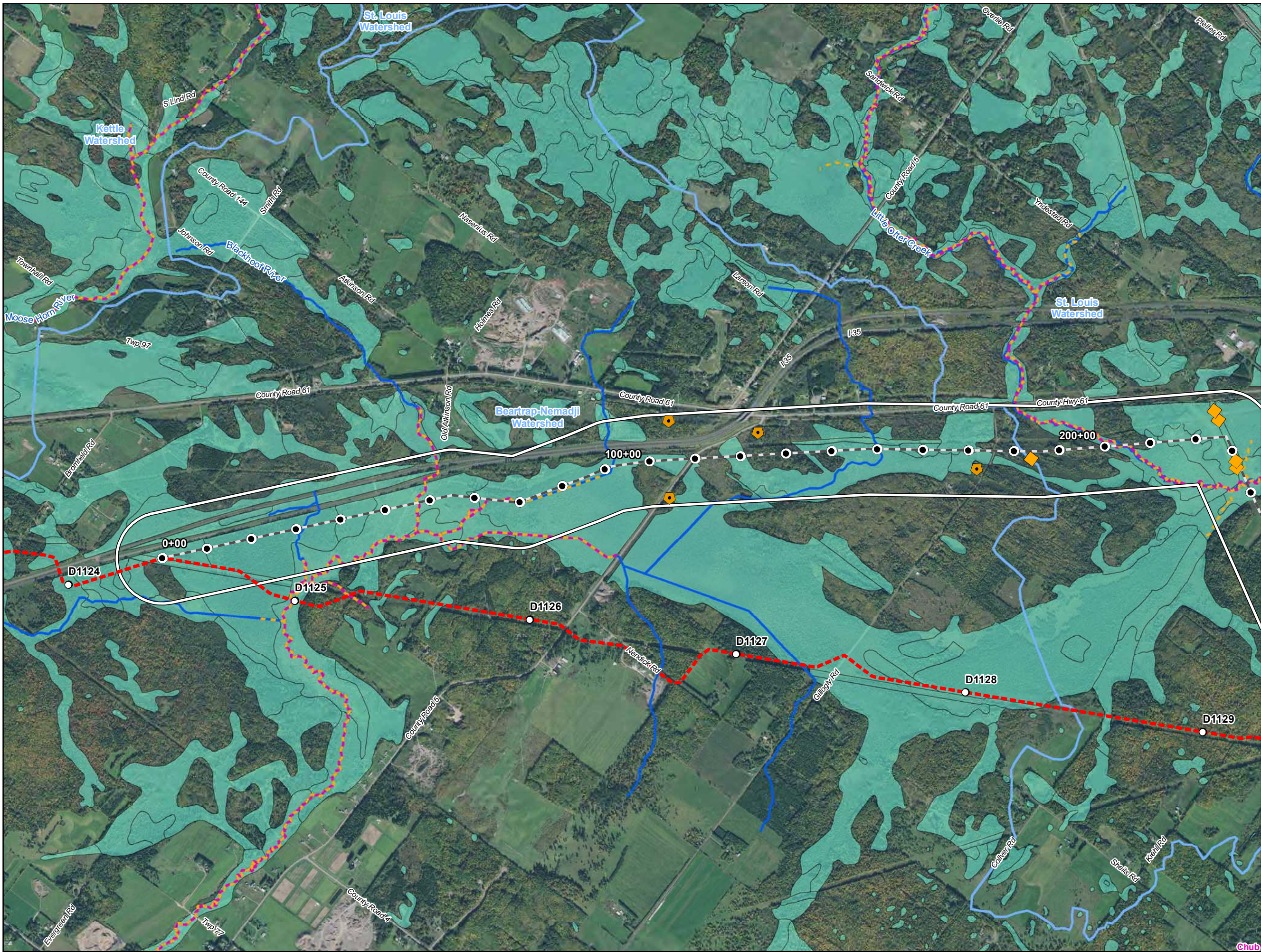
d Numbers may not total consistently due to rounding.

<b>Table 4</b> <b>Line 3 Replacement Project – RSA-49-L3</b> <b>Summary of Trout Streams Crossed by the Proposed Route Segment Alternative Centerline</b> <b>and within the 2,000-ft-wide Route Segment Alternative Corridor in Minnesota</b>		
<b>Watershed County</b>	<b>Number Crossed by the Proposed Route Segment Alternative Centerline<sup>a</sup></b>	<b>Miles Within the 2,000-ft-wide Route Segment Alternative Corridor<sup>b</sup></b>
<b>Beartrap-Nemadji</b>	<b>3</b>	<b>2.4</b>
Carlton	3	2.4
<b>St. Louis</b>	<b>2</b>	<b>2.0</b>
Carlton	2	2.0
<b>Grand Total<sup>c</sup></b>	<b>5</b>	<b>4.4</b>
<i>Trout Stream Data Source: <a href="https://gisdata.mn.gov/dataset/env-trout-stream-designations">https://gisdata.mn.gov/dataset/env-trout-stream-designations</a></i> <sup>a</sup> Number of trout streams crossed by the route segment alternative centerline. <sup>b</sup> Total miles of trout stream segment(s) crossed by the 2000-ft-wide route segment alternative corridor. <sup>c</sup> Numbers may not total consistently due to rounding.		

Table 5				
Line 3 Replacement Project – RSA-49-L3				
Wells within the 2,000-ft-wide Route Segment Alternative Corridor in Minnesota <sup>a</sup>				
Watershed Name	County	Well Type	Distance from Centerline (feet)	Total Number of Wells
Beartrap-Nemadji	Carlton	Domestic	521	4
			814	
			506	
			378	
County Well Index (CWI) Data Source: <a href="ftp://mgssun6.mnngs.umn.edu/pub2/cwi4/cwilocs_nps.zip">ftp://mgssun6.mnngs.umn.edu/pub2/cwi4/cwilocs_nps.zip</a>				
a Municipal wells are not included in the source data.				

Table 6				
Line 3 Replacement Project – RSA-49-L3				
Surface Water Intakes within the 2,000-ft-wide Route Segment Alternative Corridor in Minnesota <sup>a</sup>				
Watershed Name	County	Permit Type	Permit Status	Total
St. Louis	Carlton	General Permit Authorization	Active	3
			Inactive	1
		Individual Permit	Inactive	1
MPARS Minnesota DNR, Ecological and Water Resources, Sean Hunt, 651-259-5679				
a Municipal wells are not included in the source data.				





- Water Well
- Surface Water Intake
- Calcareous Fen
- Line 3 Milepost
- Alternative Stationing
- Proposed Line 3 Replacement Pipeline
- Alternative Centerline
- 2,000 ft Alternative Corridor
- Trout Stream
- PWI Stream
- NHD Stream
- PWI Basin
- NWI
- Watershed Boundary
- WHPA
- DWSMA
- County Boundary

**Figure 1**

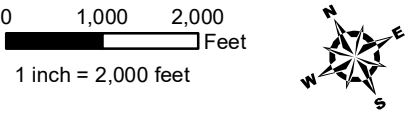
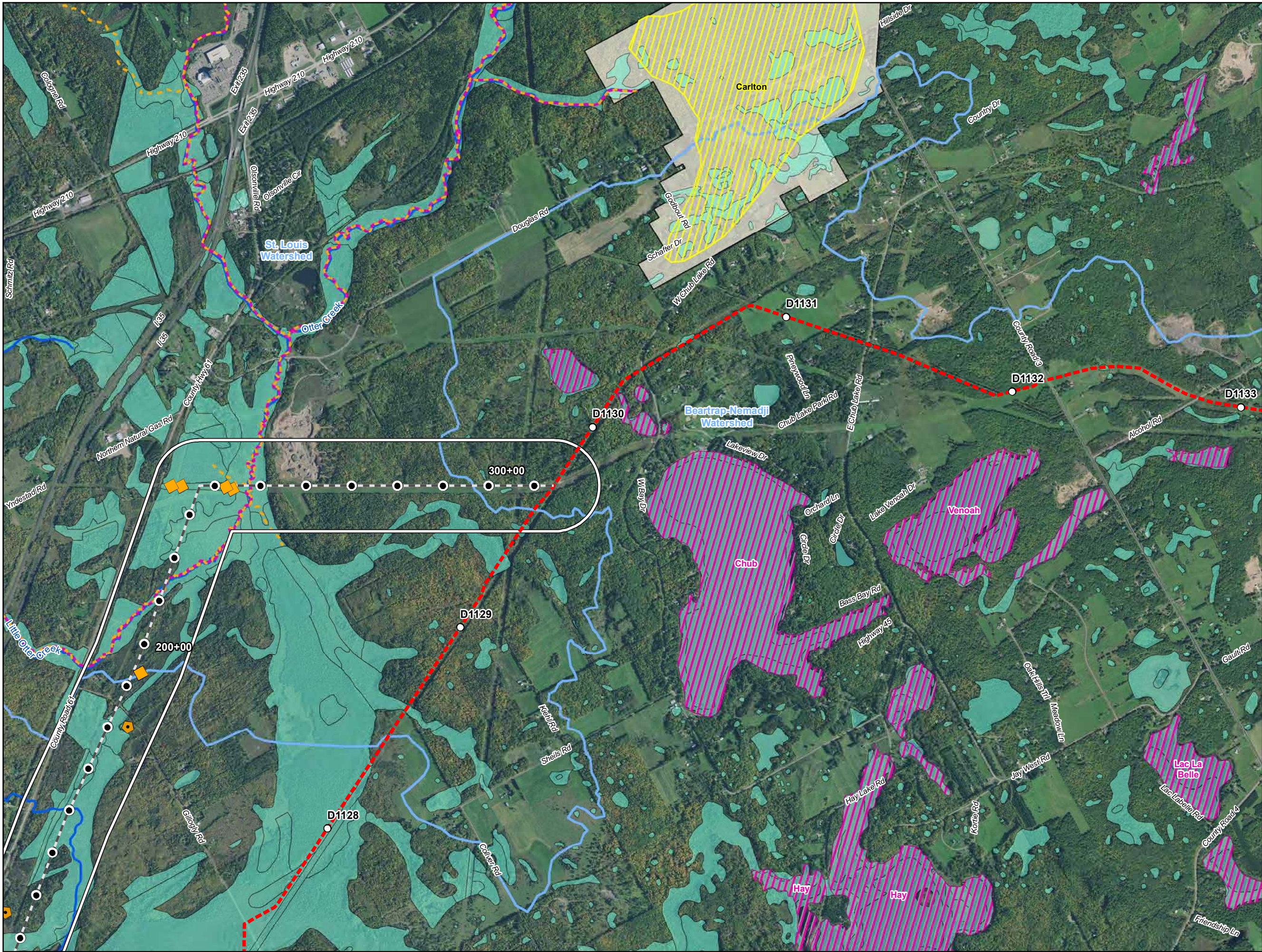
**Line 3 Replacement Project**

**RSA-49-L3**

**Enbridge**

**Carlton County, Minnesota**





- Water Well
- Surface Water Intake
- Calcareous Fen
- Line 3 Milepost
- Alternative Stationing
- Proposed Line 3 Replacement Pipeline
- Alternative Centerline
- 2,000 ft Alternative Corridor
- Trout Stream
- PWI Stream
- NHD Stream
- PWI Basin
- NWI
- Watershed Boundary
- WHPA
- DWSMA
- County Boundary

**Figure 2**  
**Line 3 Replacement Project**  
**RSA-49-L3**  
**Enbridge**  
**Carlton County, Minnesota**



ATTACHMENT A

Natural Resource and Water Supply Summary Tables and Figures

Line 3 Replacement Project Route Segment Alternative (RSA)-51

DRAFT

<b>Table 1</b> <b>Line 3 Replacement Project – RSA-51-L3</b> <b>Summary of Public Waters Inventory Streams Crossed by the Proposed Route Segment Alternative Centerline</b> <b>and within the 2,000-ft-wide Route Segment Alternative Corridor in Minnesota</b>		
<b>Watershed</b> County	<b>Number Crossed by the Proposed</b> <b>Route Segment Alternative Centerline</b> <sup>a</sup>	<b>Miles Within the 2,000-ft-wide</b> <b>Route Segment Alternative Corridor</b> <sup>b</sup>
<b>Beartrap-Nemadji</b>	<b>2</b>	<b>0.7</b>
Carlton	2	0.7
<b>Grand Total</b> <sup>c</sup>	<b>2</b>	<b>0.7</b>
<i>Public Waters Inventory (PWI) Stream Data Source: <a href="https://gisdata.mn.gov/dataset/water-mn-public-waters">https://gisdata.mn.gov/dataset/water-mn-public-waters</a></i> a     Number of Public Waters Inventory streams crossed by the proposed route segment alternative centerline. b     Total miles of Public Waters Inventory stream segment(s) crossed by the 2000-ft-wide route segment alternative corridor. c     Numbers may not total consistently due to rounding.		



**Table 2**  
**Sandpiper Pipeline Project - RSA-51-L3**  
**Summary of Waterbodies Crossed by the Proposed Route Segment Alternative Centerline**  
**and within the 2,000-ft-wide Route Segment Alternative Corridor in Minnesota**

Watershed County	Number Crossed by the Proposed Route Segment Alternative Centerline <sup>a</sup>				Miles Within the 2,000-ft-wide Route Segment Alternative Corridor <sup>b</sup>			
	Perennial	Intermittent	Canal/Ditch/ Artificial Path/ Connector	Total <sup>c</sup>	Perennial	Intermittent	Canal/Ditch/ Artificial Path/ Connector	Total <sup>c</sup>
<b>Beartrap-Nemadji</b>	<b>3</b>	-	-	<b>3</b>	<b>1.3</b>	<b>0.1</b>	<b>0.8</b>	<b>2.2</b>
Carlton	3	-	-	3	1.3	0.1	0.8	2.2
<b>Grand Total <sup>c</sup></b>	<b>3</b>	-	-	<b>3</b>	<b>1.3</b>	<b>0.1</b>	<b>0.8</b>	<b>2.2</b>

USGS National Hydrography Dataset (NHD) Data Source: <ftp://nhdftp.usgs.gov/DataSets/Staged/States/FileGDB/HighResolution/>

a Number of NHD waterbodies crossed by the proposed route segment alternative centerline.

b Miles of NHD stream segment(s) crossed by the 2000-ft-wide route segment alternative corridor.

c Numbers may not total consistently due to rounding.

**Table 3**  
**Line 3 Replacement Project – RSA-51-L3**  
**Summary of USFWS National Wetlands Inventory Crossed by the Route Segment Alternative Proposed Centerline**  
**and within the 2,000-ft-wide Route Segment Alternative Corridor in Minnesota**

Watershed County	Miles Crossed by the Proposed Route Alternative Centerline <sup>a</sup>				Acres Within the 2,000-ft-wide Route Alternative Corridor <sup>b</sup>			
	PEM <sup>c</sup>	PFO/PSS <sup>c</sup>	Pond/Lake/ Riverine	Total <sup>d</sup>	PEM <sup>c</sup>	PFO/PSS <sup>c</sup>	Pond/Lake/ Riverine	Total <sup>d</sup>
<b>Beartrap-Nemadji</b>	<b>0</b>	<b>0.7</b>	<b>0</b>	<b>0.7</b>	<b>0</b>	<b>166.1</b>	<b>0</b>	<b>166.1</b>
Carlton	0	0.7	0	0.7	0	166.1	0	166.1
<b>Grand Total</b>	<b>0</b>	<b>0.7</b>	<b>0</b>	<b>0.7</b>	<b>0</b>	<b>166.1</b>	<b>0</b>	<b>166.1</b>

USFWS National Wetlands Inventory (NWI) Data Source: <http://www.fws.gov/wetlands/data/Data-Download.html>

a Total miles of NWI crossed by the proposed route segment alternative centerline.

b Total acres of NWI within the 2000-ft-wide route segment alternative corridor.

c PEM = Palustrine Emergent; PSS = Palustrine Scrub Shrub; PFO = Palustrine Forested (Cowardin et al. 1979).

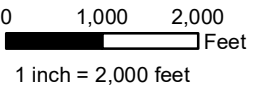
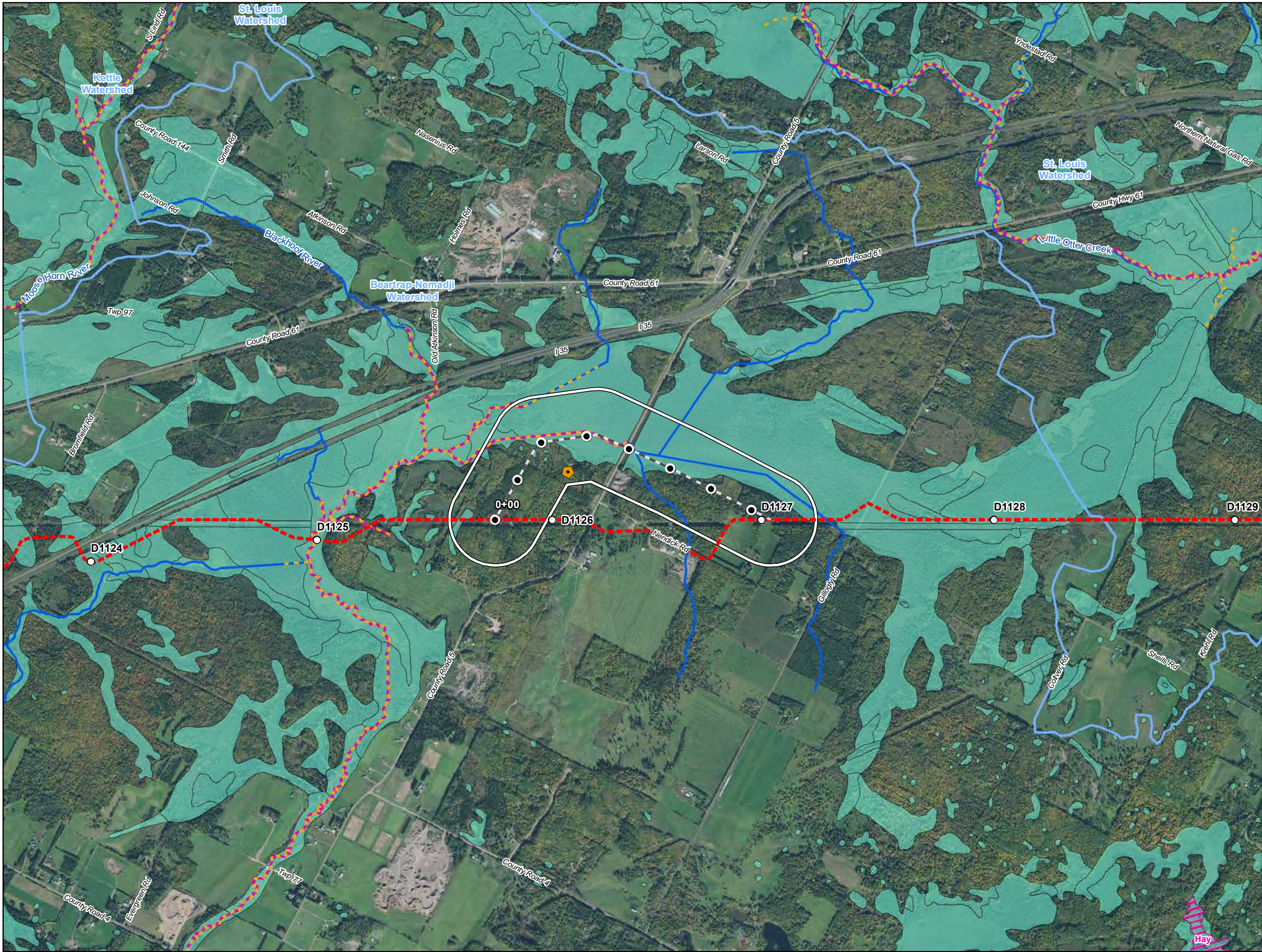
d Numbers may not total consistently due to rounding.

<b>Table 4</b> <b>Line 3 Replacement Project – RSA-51-L3</b> <b>Summary of Trout Streams Crossed by the Proposed Segment Route Alternative Centerline</b> <b>and within the 2,000-ft-wide Route Segment Alternative Corridor in Minnesota</b>		
Watershed County	Number Crossed by the Proposed Route Segment Alternative Centerline <sup>a</sup>	Miles Within the 2,000-ft-wide Route Segment Alternative Corridor <sup>b</sup>
<b>Beartrap-Nemadji</b>	<b>2</b>	<b>0.8</b>
Carlton	2	0.8
<b>Grand Total<sup>c</sup></b>	<b>2</b>	<b>0.8</b>
<i>Trout Stream Data Source: <a href="https://gisdata.mn.gov/dataset/env-trout-stream-designations">https://gisdata.mn.gov/dataset/env-trout-stream-designations</a></i> a Number of trout streams crossed by the route segment alternative centerline. b Total miles of trout stream segment(s) crossed by the 2000-ft-wide route segment alternative corridor. c Numbers may not total consistently due to rounding.		



<b>Table 5</b> <b>Line 3 Replacement Project – RSA-51-L3</b> <b>Wells within the 2,000-ft-wide Route Segment Alternative Corridor in Minnesota <sup>a</sup></b>				
<b>Watershed Name</b>	<b>County</b>	<b>Well Type</b>	<b>Distance from Centerline (feet)</b>	<b>Total Number of Wells</b>
Beartrap-Nemadji	Carlton	Domestic	703	1
County Well Index (CWI) Data Source: <a href="ftp://mgssun6.mngs.umn.edu/pub2/cwi4/cwilocs_nps.zip">ftp://mgssun6.mngs.umn.edu/pub2/cwi4/cwilocs_nps.zip</a> a      Municipal wells are not included in the source data.				





- Water Well
- Surface Water Intake
- Calcareous Fen
- Line 3 Milepost
- Alternative Stationing
- Proposed Line 3 Replacement Pipeline
- Alternative Centerline
- 2,000 ft Alternative Corridor
- Trout Stream
- PWI Stream
- NHD Stream
- PWI Basin
- NWI
- Watershed Boundary
- WHPA
- DWSMA
- County Boundary

**Figure 1**  
**Line 3 Replacement Project**  
**RSA-51-L3**  
**Enbridge**  
**Carlton County, Minnesota**



ATTACHMENT A

Natural Resource and Water Supply Summary Tables and Figures

Line 3 Replacement Project Route Segment Alternative (RSA)-52

DRAFT



<b>Table 1</b> <b>Line 3 Replacement Project – RSA-52-L3</b> <b>Summary of Public Waters Inventory Streams Crossed by the Proposed Route Segment Alternative Centerline</b> <b>and within the 2,000-ft-wide Route Segment Alternative Corridor in Minnesota</b>		
<b>Watershed County</b>	<b>Number Crossed by the Proposed Route Segment Alternative Centerline<sup>a</sup></b>	<b>Miles Within the 2,000-ft-wide Route Segment Alternative Corridor<sup>b</sup></b>
<b>Beartrap-Nemadji</b>	-	<b>0.1</b>
Carlton	-	0.1
<b>Grand Total<sup>c</sup></b>	-	<b>0.1</b>
<i>Public Waters Inventory (PWI) Stream Data Source: <a href="https://gisdata.mn.gov/dataset/water-mn-public-waters">https://gisdata.mn.gov/dataset/water-mn-public-waters</a></i> a     Number of Public Waters Inventory streams crossed by the proposed route segment alternative centerline. b     Total miles of Public Waters Inventory stream segment(s) crossed by the 2000-ft-wide route segment alternative corridor. c     Numbers may not total consistently due to rounding.		

**Table 2**  
**Line 3 Replacement Project - RSA-52-L3**  
**Summary of Waterbodies Crossed by the Proposed Route Segment Alternative Centerline**  
**and within the 2,000-ft-wide Route Segment Alternative Corridor in Minnesota**

Watershed County	Number Crossed by the Proposed Route Segment Alternative Centerline <sup>a</sup>				Miles Within the 2,000-ft-wide Route Segment Alternative Corridor <sup>b</sup>			
	Perennial	Intermittent	Canal/Ditch/ Artificial Path/ Connector	Total <sup>c</sup>	Perennial	Intermittent	Canal/Ditch/ Artificial Path/ Connector	Total <sup>c</sup>
<b>Beartrap-Nemadji</b>	<b>1</b>	-	-	<b>1</b>	<b>0.7</b>	-	<b>0.8</b>	<b>1.5</b>
Carlton	1	-	-	1	0.7	-	0.8	1.5
<b>Grand Total <sup>c</sup></b>	<b>1</b>	-	-	<b>1</b>	<b>0.7</b>	-	<b>0.8</b>	<b>1.5</b>

USGS National Hydrography Dataset (NHD) Data Source: <ftp://nhdftp.usgs.gov/DataSets/Staged/States/FileGDB/HighResolution/>

a Number of NHD waterbodies crossed by the proposed route segment alternative centerline.

b Miles of NHD stream segment(s) crossed by the 2000-ft-wide route segment alternative corridor.

c Numbers may not total consistently due to rounding.

**Table 3**  
**Line 3 Replacement Project – RSA-52-L3**  
**Summary of USFWS National Wetlands Inventory Crossed by the Route Segment Alternative Proposed Centerline**  
**and within the 2,000-ft-wide Route Segment Alternative Corridor in Minnesota**

Watershed County	Miles Crossed by the Proposed Route Segment Alternative Centerline <sup>a</sup>				Acres Within the 2,000-ft-wide Route Segment Alternative Corridor <sup>b</sup>			
	PEM <sup>c</sup>	PFO/PSS <sup>c</sup>	Pond/Lake/ Riverine	Total <sup>d</sup>	PEM <sup>c</sup>	PFO/PSS <sup>c</sup>	Pond/Lake/ Riverine	Total <sup>d</sup>
<b>Beartrap-Nemadji</b>	<b>0</b>	<b>0.1</b>	<b>0</b>	<b>0.1</b>	<b>0</b>	<b>83.1</b>	<b>0</b>	<b>83.1</b>
Carlton	0	0.1	0	0.1	0	83.1	0	83.1
<b>Grand Total</b>	<b>0</b>	<b>0.1</b>	<b>0</b>	<b>0.1</b>	<b>0</b>	<b>83.1</b>	<b>0</b>	<b>83.1</b>

USFWS National Wetlands Inventory (NWI) Data Source: <http://www.fws.gov/wetlands/data/Data-Download.html>

a Total miles of NWI crossed by the proposed route segment alternative centerline.

b Total acres of NWI within the 2000-ft-wide route segment alternative corridor.

c PEM = Palustrine Emergent; PSS = Palustrine Scrub Shrub; PFO = Palustrine Forested (Cowardin et al. 1979).

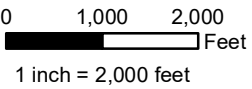
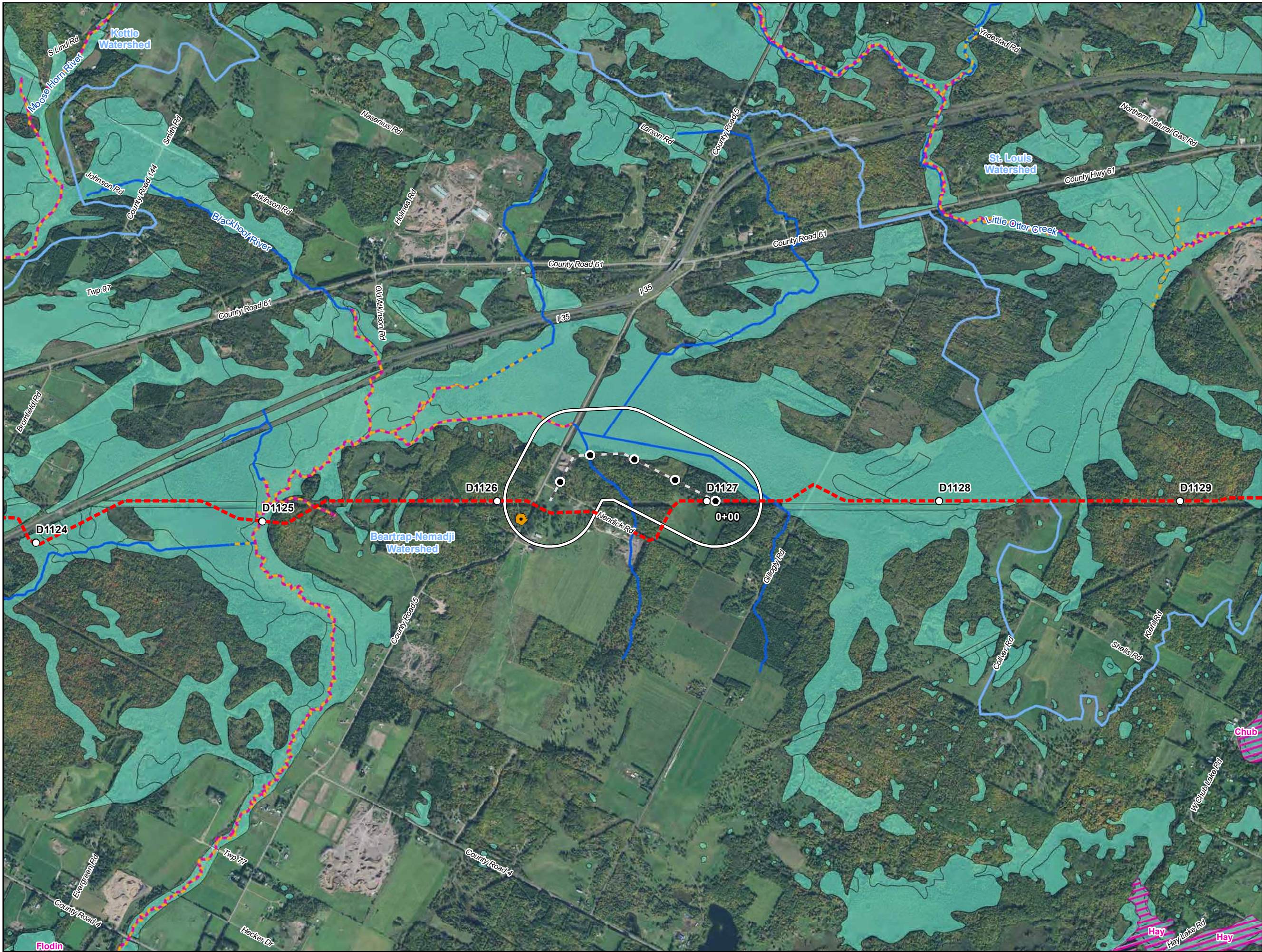
d Numbers may not total consistently due to rounding.

<b>Table 4</b> <b>Line 3 Replacement Project – RSA-52-L3</b> <b>Summary of Trout Streams Crossed by the Proposed Route Segment Alternative Centerline</b> <b>and within the 2,000-ft-wide Route Segment Alternative Corridor in Minnesota</b>		
Watershed County	Number Crossed by the Proposed Route Segment Alternative Centerline <sup>a</sup>	Miles Within the 2,000-ft-wide Route Segment Alternative Corridor <sup>b</sup>
<b>Beartrap-Nemadji</b>	<b>0</b>	<b>0.1</b>
Carlton	0	0.1
<b>Grand Total<sup>c</sup></b>	<b>0</b>	<b>0.1</b>
<i>Trout Stream Data Source: <a href="https://gisdata.mn.gov/dataset/env-trout-stream-designations">https://gisdata.mn.gov/dataset/env-trout-stream-designations</a></i> a Number of trout streams crossed by the route segment alternative centerline. b Total miles of trout stream segment(s) crossed by the 2000-ft-wide route segment alternative corridor. c Numbers may not total consistently due to rounding.		



<b>Table 5</b> <b>Line 3 Replacement Project – RSA-52-L3</b> <b>Wells within the 2,000-ft-wide Route Segment Alternative Corridor in Minnesota <sup>a</sup></b>				
<b>Watershed Name</b>	<b>County</b>	<b>Well Type</b>	<b>Distance from Centerline (feet)</b>	<b>Total Number of Wells</b>
Beartrap-Nemadji	Carlton	Unknown	733	1
County Well Index (CWI) Data Source: <a href="ftp://mgssun6.mngs.umn.edu/pub2/cwi4/cwilocs_nps.zip">ftp://mgssun6.mngs.umn.edu/pub2/cwi4/cwilocs_nps.zip</a> a     Municipal wells are not included in the source data.				





- Water Well
- Surface Water Intake
- Calcareous Fen
- Line 3 Milepost
- Alternative Stationing
- Proposed Line 3 Replacement Pipeline
- Alternative Centerline
- 2,000 ft Alternative Corridor
- Trout Stream
- PWI Stream
- NHD Stream
- PWI Basin
- NWI
- Watershed Boundary
- WHPA
- DWSMA
- County Boundary

**Figure 1**  
**Line 3 Replacement Project**  
**RSA-52-L3**  
**Enbridge**  
**Carlton County, Minnesota**



## ATTACHMENT A

### Natural Resource and Water Supply Summary Tables and Figures

Line 3 Replacement Project Route Segment Alternative (RSA)-White Elk Lake

DRAFT

<b>Table 1</b> <b>Line 3 Replacement Project – RSA-White Elk Lake-L3</b> <b>Summary of Public Waters Inventory Streams Crossed by the Proposed Route Segment Alternative Centerline</b> <b>and within the 2,000-ft-wide Route Segment Alternative Corridor in Minnesota</b>		
<b>Watershed County</b>	<b>Number Crossed by the Proposed Route Segment Alternative Centerline<sup>a</sup></b>	<b>Miles Within the 2,000-ft-wide Route Segment Alternative Corridor<sup>b</sup></b>
<b>Prairie-Willow</b>	<b>1</b>	<b>0.5</b>
Aitkin	1	0.5
<b>Grand Total<sup>c</sup></b>	<b>1</b>	<b>0.5</b>
<i>Public Waters Inventory (PWI) Stream Data Source: <a href="https://gisdata.mn.gov/dataset/water-mn-public-waters">https://gisdata.mn.gov/dataset/water-mn-public-waters</a></i> a Number of Public Waters Inventory streams crossed by the proposed route segment alternative centerline. b Total miles of Public Waters Inventory stream segment(s) crossed by the 2000-ft-wide route segment alternative corridor. c Numbers may not total consistently due to rounding.		



**Table 2**  
**Line 3 Replacement Project - RSA-White Elk Lake-L3**  
**Summary of Waterbodies Crossed by the Proposed Route Segment Alternative Centerline**  
**and within the 2,000-ft-wide Route Segment Alternative Corridor in Minnesota**

Watershed County	Number Crossed by the Proposed Route Segment Alternative Centerline <sup>a</sup>				Miles Within the 2,000-ft-wide Route Segment Alternative Corridor <sup>b</sup>			
	Perennial	Intermittent	Canal/Ditch/ Artificial Path/ Connector	Total <sup>c</sup>	Perennial	Intermittent	Canal/Ditch/ Artificial Path/ Connector	Total <sup>c</sup>
<b>Prairie-Willow</b>	<b>1</b>	<b>1</b>	<b>-</b>	<b>2</b>	<b>0.8</b>	<b>0.4</b>	<b>0.1</b>	<b>1.3</b>
Aitkin	1	1	-	2	0.8	0.4	0.1	1.3
<b>Grand Total <sup>c</sup></b>	<b>1</b>	<b>1</b>	<b>-</b>	<b>2</b>	<b>0.8</b>	<b>0.4</b>	<b>0.1</b>	<b>1.3</b>

USGS National Hydrography Dataset (NHD) Data Source: <ftp://nhdftp.usgs.gov/DataSets/Staged/States/FileGDB/HighResolution/>

a Number of NHD waterbodies crossed by the proposed route segment alternative centerline.

b Miles of NHD stream segment(s) crossed by the 2000-ft-wide route segment alternative corridor.

c Numbers may not total consistently due to rounding.

**Table 3**  
**Line 3 Replacement Project – RSA-White Elk Lake-L3**  
**Summary of USFWS National Wetlands Inventory Crossed by the Proposed Route Segment Alternative Centerline**  
**and within the 2,000-ft-wide Route Segment Alternative Corridor in Minnesota**

Watershed County	Miles Crossed by the Proposed Route Segment Alternative Centerline <sup>a</sup>				Acres Within the 2,000-ft-wide Route Segment Alternative Corridor <sup>b</sup>			
	PEM <sup>c</sup>	PFO/PSS <sup>c</sup>	Pond/Lake/ Riverine	Total <sup>d</sup>	PEM <sup>c</sup>	PFO/PSS <sup>c</sup>	Pond/Lake/ Riverine	Total <sup>d</sup>
<b>Prairie-Willow</b>	<b>1.3</b>	<b>1.0</b>	-	<b>2.3</b>	<b>274.4</b>	<b>352.2</b>	<b>0.9</b>	<b>627.5</b>
Aitkin	1.3	1.0	-	2.3	274.4	352.2	0.9	627.5
<b>Elk-Nokasippi</b>	-	<b>0.2</b>	-	<b>0.2</b>	<b>4.5</b>	<b>73.8</b>	-	<b>78.2</b>
Aitkin	-	0.2	-	0.2	4.5	73.8	-	78.2
<b>Grand Total <sup>d</sup></b>	<b>1.3</b>	<b>1.2</b>	-	<b>2.5</b>	<b>278.8</b>	<b>426.0</b>	<b>0.9</b>	<b>705.7</b>

USFWS National Wetlands Inventory (NWI) Data Source: <http://www.fws.gov/wetlands/data/Data-Download.html>

a Total miles of NWI crossed by the proposed route segment alternative centerline.

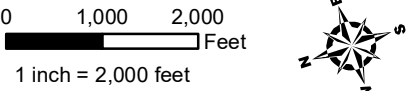
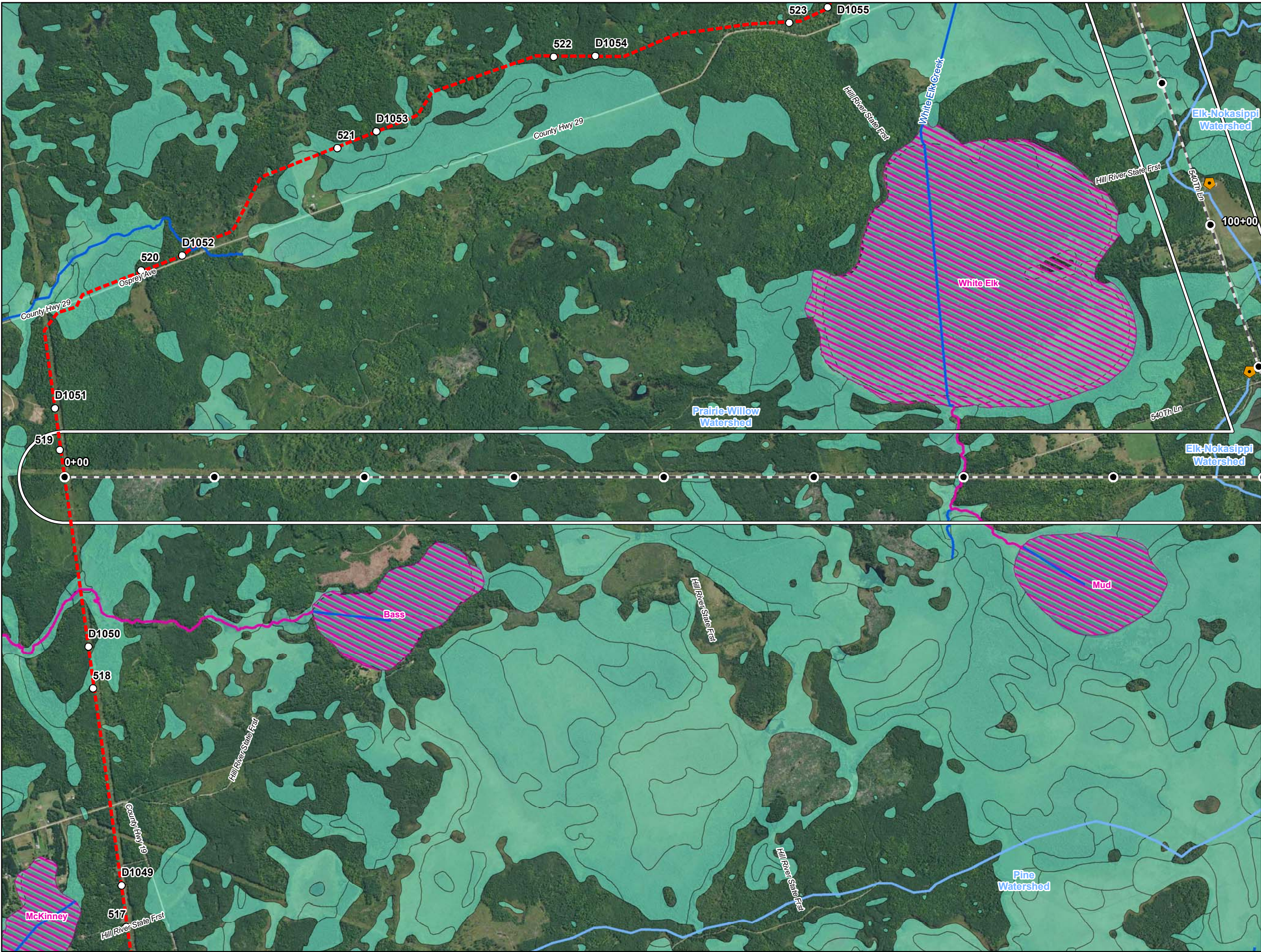
b Total acres of NWI within the 2000-ft-wide route segment alternative corridor.

c PEM = Palustrine Emergent; PSS = Palustrine Scrub Shrub; PFO = Palustrine Forested (Cowardin et al. 1979).

d Numbers may not total consistently due to rounding.

Table 4				
Line 3 Replacement Project – RSA-White Elk Lake-L3				
Wells within the 2,000-ft-wide Route Segment Alternative Corridor in Minnesota <sup>a</sup>				
Watershed Name	County	Well Type	Distance from Centerline (feet)	Total Number of Wells
Prairie-Willow	Aitkin	Domestic	242	1
Elk-Nokasippi	Aitkin	Domestic	258	1
Prairie-Willow	Aitkin	Domestic	683	3
			483	
			246	
County Well Index (CWI) Data Source: <a href="ftp://mgssun6.mngs.umn.edu/pub2/cwi4/cwilocs_nps.zip">ftp://mgssun6.mngs.umn.edu/pub2/cwi4/cwilocs_nps.zip</a>				
<sup>a</sup> Municipal wells are not included in the source data.				



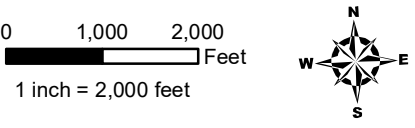
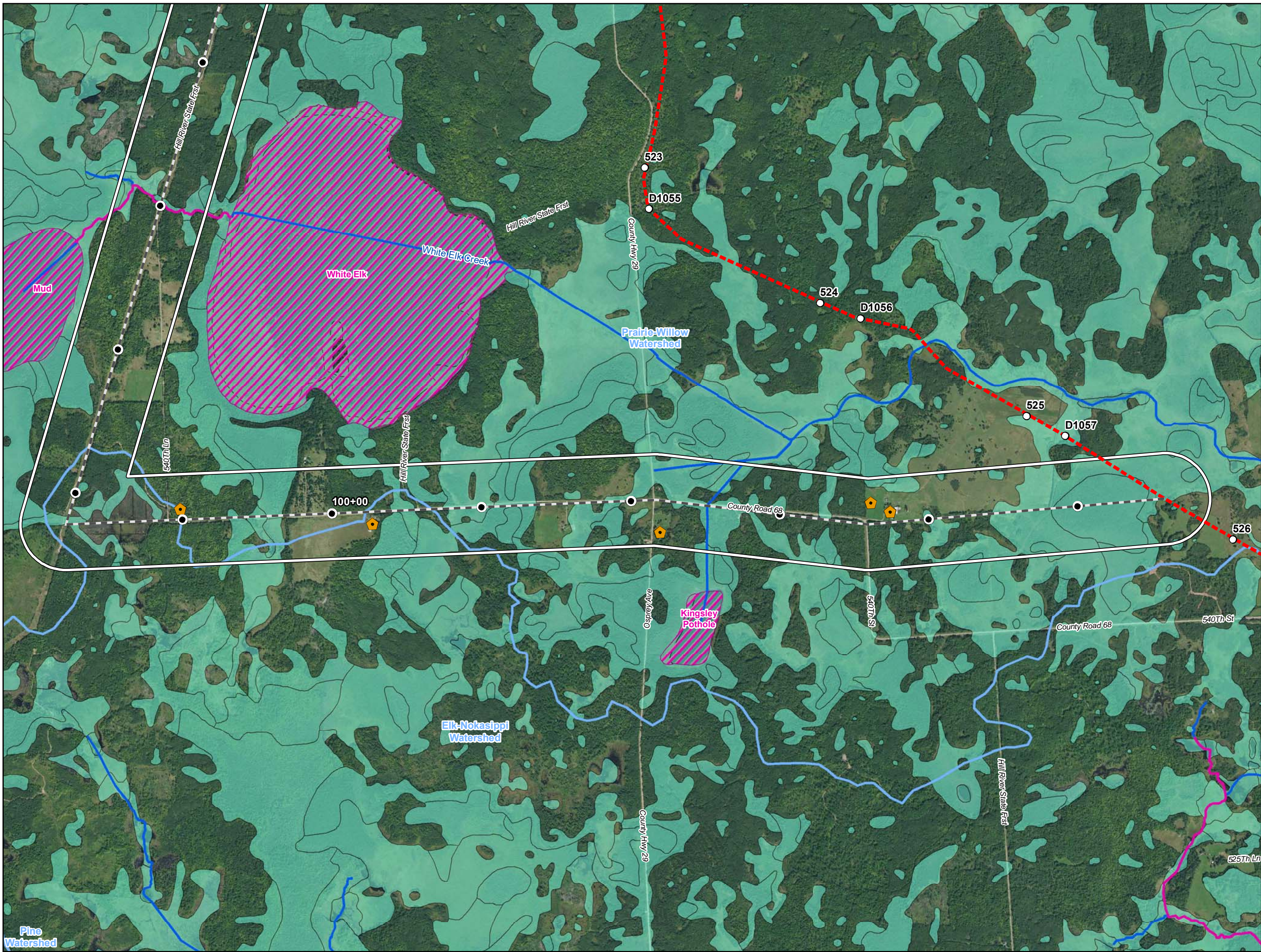


- Water Well
- Surface Water Intake
- Calcareous Fen
- Line 3 Milepost
- Alternative Stationing
- Proposed Line 3 Replacement Pipeline
- Alternative Centerline
- 2,000 ft Alternative Corridor
- Trout Stream
- PWI Stream
- NHD Stream
- PWI Basin
- NWI
- Watershed Boundary
- WHPA
- DWSMA
- County Boundary

**Figure 1**  
**Line 3 Replacement Project**  
**RSA-White Elk Lake-L3**  
**Enbridge**  
**Aitkin County, Minnesota**







- Water Well
- Surface Water Intake
- Calcareous Fen
- Line 3 Milepost
- Alternative Stationing
- Proposed Line 3 Replacement Pipeline
- Alternative Centerline
- 2,000 ft Alternative Corridor
- Trout Stream
- PWI Stream
- NHD Stream
- PWI Basin
- NWI
- Watershed Boundary
- WHPA
- DWSMA
- County Boundary

**Figure 2**  
**Line 3 Replacement Project**  
**RSA-White Elk Lake-L3**  
**Enbridge**  
**Aitkin County, Minnesota**

Date: (10/18/2016) Source: Z:\Clients\Aitkin\Aitkin\Line\_3\_Full\_Replacement\ArcGIS\2016\10\Photo\Map\RSA-WhiteElkLake-L3.mxd