

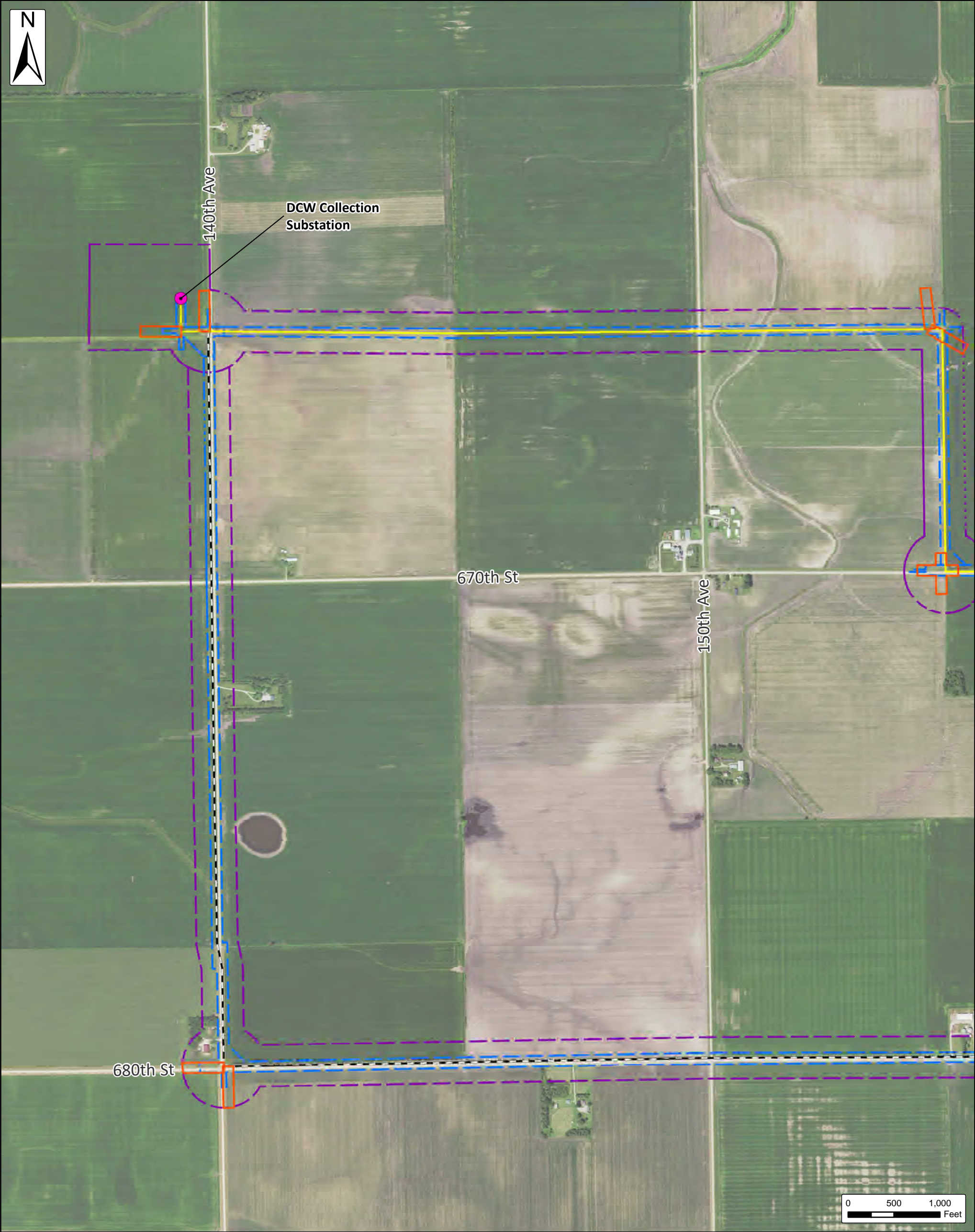
Dodge County Wind, LLC

Figure 1.2 - Detailed Aerial

Page 1 of 9

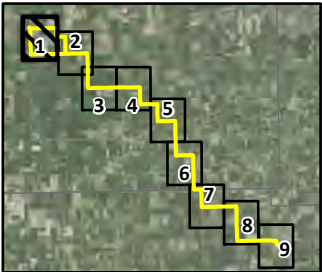
Dodge County and Mower County, Minnesota

Issue Date:
1/3/2022



- Substation
- Anticipated Alignment
- Alternate Segment White
- Proposed Pulling Easements
- Proposed Laydown Yard
- Project ROW
- Route
- Existing Transmission Line
- City/Village
- Townships
- Counties

SOURCE: USDA NAIP IMAGERY 2019



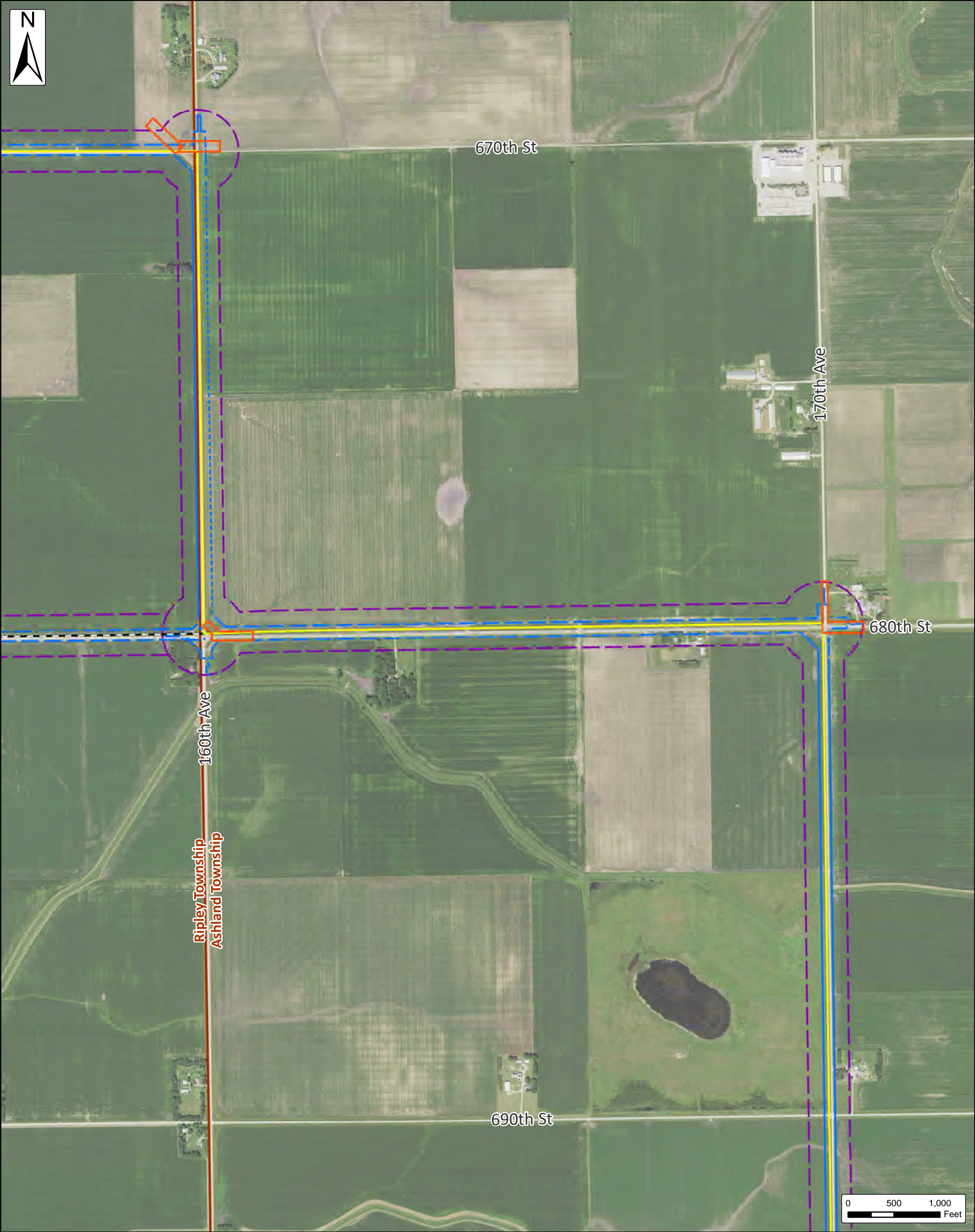
Dodge County Wind, LLC

Figure 1.2 - Detailed Aerial

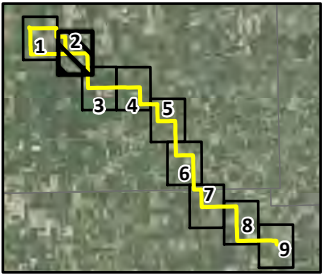
Page 2 of 9

Dodge County and Mower County, Minnesota

Issue Date:
1/3/2022



- | | | |
|----------------------------|----------------------------|--------------|
| Substation | Project ROW | City/Village |
| Anticipated Alignment | Route | Townships |
| Alternate Segment White | Existing Transmission Line | Counties |
| Proposed Pulling Easements | | |
| Proposed Laydown Yard | | |



SOURCE: USDA NAIP IMAGERY 2019

Dodge County Wind, LLC

Figure 1.2 - Detailed Aerial

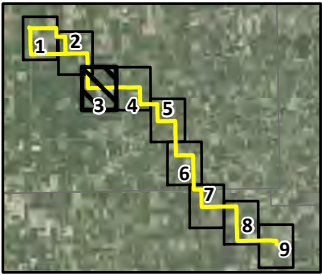
Page 3 of 9

Dodge County and Mower County, Minnesota

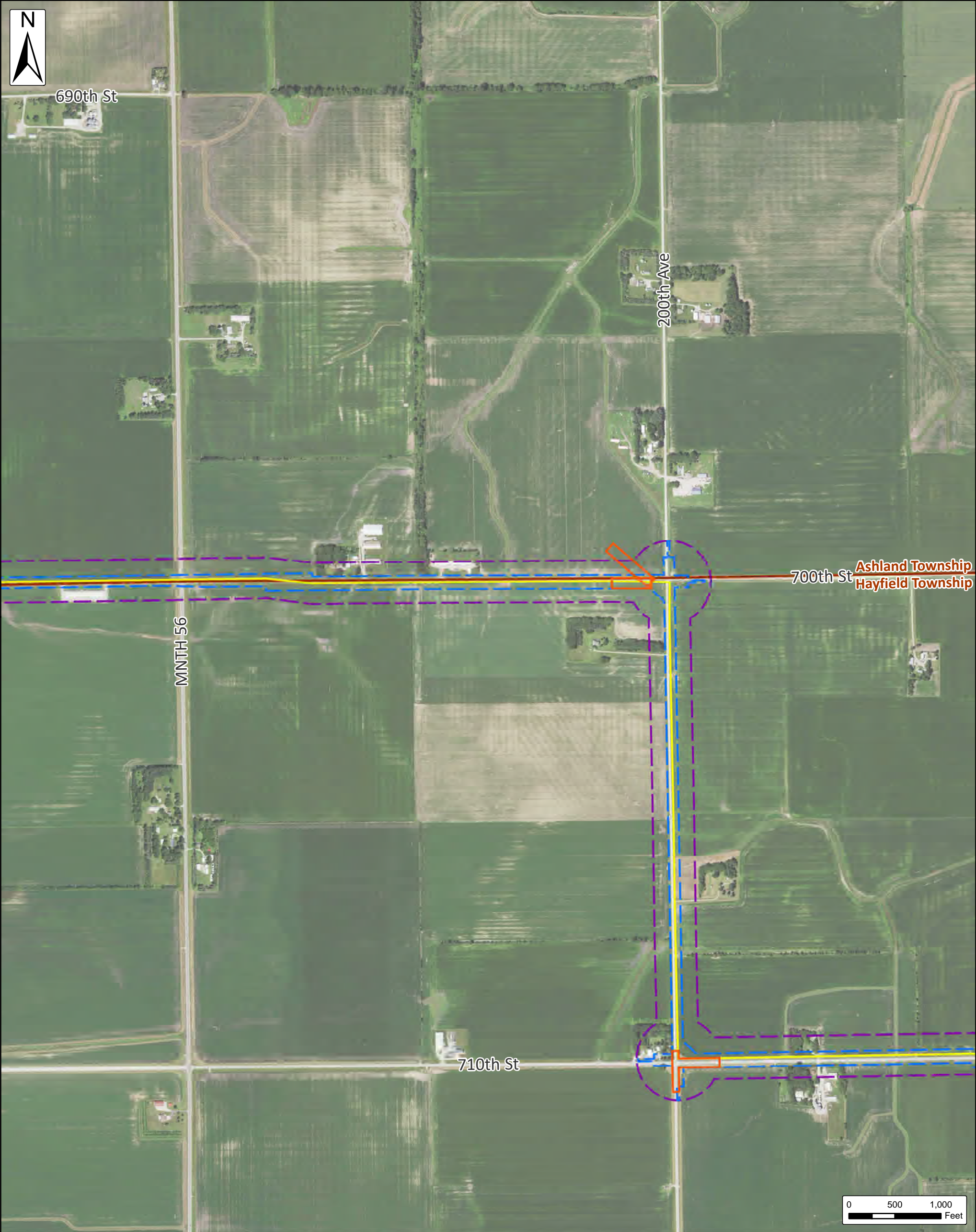
Issue Date:
1/3/2022



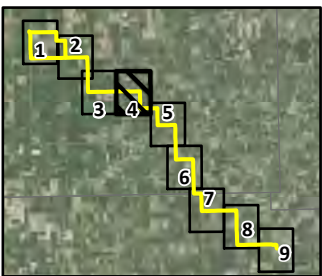
- | | | |
|----------------------------|----------------------------|--------------|
| Substation | Project ROW | City/Village |
| Anticipated Alignment | Route | Townships |
| Alternate Segment White | Existing Transmission Line | Counties |
| Proposed Pulling Easements | | |
| Proposed Laydown Yard | | |



SOURCE: USDA NAIP IMAGERY 2019



- Substation
- Anticipated Alignment
- Alternate Segment White
- Proposed Pulling Easements
- Proposed Laydown Yard
- Project ROW
- Route
- Existing Transmission Line
- City/Village
- Townships
- Counties



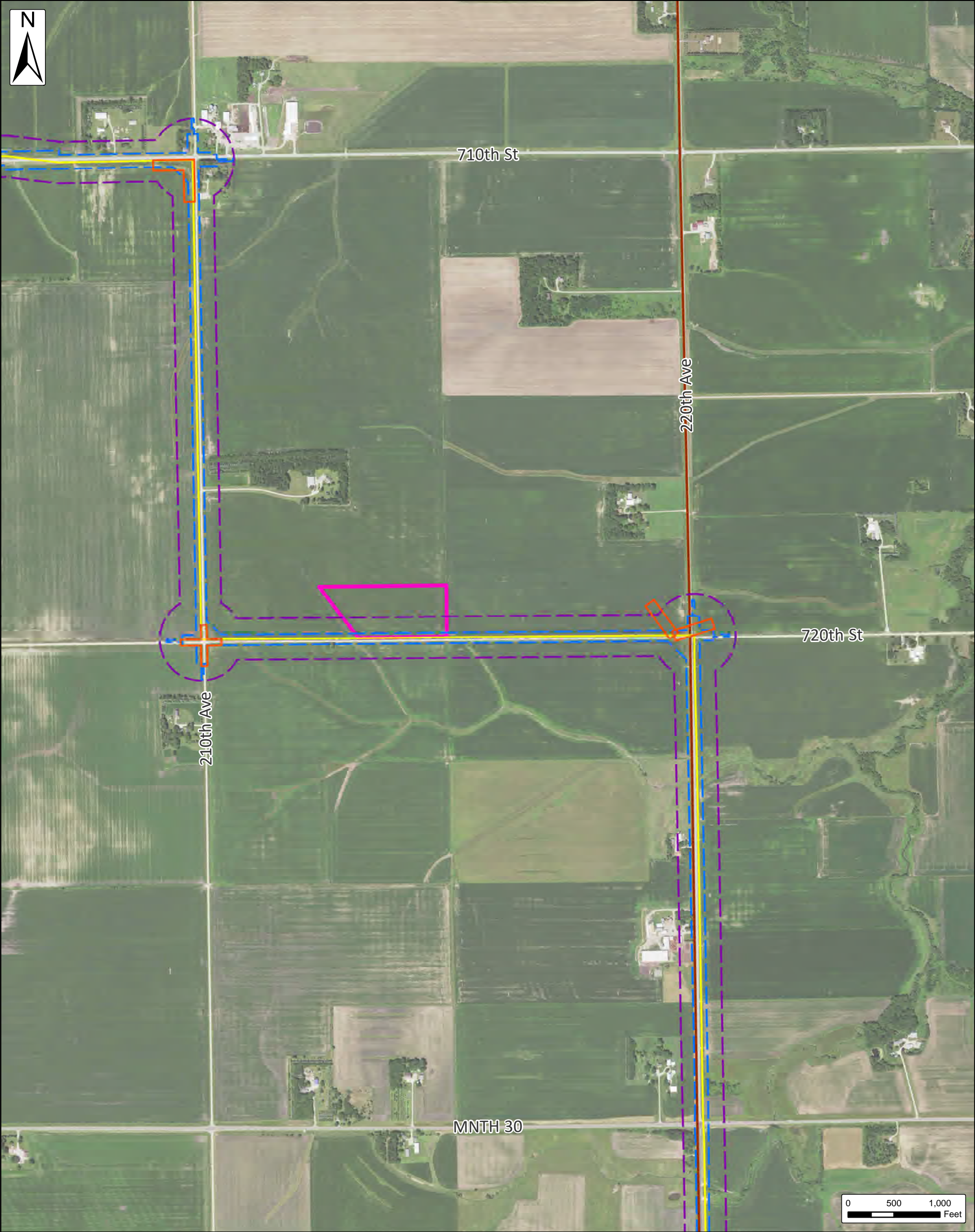
Dodge County Wind, LLC

Figure 1.2 - Detailed Aerial

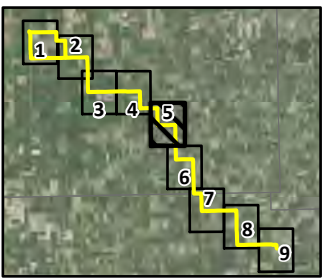
Page 5 of 9

Dodge County and Mower County, Minnesota

Issue Date:
1/3/2022



- | | | |
|----------------------------|----------------------------|--------------|
| Substation | Project ROW | City/Village |
| Anticipated Alignment | Route | Townships |
| Alternate Segment White | Existing Transmission Line | Counties |
| Proposed Pulling Easements | | |
| Proposed Laydown Yard | | |



SOURCE: USDA NAIP IMAGERY 2019

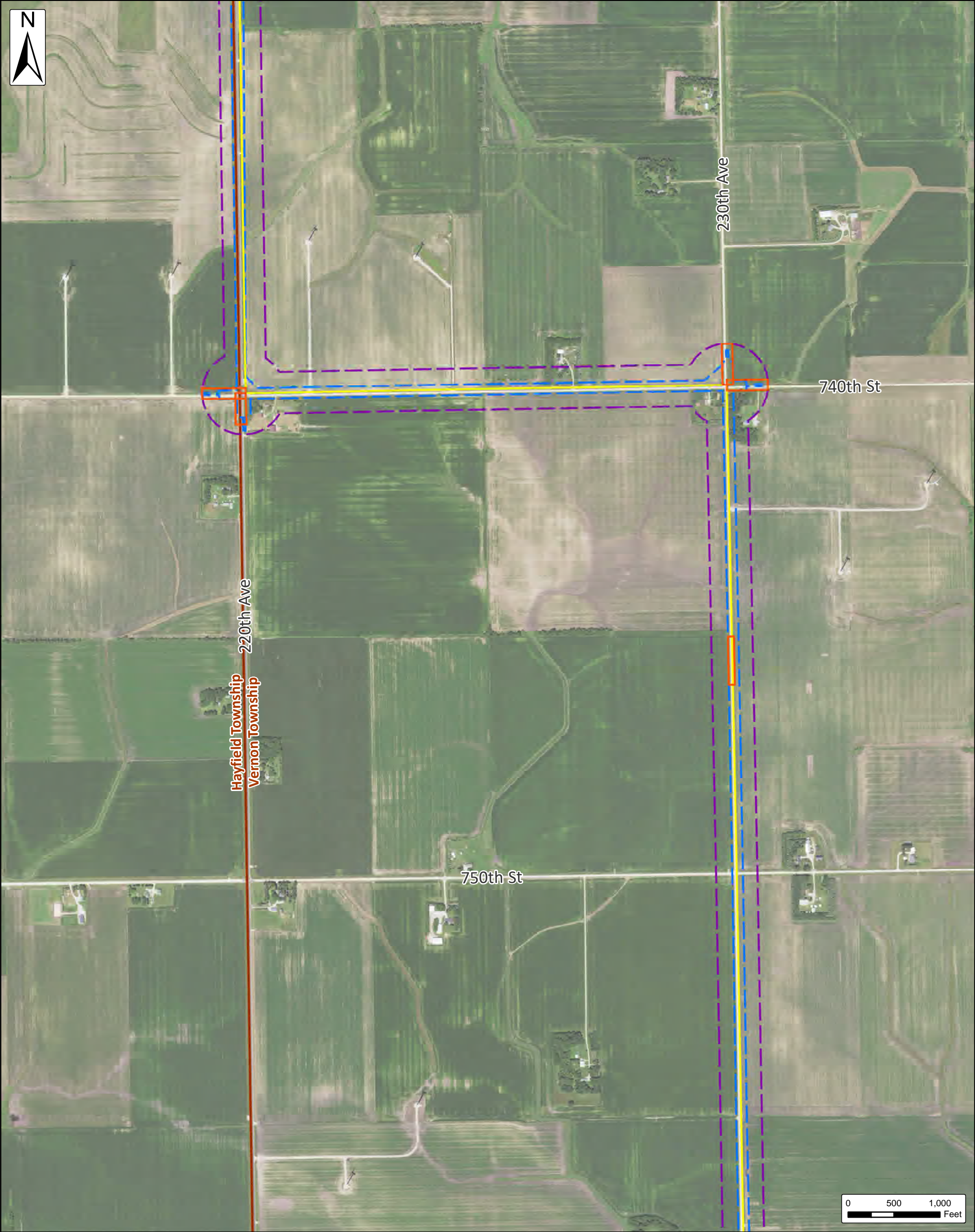
Dodge County Wind, LLC

Figure 1.2 - Detailed Aerial

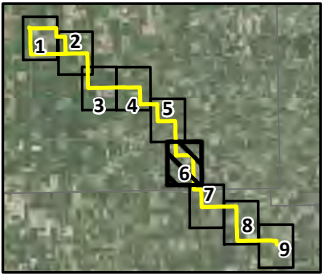
Page 6 of 9

Dodge County and Mower County, Minnesota

Issue Date:
1/3/2022



- | | | |
|----------------------------|----------------------------|--------------|
| Substation | Project ROW | City/Village |
| Anticipated Alignment | Route | Townships |
| Alternate Segment White | Existing Transmission Line | Counties |
| Proposed Pulling Easements | | |
| Proposed Laydown Yard | | |



SOURCE: USDA NAIP IMAGERY 2019

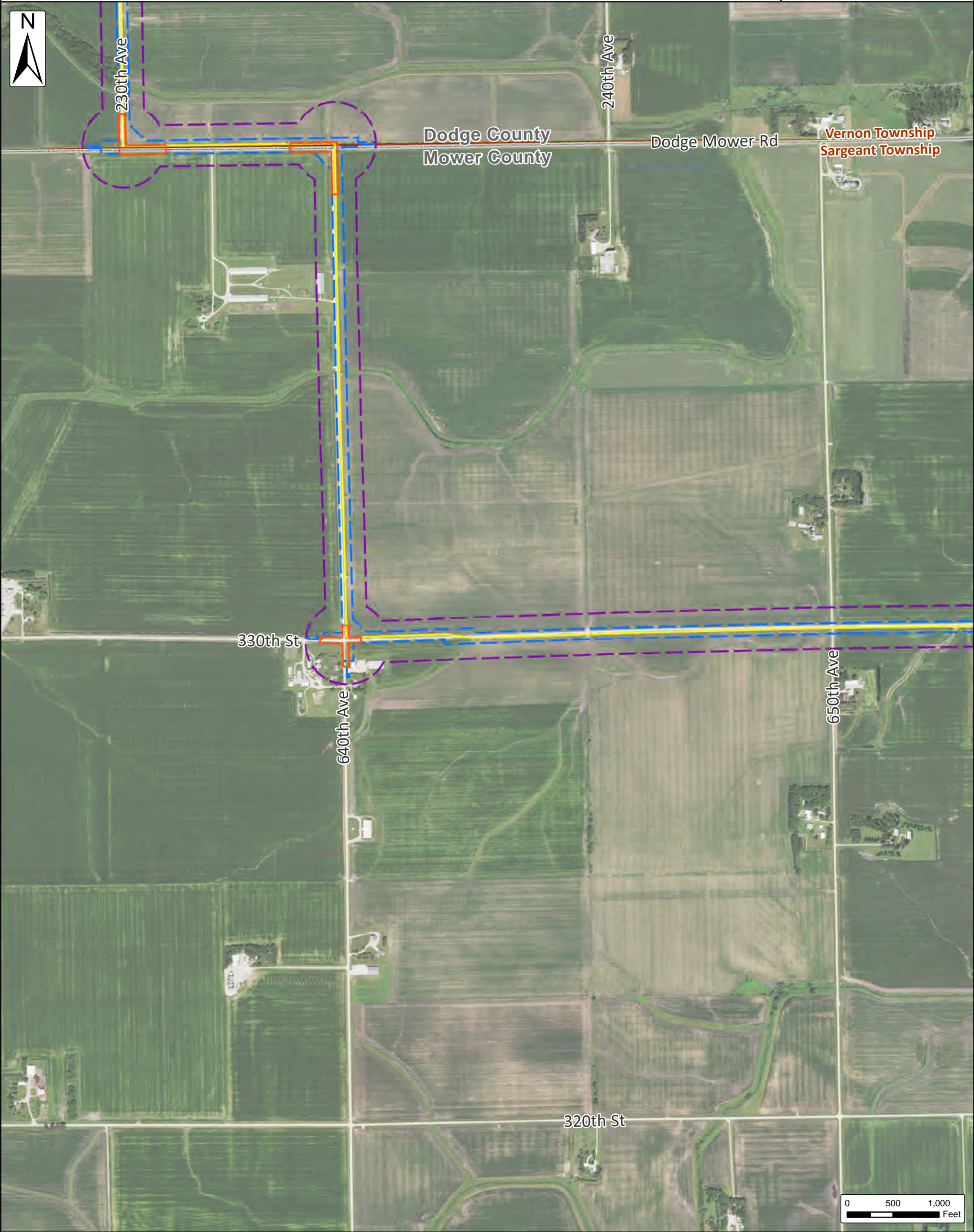
Dodge County Wind, LLC

Figure 1.2 - Detailed Aerial

Page 7 of 9

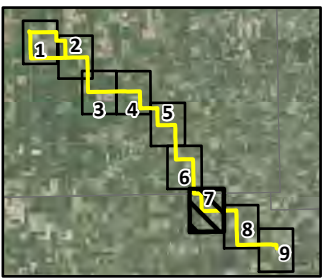
Dodge County and Mower County, Minnesota

Issue Date:
1/3/2022



- | | | |
|----------------------------|----------------------------|--------------|
| Substation | Project ROW | City/Village |
| Anticipated Alignment | Route | Townships |
| Alternate Segment White | Existing Transmission Line | Counties |
| Proposed Pulling Easements | | |
| Proposed Laydown Yard | | |

SOURCE: USDA NAIP IMAGERY 2019



Dodge County Wind, LLC

Figure 1.2 - Detailed Aerial

Page 8 of 9

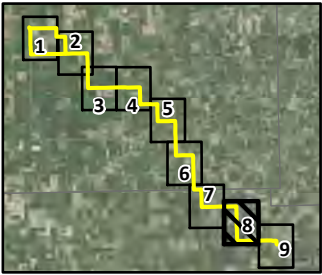
Dodge County and Mower County, Minnesota

Issue Date:
1/3/2022



- | | | |
|----------------------------|----------------------------|--------------|
| Substation | Project ROW | City/Village |
| Anticipated Alignment | Route | Townships |
| Alternate Segment White | Existing Transmission Line | Counties |
| Proposed Pulling Easements | | |
| Proposed Laydown Yard | | |

SOURCE: USDA NAIP IMAGERY 2019



Dodge County Wind, LLC

Figure 1.2 - Detailed Aerial

Page 9 of 9

Dodge County and Mower County, Minnesota

Issue Date:
1/3/2022

