

Data Source(s): Westwood (2021); ESRI WMS World Imagery Basemap (Accessed 2020); Census Bureau (2019); Geospatial Data Gateway (2019).

**Legend**

- Project Area
- Municipal Boundary
- County Boundary
- State Boundary
- ◆ Hayward Substation
- Major Road
- → → Flow Direction Line
- Major Watershed Boundary
- Minor Watershed Boundary

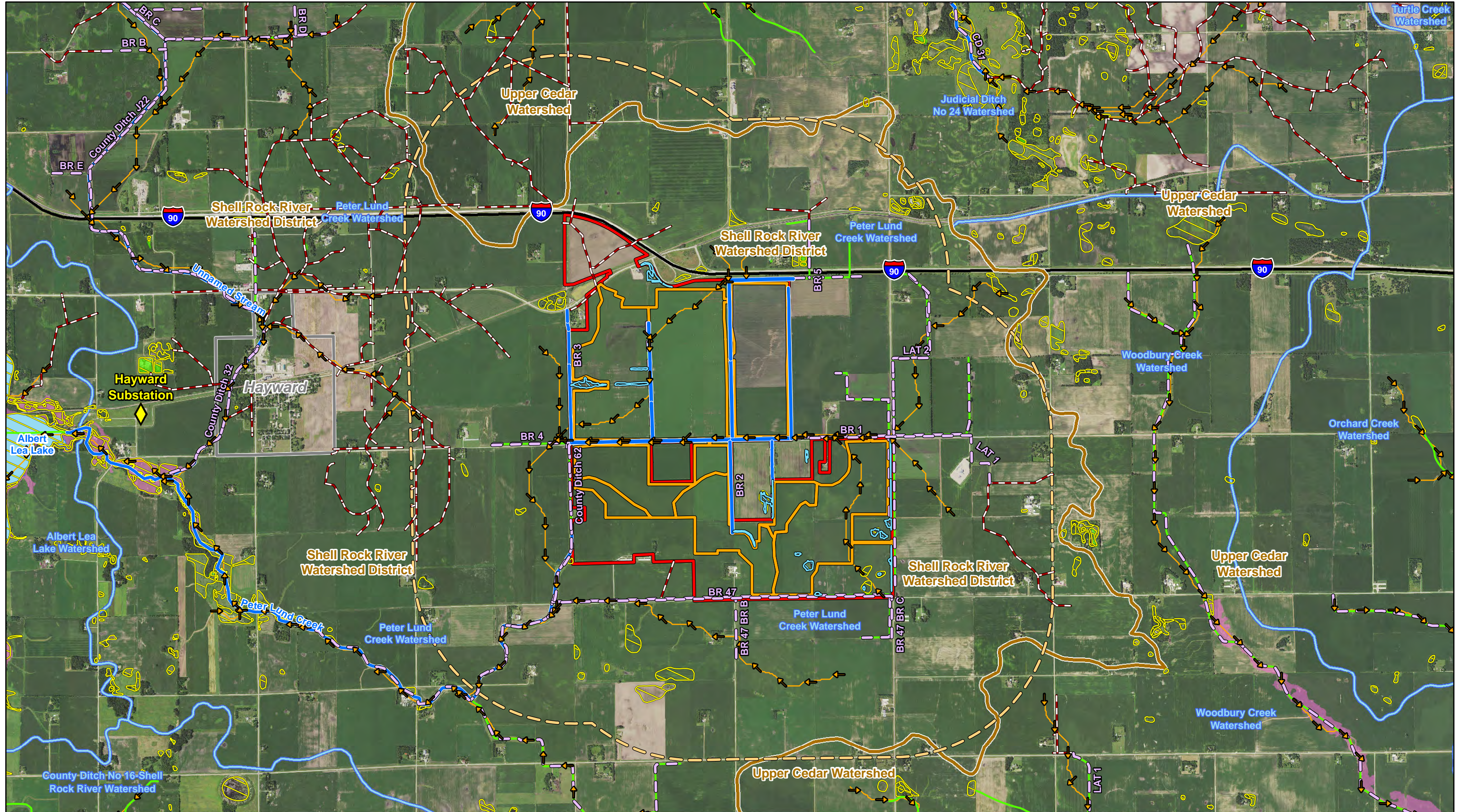


**Hayward Solar Project**

Freeborn County, Minnesota

**Regional Watershed Districts Within Project Area**

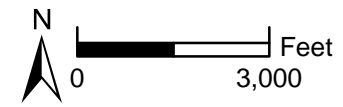




Data Source(s): Westwood (2021); ESRI WMS World Imagery Basemap (Accessed 2020); Census Bureau (2019); U.S. Department of Agriculture, Natural Resources Conservation Service (2020); TetraTech (2020).

**Legend**

- Project Area
- Hayward Substation
- 1-Mile Project Area Buffer
- Flow Direction Line
- Hydro Drainage Area
- Major Watershed Boundary
- Minor Watershed Boundary
- Drainage Ditch
- Public Drain Tile
- NWI Wetland
- FEMA Floodplain
- PWI Watercourse
- PWI Basin
- NHD Flowline
- NHD Waterbody
- Field Delineated Wetland
- Field Delineated Waterway
- Major Road
- Municipal Boundary



**Hayward Solar Project**  
Freeborn County, Minnesota

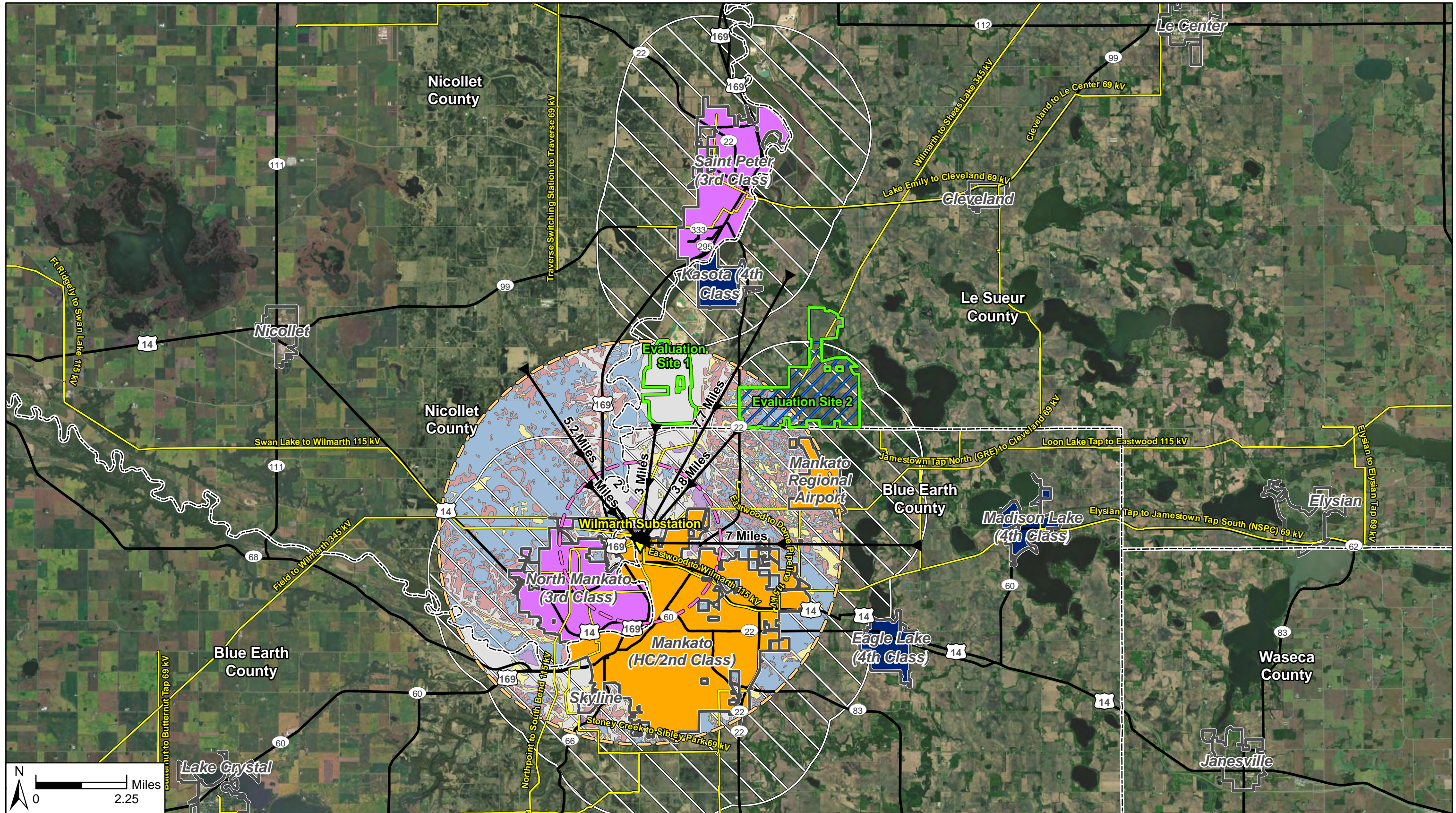
**Drainage Ways, Surface Waters, & Watersheds in Project Area**

Map Document: N:\00265999\00GIS\Prime Farmland Exhibit\Hayward\_PrimeFarmland\_Ex11a\_DrainageWaysSurfaceWaters&Watersheds\ProjectAreaMap\_210427.mxd 4/27/2021 4:28:25 PM radevito





Map Document: N:\0026599-00\GIS\Prime Farmland Exhibit\Hayward\_PrimeFarmland\_Ext12\_WilmarthEvaluationSite\_PrimeFarmland&CharterCitiesMap\_210429.mxd 4/29/2021 4:17:52 PM radevid



Data Source(s): Westwood (2021); ESRI WMS World Imagery Basemap (Accessed 2021); Census Bureau (2019); U.S. Department of Agriculture, Natural Resources Conservation Service (2020); Ventyx Velocity Suite, Ventyx Energy LLC. (2020).



**Legend**

- Wilmarth Evaluation Site Boundary  
Site 1: 1,253.13 Acres  
Site 2: 2,909.35 Acres
- 2-Mile Charter City Buffer
- Area of Charter City Buffer Intersection 2,563.41 Acres
- 2-Mile Search Buffer
- 5-Mile Search Buffer
- Municipal Boundary
- County Boundary
- Major Road

- ◆ Wilmarth Substation
- Existing Transmission Line
- Distance Span Line to Wilmarth Substation

- Charter City Types**
- Home Rule Charter/2nd Class City
  - 3rd Class City
  - 4th Class City

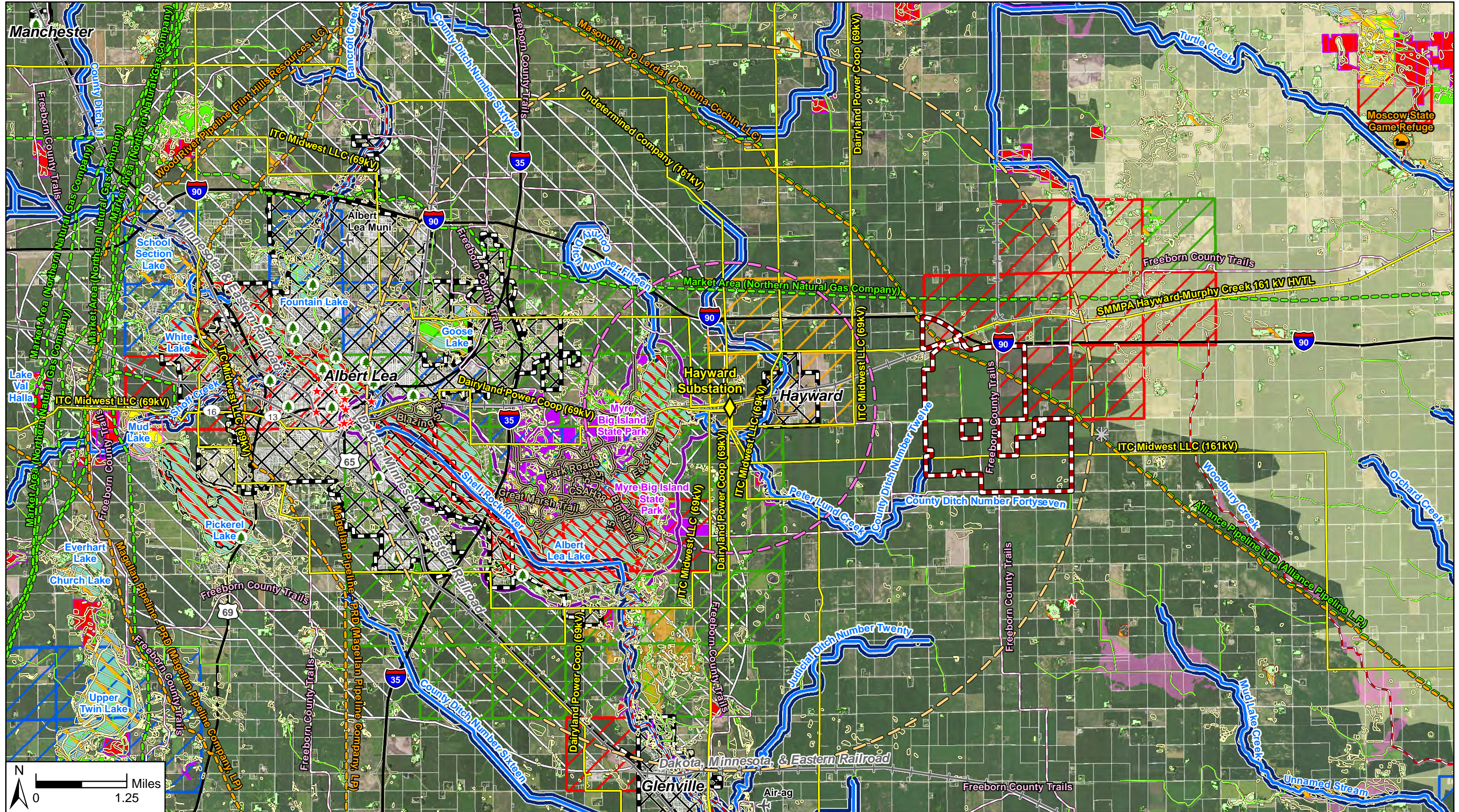
- Prime Farmland Classifications**
- All areas are prime farmland 9,102.36 Acres (18.11%)
  - Farmland of statewide importance 3,252.80 Acres (6.47%)
  - Prime farmland if drained 19,054.74 Acres (37.91%)

- Prime farmland if protected from flooding or not frequently flooded during the growing season 677.30 Acres (1.35%)
- Not prime farmland 18,177.65 Acres (36.16%)

**Hayward Solar Project**  
Freeborn County, Minnesota

**Wilmarth Evaluation Sites Prime Farmland & Charter Cities**





Map Document: N:\00265999\_00\GIS\Prime Farmland Exhibit\Hayward\_PrimeFarmland\_210427.mxd, 4/27/2021, 4:41:01 PM radevito

**Westwood**  
Toll Free (888) 937-5150 westwoodps.com  
Westwood Professional Services, Inc.

**Legend**

- Hayward Substation
- 2-Mile Search Buffer
- 5-Mile Search Buffer
- Project Area
- 2-Mile Charter City Buffer
- Municipal Boundary
- Major Road
- Existing Transmission Line
- Existing Natural Gas Pipeline
- Existing Crude Oil Pipeline
- State Trail/Road
- Snowmobile Trail
- Railroad
- Parcel Boundary
- Natural Gas Compressor Station
- Airport
- Moscow State Game Refuge
- Municipal Park
- Nationally Registered Historical Place
- Native Plant Community
- MBS Site of Biodiversity Significance
- National Conservation Easement
- Minnesota Wildlife Management Area
- Woodland Area
- NWI Wetland
- 300ft Public Watercourse Shoreland Area
- 1,000ft Lake Shoreland Area
- 100-Year FEMA Floodplain
- Rusty Patched Bumble Bee High Potential Zone
- Rusty Patched Bumble Bee Low Potential Zone
- Impaired Stream
- PWI Watercourse
- NHD Flowline
- Impaired Lake
- PWI Basin
- NHD Waterbody
- Myre-Big Island State Park
- Conservation Easement
- Private Conservation Area
- Resource Management Area
- State Conservation Area
- Active Mining Area
- NHIS Rare/Endangered Species PLS Section Areas
- Invertebrate Animal
- Vascular Plant
- Animal Assemblage
- Vertebrate Animal

# Hayward Solar Project

Freeborn County, Minnesota

## Hayward Substation Constraints Map

EXHIBIT 13