

# **Appendix C**

## **Agency Correspondence**

## **Representative Project Introduction Letters**

**§ 216E.03, subd. 3a**

**Xcel Energy – December 14, 2020**

**NG Renewables – December 16, 2020**



414 Nicollet Mall  
Minneapolis, MN 55401

December 8, 2020

Nancy Riddle  
Sherburne County Planning & Zoning Administrator  
13880 Business Center Drive NW Suite 100  
Elk River, MN 55330

RE: Notice of Availability for Meeting per Minn. Stat. § 216E.03, subd. 3a for a Planned Application to the Minnesota Public Utilities Commission for a Solar Facility and 345 kV Transmission Line in Sherburne County, Minnesota

Dear Ms. Riddle,

Northern States Power Company, a Minnesota Corporation, d/b/a Xcel Energy ("Xcel Energy"), is proposing to construct a new up to 250 megawatt ("MW") Sherco Solar One solar electric generation system and associated facilities ("Solar Facility") near the City of Becker and an approximately 3 mile new 345 kilovolt ("kV") transmission tie line ("Transmission Line") to interconnect the plant to the transmission system, in Sherburne County, Minnesota.

The enclosed map shows the location of the proposed Solar Facility and Transmission Line corridor. The Solar Facility will cover approximately 1600 acres and is located west of Highway 10 and north and south of 137<sup>th</sup> St. SE in Becker Township. The Transmission Line will be a 345 kV line, approximately 3 miles in length, extending north and west from the collector substation to the existing Sherco Substation within the city of Becker, where it will connect to the existing regional transmission system.

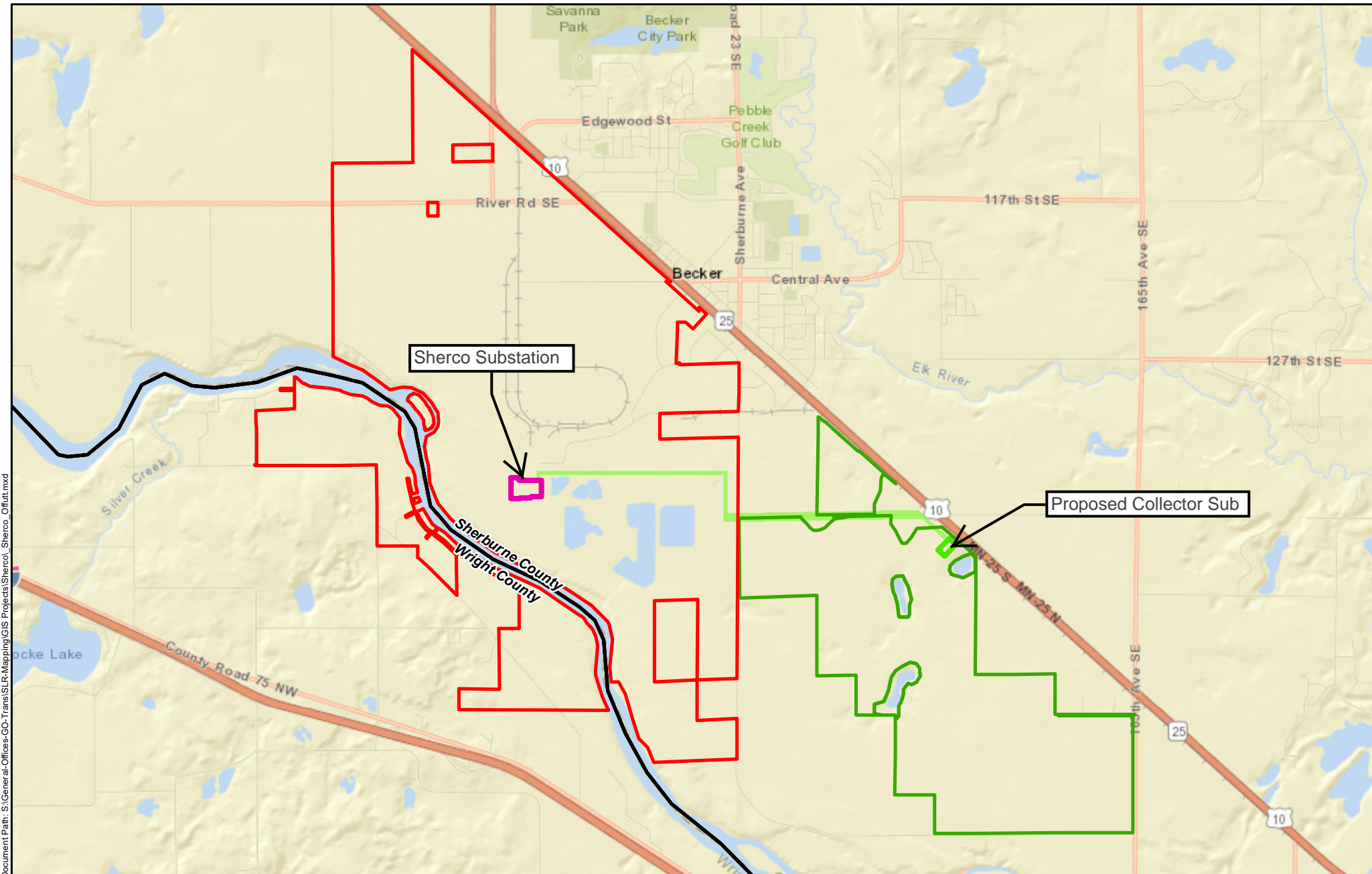
The Minnesota Public Utilities Commission ("PUC") must approve the proposed project before it can be constructed. Multiple stakeholder and public input proceedings will be included in the permitting process. Xcel Energy is actively compiling information in support of the application for approval of the Solar Facility and preparing to file an application to the PUC in early 2021. If you would like to request a consultation meeting regarding the proposed Solar Facility or Transmission Line, or have any questions about the project, please contact me at 612-330-6073 or by email at [Ellen.L.Heine@xcelenergy.com](mailto:Ellen.L.Heine@xcelenergy.com).

Sincerely,

A handwritten signature in blue ink that reads 'Ellen Heine'.

Ellen Heine  
Sr. Siting and Permitting Agent  
Xcel Energy

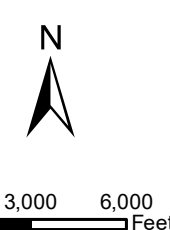
Document Path: S:\General-Offices-GO-Trans\SLR-Mapping\GIS Projects\Sherco\Sherco\_OI\utl.mxd



# Proposed Sherco Solar One Facility

Sherburne County, MN

- Legend**
- |  |                     |  |                            |
|--|---------------------|--|----------------------------|
|  | Collector Sub       |  | Sherco NSP Property        |
|  | Transmission Route  |  | Sherco Solar One Footprint |
|  | Existing Substation |  | County Boundary            |



DISCLAIMER: This information is believed to be correct but is subject to change and is not warranted.

Date: 12/7/2020



December 14, 2020

Nancy Riddle  
Sherburne County Planning & Zoning Administrator  
13880 Business Center Drive NW Suite 100  
Elk River, MN 55330



SENT VIA EMAIL: [zoning@co.sherburne.mn.us](mailto:zoning@co.sherburne.mn.us)

RE: Sherco Solar, LLC- Notice of Availability for Meeting for the Sherco Solar Project and 345 kV Transmission Line in per Minn. Stat. § 216E.03, subd. 3a for a Planned Application to the Minnesota Public Utilities Commission

Dear Ms Riddle,

Sherco Solar, LLC ("Sherco Solar"), a wholly owned subsidiary of National Grid Renewables Development, LLC is proposing to construct an up to 370 MW megawatt ("MW") solar electric generation facility primarily sited in Clear Lake Township, Sherburne County, Minnesota (Project). The Project will interconnect to the regional transmission system via an approximately 4-mile, 345 kilovolt ("kV") transmission tie line (Transmission Line) to the Sherco Substation within the Sherco Coal Generation Station which is separately owned and operated by Xcel Energy in the city of Becker, Minnesota.

Enclosed is a map of Sherco Solar's location, associated Project boundary, and anticipated Transmission Line route. The Solar Facility will encompass approximately 2,600 acres and is located south and east of Clear Lake, and west of the city of Becker. The Transmission Line will be a 345 kV line, approximately 4 miles in length, extending south and east from the Project's collector substation in Clear Lake Township through portions of Becker Township into the existing Sherco Substation in the city of Becker.

The Minnesota Public Utilities Commission ("PUC") must approve the proposed project before it can be constructed. Multiple stakeholder and public input proceedings will be included during the permitting process. Sherco Solar is actively compiling information in support of the application for approval of the Project and preparing to file applications to the PUC in early 2021. If you would like to request a consultation meeting regarding the proposed Solar Facility or Transmission Line, or have any questions about the project, please contact me at 952.300.9476 or by email at [wrisse@nationalgridrenewables.com](mailto:wrisse@nationalgridrenewables.com).

Sincerely,

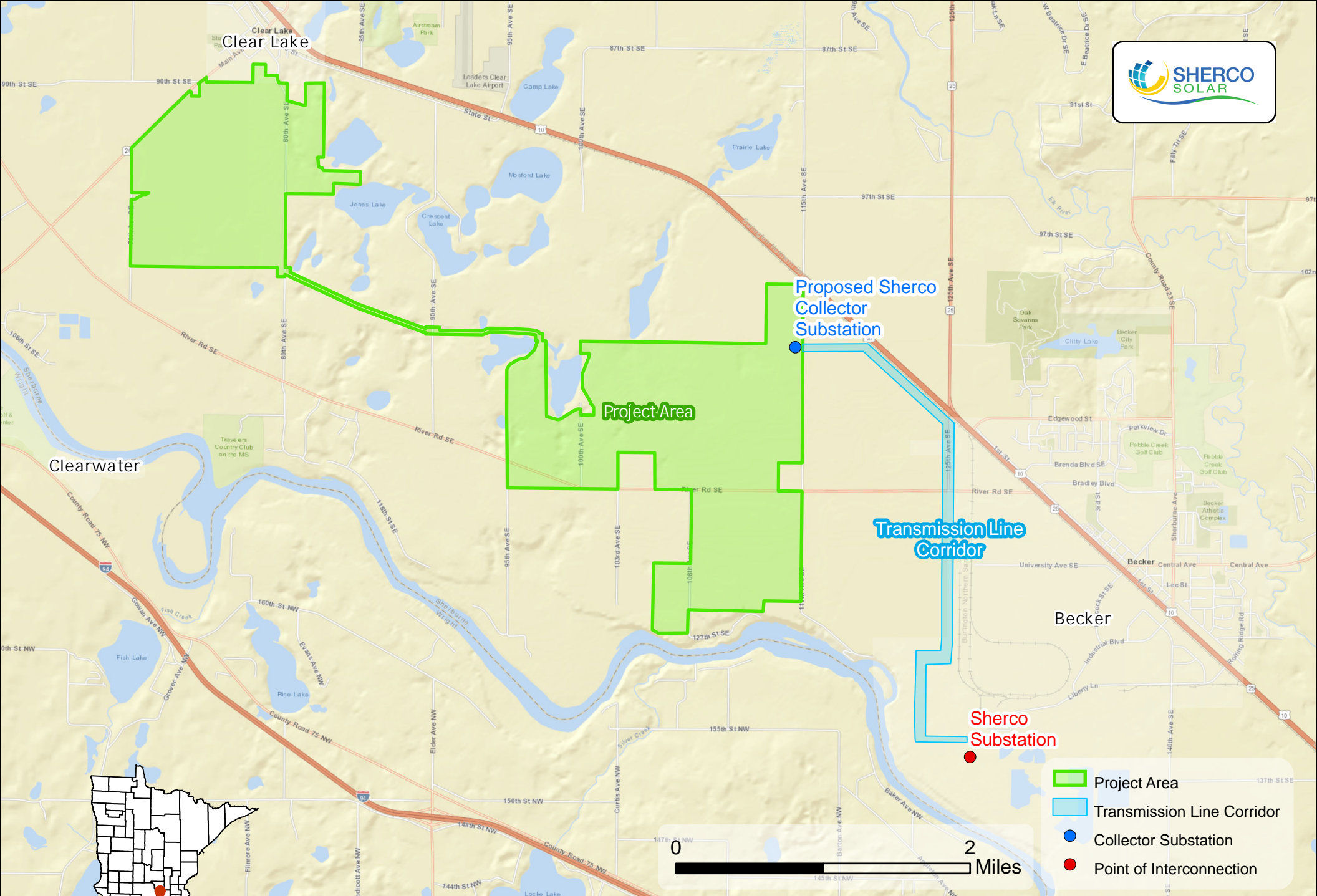
A handwritten signature in dark ink, appearing to read "William Risse", with a long horizontal flourish extending to the right.

William Risse  
Permitting Specialist  
National Grid Renewables  
8400 Normandale Lake Boulevard Suite 1200  
Bloomington, MN 55437

Enclosure:  
Sherco Location Map

8400 NORMANDALE LAKE BLVD, SUITE 1200, BLOOMINGTON, MN 55437  
952.988.9000 | [WWW.NATIONALGRIDRENEWABLES.COM](http://WWW.NATIONALGRIDRENEWABLES.COM)





# Sherco Solar

## Sherburne County, Minnesota

# **Representative Project Introduction Letters**

**Federal, State, and Local Agencies**

**January 15, 2021**

January 15, 2021

Melissa Collins  
Regional Environmental Assessment Ecologist MN DNR  
1200 Warner Road  
St. Paul MN 55106



SENT VIA EMAIL: melissa.collins@state.mn.us

RE: Requesting Comments on Sherco Solar in Sherburne County, Minnesota

Dear Ms. Collins,

Sherco Solar, LLC ("Sherco Solar"), a wholly owned subsidiary of National Grid Renewables Development, LLC ("NG Renewables") is gathering information and requesting agency comments for a proposed utility-scale solar-energy project in Sherburne County, Minnesota (Project). Sherco Solar, in collaboration with Xcel Energy, will submit an application to the Minnesota Public Utilities Commission ("PUC") for up to 600 MW of nameplate solar-energy capacity. Following permitting and development of the Project by NG Renewables, the Project is anticipated to be transferred, constructed, owned, and operated by Xcel Energy.

The Project's permanent facilities may include:

- Solar modules, inverters, and racking;
- Fencing;
- Access roads as required;
- Two collection substation facilities;
- Two 345 kilovolt (kV) gen-tie lines;
- On-site below-ground and above-ground electrical collection lines; and
- Weather stations (up to 20 feet tall).

The Project encompasses agricultural lands both east and west of the existing Sherco Coal Generation Station. Due to the unique layout of the site, Sherco Solar will interconnect to the electric grid via two separate 345 kV gen-tie lines to the existing substation within the existing Sherco Coal Generation Station footprint. Neither gen-tie line is anticipated to exceed 5 miles in length.

To facilitate your review, we have enclosed a map of Sherco Solar's location, associated project boundary, and the potential routing areas for each gen-tie line. The exact alignment of the gen-tie lines have not yet been finalized, but are anticipated to be wholly contained within the potential routing areas. Sherco Solar continues to collect information to inform Project design. The racking layout, access roads, and electrical connections have not been finalized. Land cover within the Project area is predominantly agricultural with a mix of hay/pasture, row crops, and center-pivot-irrigated farmland, and the Project area does not contain any soils classified as prime farmland. The Project area is located within the following township, range, and sections.

(Continued on Page 2)




	Township	Range	Section
<b>Solar Project</b>	33N	28W	5, 7, 8, 16, 17
	34N	29W	18, 19, 20, 21, 22, 26, 27, 28, 34
	34N	30W	13, 24
<b>West Gen-Tie Line Route Width</b>	33N	29W	1, 2
	34N	29W	22, 25, 26, 27, 35, 36
<b>East Gen-Tie Line Route Width</b>	33W	28W	6, 7
	33W	29W	1

Upon receipt of applicable permits and permissions, Sherco Solar anticipates construction commencing as early as possible in 2022 and commencement of commercial operation by the end of 2023.

The purpose of this letter is to inform your organization of the proposed Project, seek your input regarding any permits and approvals that may be required, and identify interests your organization may have in the Project site or associated study area. We welcome any comments your agency may have at this time and throughout the permit application process. Any written agency comments provided in response to this letter will be incorporated into the PUC's review process.

If you require further information or have questions regarding this matter, please contact me at 952-300-9476 or at [wrisse@nationalgridrenewables.com](mailto:wrisse@nationalgridrenewables.com).

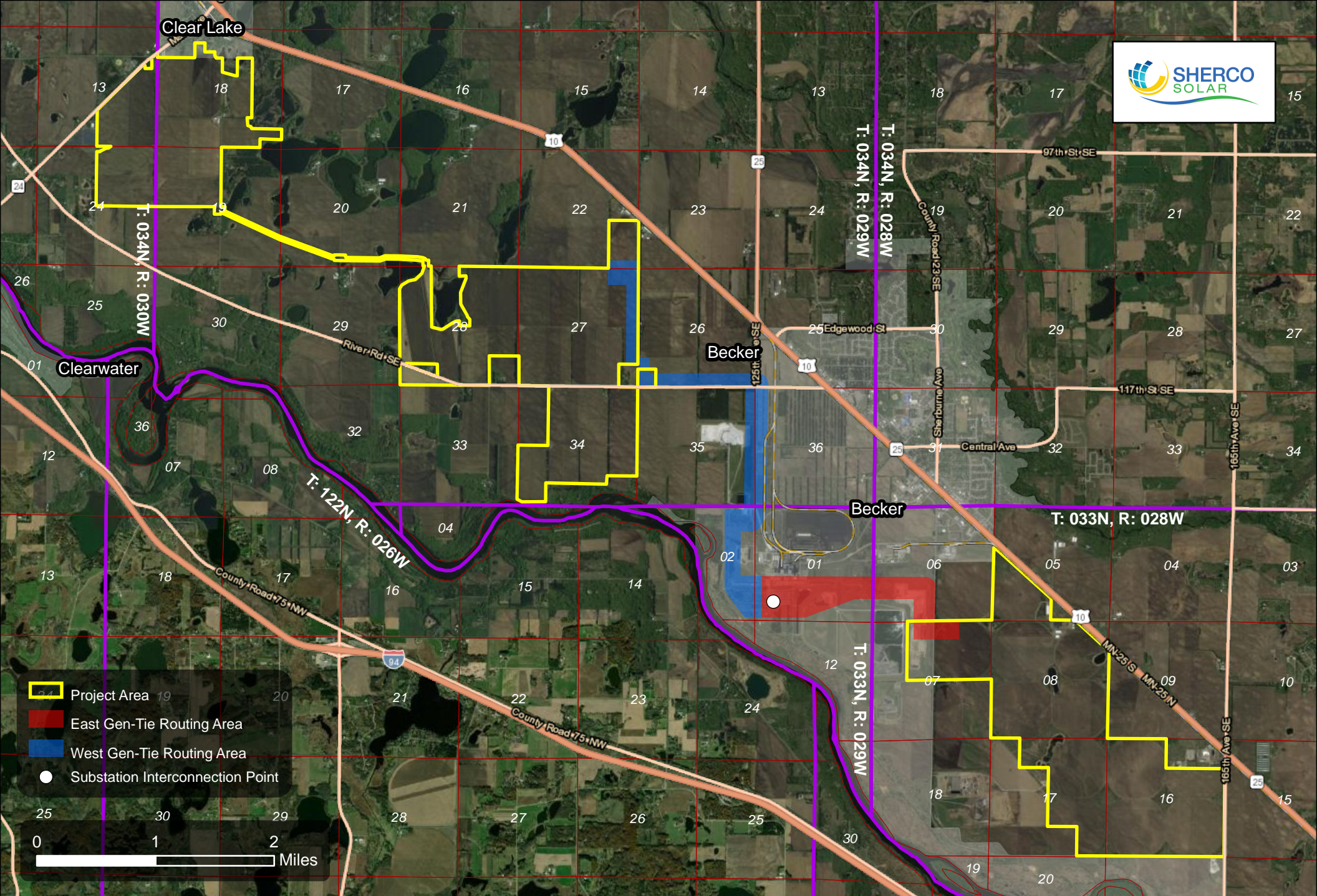
Sincerely,



William Risse  
Permitting Specialist  
National Grid Renewables  
8400 Normandale Lake Boulevard Suite 1200  
Bloomington, MN 55437

Enclosure:  
Sherco Location Map





Project Area

East Gen-Tie Routing Area

West Gen-Tie Routing Area

Substation Interconnection Point

0

1

2

Miles

# Sherco Solar

## Sherburne County, Minnesota

# **Representative Project Introduction Letters**

**Tribal Representatives**

**March 4, 2021**





March 3, 2021

Jaylen Strong  
Bois Forte Tribal Historic Preservation Officer

SENT VIA EMAIL: [jaylen.strong@boisforte-nsn.gov](mailto:jaylen.strong@boisforte-nsn.gov)

RE: Requesting Comments on Sherco Solar in Sherburne County, Minnesota

Dear Mr. Strong,

Northern States Power Company (Xcel Energy) is gathering information and requesting comments for a proposed utility-scale solar-energy project in Sherburne County, Minnesota (Project). Xcel Energy will submit an application to the Minnesota Public Utilities Commission ("PUC") for up to 460 MW of nameplate solar-energy capacity. The purpose of this letter is to inform your community of the proposed Project, seek your input regarding the project, and identify interests your community may have in the Project site or associated study area. We welcome any comments you may have at this time and throughout the permit application process.

The Project's permanent facilities may include:

- Solar modules, inverters, and racking;
- Fencing;
- Access roads as required;
- Two collection substation facilities;
- Two 345 kilovolt (kV) gen-tie lines;
- On-site below-ground and above-ground electrical collection lines; and
- Weather stations (up to 20 feet tall).

The Project encompasses agricultural lands both east and west of the existing Sherco Coal Generation Station. Due to the unique layout of the site, the Project will interconnect to the electric grid via two separate 345 kV gen-tie lines to the existing substation within the existing Sherco Coal Generation Station footprint. Neither gen-tie line is anticipated to exceed 5 miles in length.

To facilitate your review, we have enclosed a map of the Project's location, associated project boundary, and the potential routing areas for each gen-tie line. The exact alignments of the gen-tie lines have not yet been finalized, but are anticipated to be wholly contained within the potential routing areas. Xcel Energy continues to collect information to inform Project design. The racking layout, access roads, and electrical connections have not been finalized. Land cover within the Project area is predominantly agricultural with a mix of hay/pasture, row crops, and center-pivot-irrigated farmland, and the Project area does not contain any soils classified as prime farmland.

A Phase 1 Cultural Resource Survey has been completed for approximately ninety eight percent of the Project area to date. All work including background studies and pedestrian surveys was conducted in accordance with *Minnesota SHPO Manual for Archaeological Survey Projects*, and the Secretary of the Interior's *Standards and Guidelines for Archeology and Historic Preservation*. For the Project area that



has been surveyed to date, no culturally significant resources have been identified. The remaining two percent of the project will be surveyed once suitable conditions occur in the spring of 2021.

Upon receipt of applicable permits and permissions, Xcel Energy anticipates construction commencing as early as possible in 2022 and commencement of commercial operation by the end of 2023.

We welcome your feedback regarding the proposed Project. If you require further information or have questions regarding this matter, I will be serving as a representative on behalf of Xcel Energy throughout permitting and development of the Project, and please contact me at 952-300-9476 or at [wrisse@nationalgridrenewables.com](mailto:wrisse@nationalgridrenewables.com).

Sincerely,

A handwritten signature in black ink that reads "William Risse".

*William Risse*  
*Permitting Specialist*  
*National Grid Renewables*  
*8400 Normandale Lake Boulevard Suite 1200*  
*Bloomington, MN 55437*

*Enclosure:*  
*Project Location Map*